



## Queens Avenue, N10

£475,000

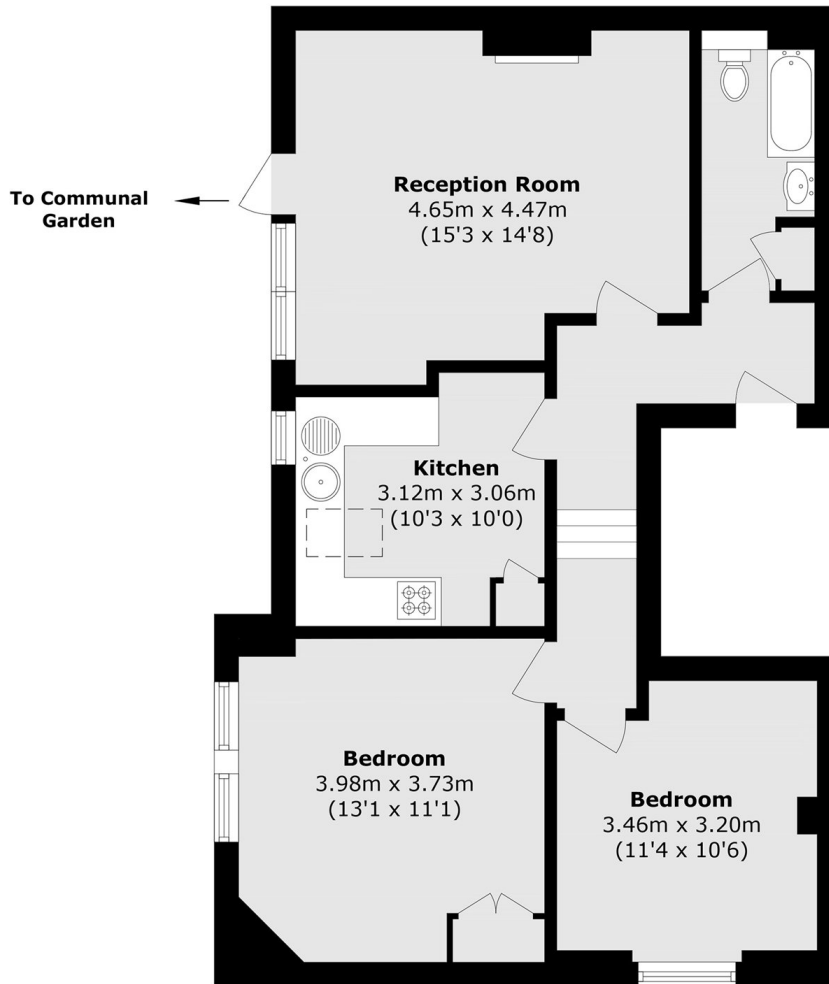
Offered on a chain free basis, this charming two double bedroom flat offers share of freehold and has direct access onto an extensive communal garden. Set at the back of the building, the flat has views over mature trees and greenery, as well as providing a comfortable living space through its separate kitchen living room.

Queens Avenue is one of the most central and sought after roads in Muswell Hill, metres from the Broadway with places to eat, shop, and drink. Bus links to Finsbury Park, Highgate, and Hornsey provide quick access into the City, while the open green spaces of Highgate Woods and Alexandra Palace are all within one mile.

### Features

- Chain Free
- Share of Freehold
- Period Features
- Communal Garden
- Two Double-Bedrooms
- Charming Views

# Queens Avenue, London, N10



Total area (approx.): 68.5 sq. m (737.3 sq. ft)