



## APARTMENT 15, MASTER WILLIAMS PLACE FOLKESTONE, CT20 1FF

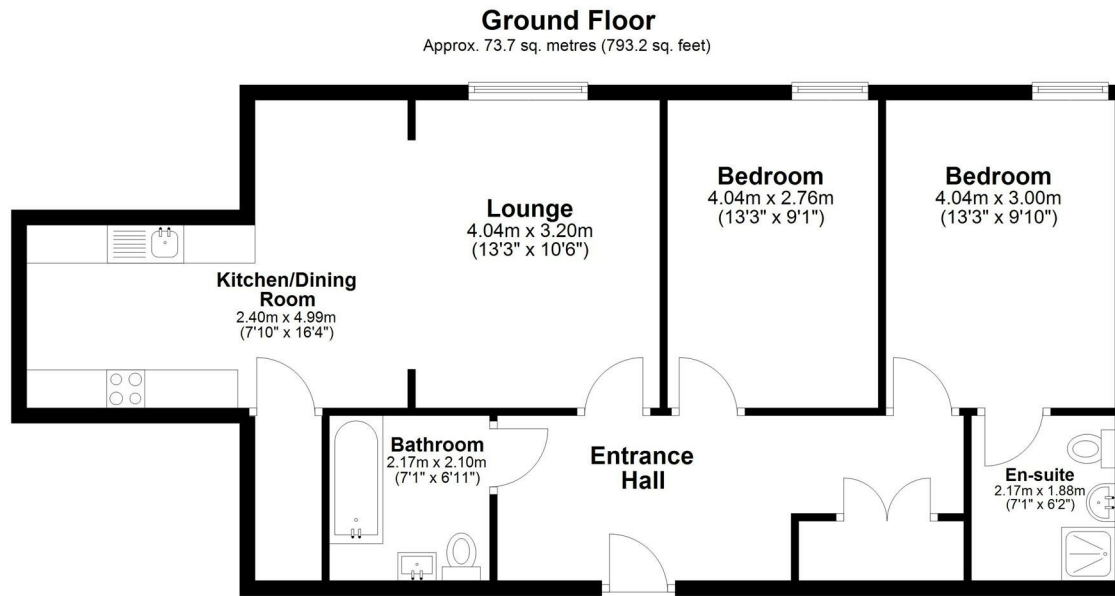
**£1,325 PER MONTH**

Welcome to this stunning new build apartment located in the charming town of Folkestone. Completed in 2022, this modern residence spans an impressive 793 square feet, offering a spacious and inviting living environment that is perfect for contemporary lifestyles.

The apartment boasts a well-thought-out layout, featuring a welcoming reception room that flows seamlessly into two generously sized bedrooms and two stylish bathrooms. This arrangement is ideal for individuals, couples, or small families who value both comfort and convenience in their home.

One of the standout features of this property is its high energy efficiency, which not only contributes to a reduced carbon footprint but also ensures low running costs, making it an economical choice for modern living. The sleek German kitchen serves as a focal point of the apartment, showcasing solid stone worktops and integrated appliances that blend functionality with elegance. With built in

**WEST END  
ESTATES**  
LETTINGS AND PROPERTY MANAGEMENT



Total area: approx. 73.7 sq. metres (793.2 sq. feet)

Whilst every attempt has been made to ensure the accuracy of the floorplan contained here, measurements of doors, windows, rooms and any other items are approximate and no responsibility is taken for any error, omission or misstatement. This plan is for lustrative purposes only and should be used as such by any prospective purchaser. The services, systems and appliances shown have not been tested and no guarantee as to their operability or efficiency can be given.

Plan produced using PlanUp.



Energy Efficiency Rating		
	Current	Potential
Very energy efficient - lower running costs		
(92 plus) <b>A</b>		
(81-91) <b>B</b>	<b>83</b>	
(69-80) <b>C</b>		
(55-68) <b>D</b>		
(39-54) <b>E</b>		
(21-38) <b>F</b>		
(1-20) <b>G</b>		
Not energy efficient - higher running costs		
<b>England &amp; Wales</b>	EU Directive 2002/91/EC	

**EPC Rating: B    Council Tax Band: B**

Agents Note: Whilst every care has been taken to prepare these particulars, they are for guidance purposes only. All measurements are approximate and are for general guidance purposes only and whilst every care has been taken to ensure their accuracy, they should not be relied upon and potential buyers/tenants are advised to recheck the measurements

West End Estates Folkestone  
7 Sapper Row  
Folkestone  
Kent  
CT20 3WT

01303 478777  
office@westend-estates.co.uk

**WEST END  
ESTATES**  
LETTINGS AND PROPERTY MANAGEMENT