



4 Thompson Street, WA10

Asking Price £160,000



Welcome to this charming mid-terrace house located on Thompson Street in St. Helens. This delightful property offers a perfect blend of comfort and convenience, making it an ideal choice for families or professionals alike.

As you enter, you will find a spacious reception room that invites you to relax and unwind. The house boasts an additional reception room, providing ample space for entertaining guests or creating a cosy family area. The well-appointed kitchen features integrated appliances, ensuring that meal preparation is both efficient and enjoyable.

Upstairs, you will discover three generously sized bedrooms, each offering a peaceful retreat for rest and relaxation. A convenient storage cupboard off the landing adds to the practicality of the home, allowing for easy organisation of belongings. The bathroom is fitted with a modern white suite, providing a clean and fresh space for your daily routines.

The property is situated in a prime location, just a short walk from Thatto Heath Train Station, making commuting a breeze. Additionally, you will find a variety of shops and schools nearby, catering to all your daily needs. For those who enjoy the outdoors, lovely walks in popular parks are also within easy reach, perfect for leisurely strolls or family outings.

The low-maintenance front & rear garden adds to the appeal of this home, allowing you to spend more time enjoying your surroundings rather than tending to upkeep.

In summary, this spacious mid-terrace house on Thompson Street is a wonderful opportunity for anyone seeking a comfortable and conveniently located home in St. Helens. Don't miss your chance to make it your own!









STAPLETON
DERBY

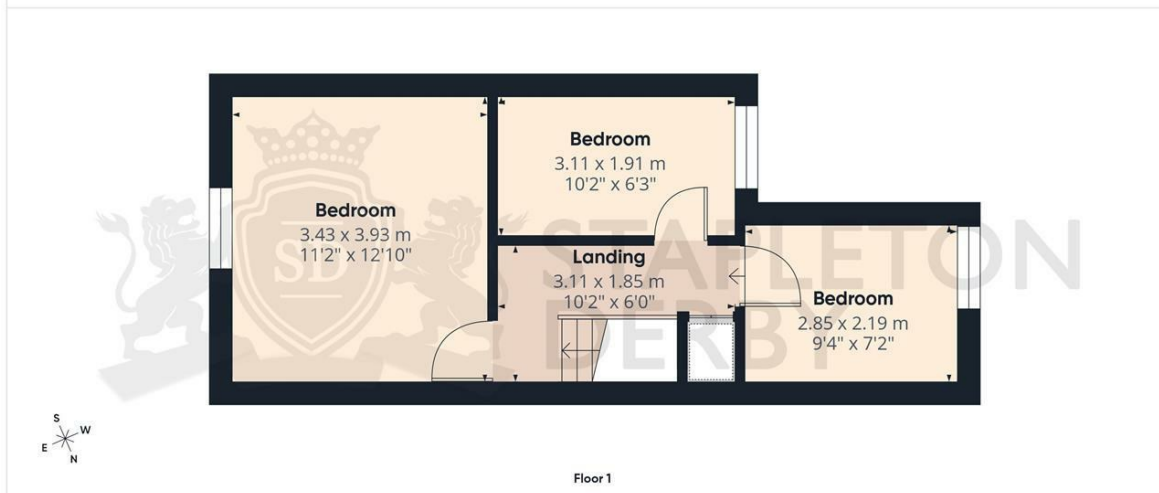
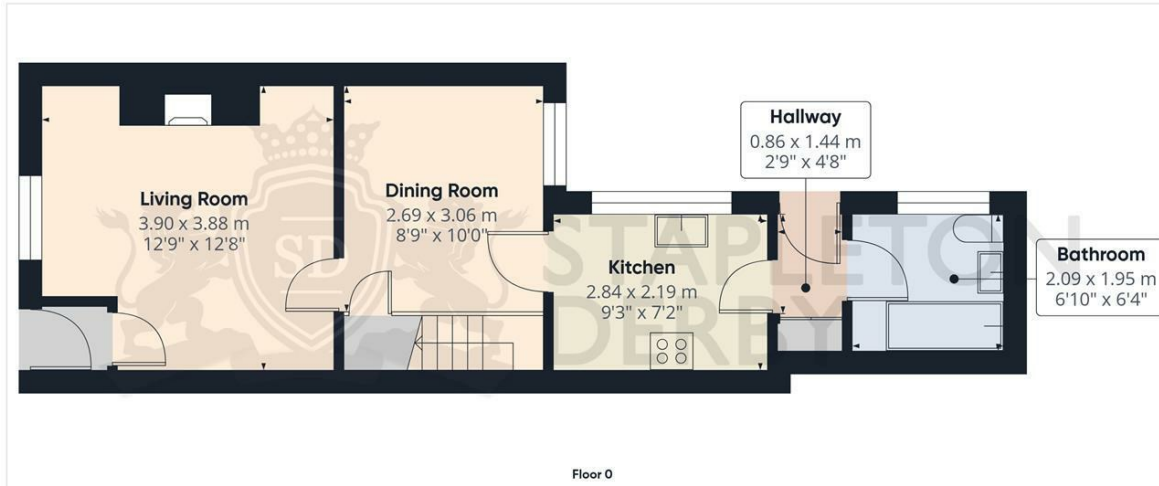
Stapleton Derby

73-75 Corporation Street, St Helens, WA10 1SX

Tel: 0151 430 0717 01744 883 322

info@stapletonderby.co.uk

www.stapletonderby.co.uk

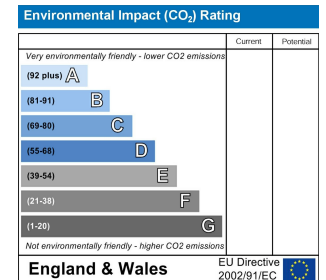
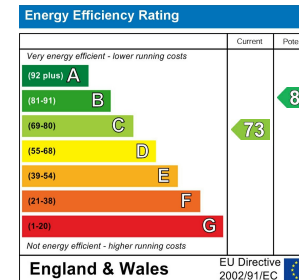


Approximate total area[®]
66.5 m²
716 ft²

(1) Excluding balconies and terraces

Calculations reference the RICS IPMS 3C standard. Measurements are approximate and not to scale. This floor plan is intended for illustration only.

GIRAFFE360



IMPORTANT NOTICE TO PURCHASERS

We endeavor to make our sales particulars accurate and reliable, however, they do not constitute or form part of an offer or any contract and none is to be relied upon as statements of representation or fact. Any services, systems and appliances listed in this specification have not been tested by us and no guarantee as to their operating ability or efficiency is given. All measurements have been taken as a guide to prospective buyers only, and are not precise. If you require clarification or further information on any points please contact us. Fixtures and fittings other than those mentioned are to be agreed with the seller.