



Connells

Logan Close
Wolverhampton



Property Description

Connells Wolverhampton have the delight to bring to the market this attractive and chain free one bedroom mews style house. Benefiting from no onward chain this property should be viewed in order to appreciate.

The property comprises of a large lounge, modern fitted kitchen, modern fitted bathroom, generous bedroom, fitted wardrobe, off road parking to front, generous lawned rear garden.

Location And Area

Situated just off the main Stafford Road this home is situated in a cul-de-sac location offering fantastic commuting access to the M6 and M54 motorways along with access to Wolverhampton City Centre. Nearby is also the popular Dunstall Park Racecourse.

Lounge

11' 5" x 14' 3" (3.48m x 4.34m)

Double glazed window to front, radiator, electric fire, tv areal point, up and down feature lighting, door to kitchen.



Kitchen

8' 7" x 8' 1" (2.62m x 2.46m)

Range of stylish wall and base units with a double glazed window to rear, double glazed door to rear, integrated oven, hob and extractor, plumbing for washing machine, door to lounge, boiler, door to bathroom.

Bathroom

P-shaped panelled bath, electric shower over, double glazed window to rear, spotlights, pedestal sink, low flush toilet, tiled walls and floor, door to kitchen.

Bedroom

14' 9" x 9' 7" (4.50m x 2.92m)

Double glazed window to rear, fitted wardrobe, staircase, up and over down lights.

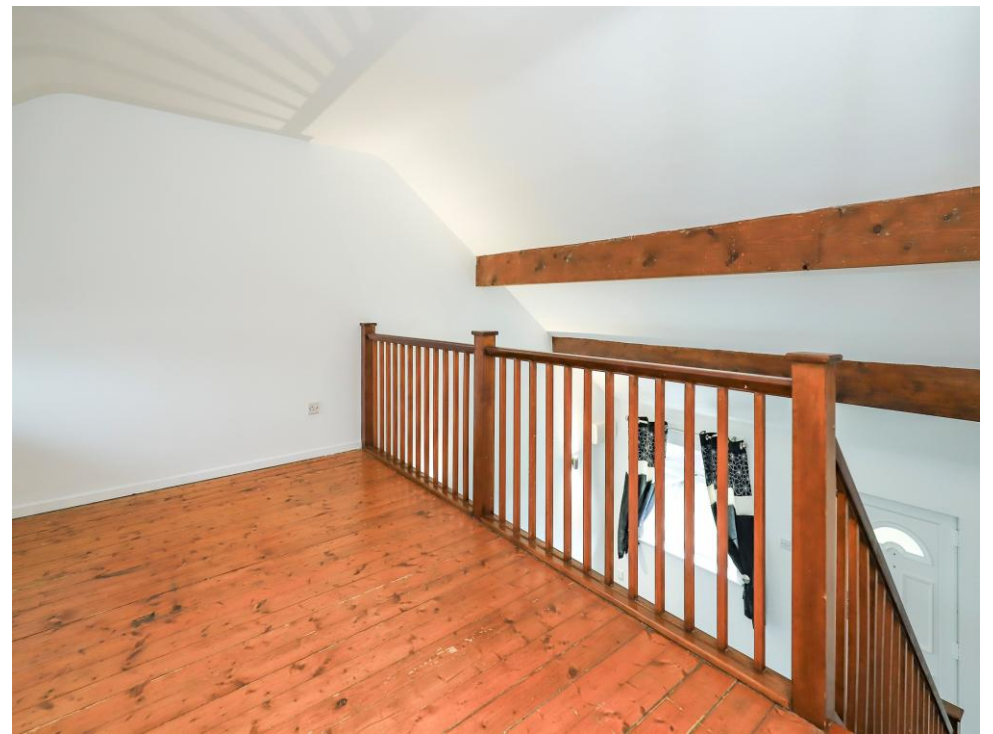
Outside Front

Parking area.

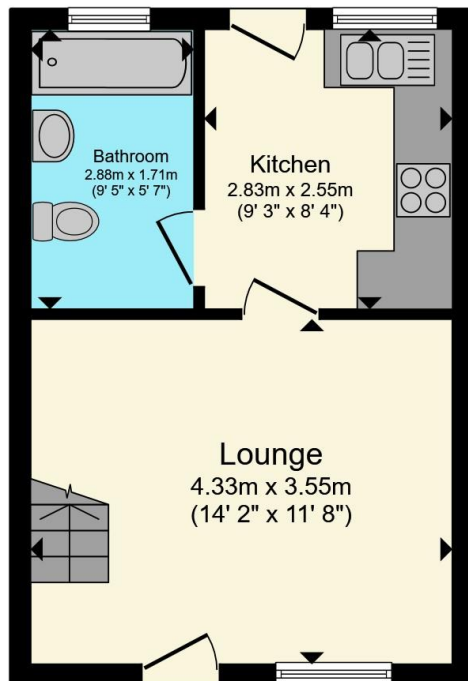
Outside Rear

Good sized enclosed rear garden which is mostly lawned surrounded by a range of fencing.

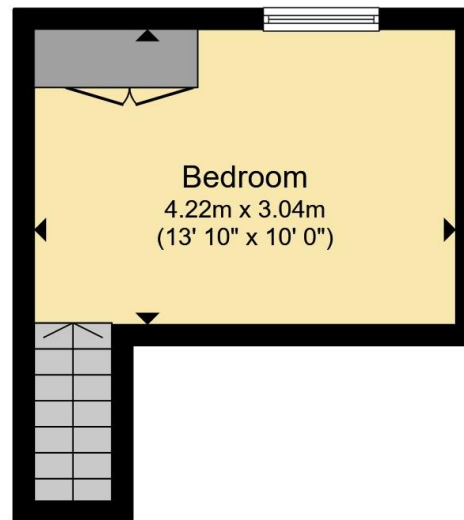








Ground Floor



First Floor

Total floor area 42.9 m² (462 sq.ft.) approx

This floor plan is for illustrative purposes only. It is not drawn to scale. Any measurements, floor areas (including any total floor area), openings and orientation are approximate. No details are guaranteed, they cannot be relied upon for any purpose and they do not form part of any agreement. No liability is taken for any error, omission or misstatement. A party must rely upon its own inspection(s). Powered by www.propertybox.io



To view this property please contact Connells on

T 01902 710 170
E wolverhampton@connells.co.uk

81-83 Darlington Street
 WOLVERHAMPTON WV1 4EX

EPC Rating: D Council Tax
 Band: A

Tenure: Freehold

view this property online connells.co.uk/Property/WVH334556



1. MONEY LAUNDERING REGULATIONS Intending purchasers will be asked to produce identification documentation at a later stage and we would ask for your co-operation in order that there will be no delay in agreeing the sale. 2. These particulars do not constitute part or all of an offer or contract. 3. The measurements indicated are supplied for guidance only and as such must be considered incorrect. Potential buyers are advised to recheck measurements before committing to any expense. 4. We have not tested any apparatus, equipment, fixtures, fittings or services and it is in the buyers interest to check the working condition of any appliances.

Connells Residential is registered in England and Wales under company number 1489613, Registered Office is Cumbria House, 16-20 Hockliffe Street, Leighton Buzzard, Bedfordshire, LU7 1GN. VAT Registration Number is 500 2481 05.

See all our properties at www.connells.co.uk | www.rightmove.co.uk | www.zoopla.co.uk

Property Ref: WVH334556 - 0005