

ST ANDREW'S MEADOW

• BACTON •



Computer generated image

3 bedroom detached house

Plots 4, 26, 44*

GROUND FLOOR

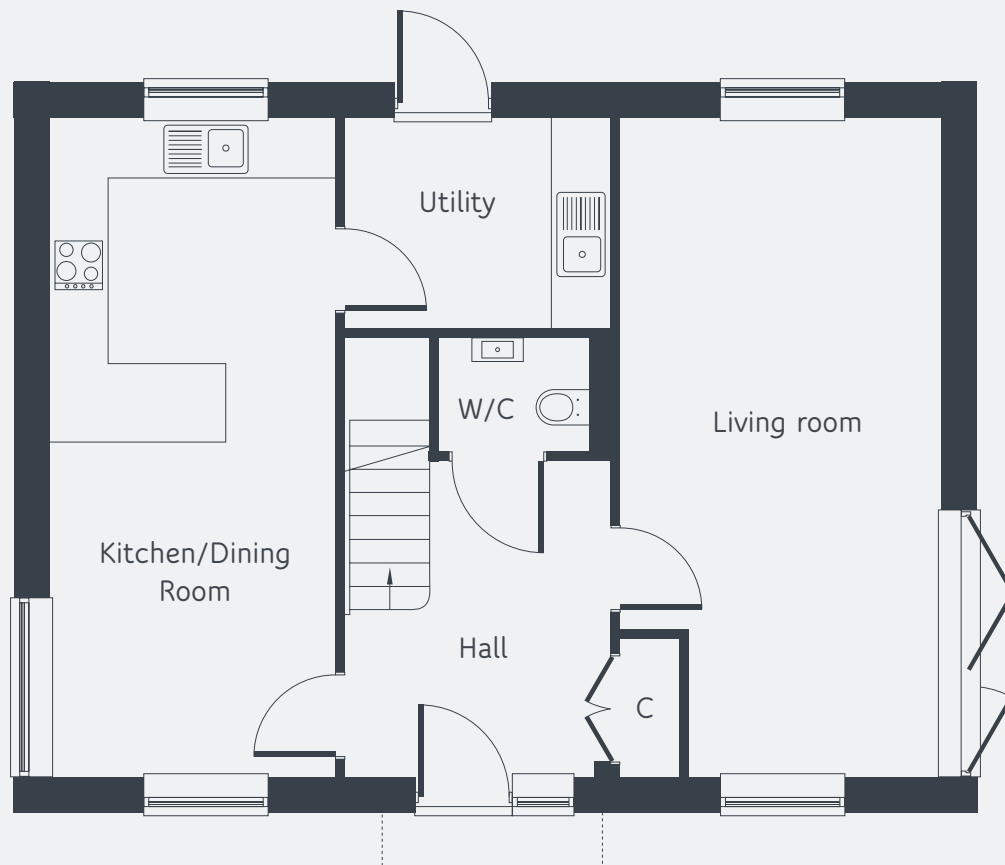
Kitchen/Dining	6.79m x 2.97m	22'3" x 9'9"
Living Room	6.79m x 3.30m	22'3" x 10'10"

FIRST FLOOR

Bedroom 1	3.74m x 2.99m	12'3" x 9'10"
Bedroom 2	3.45m x 3.20m	11'4" x 10'6"
Bedroom 3	3.93m x 3.26m	12'11" x 10'8"

ST ANDREW'S MEADOW

• BACTON •



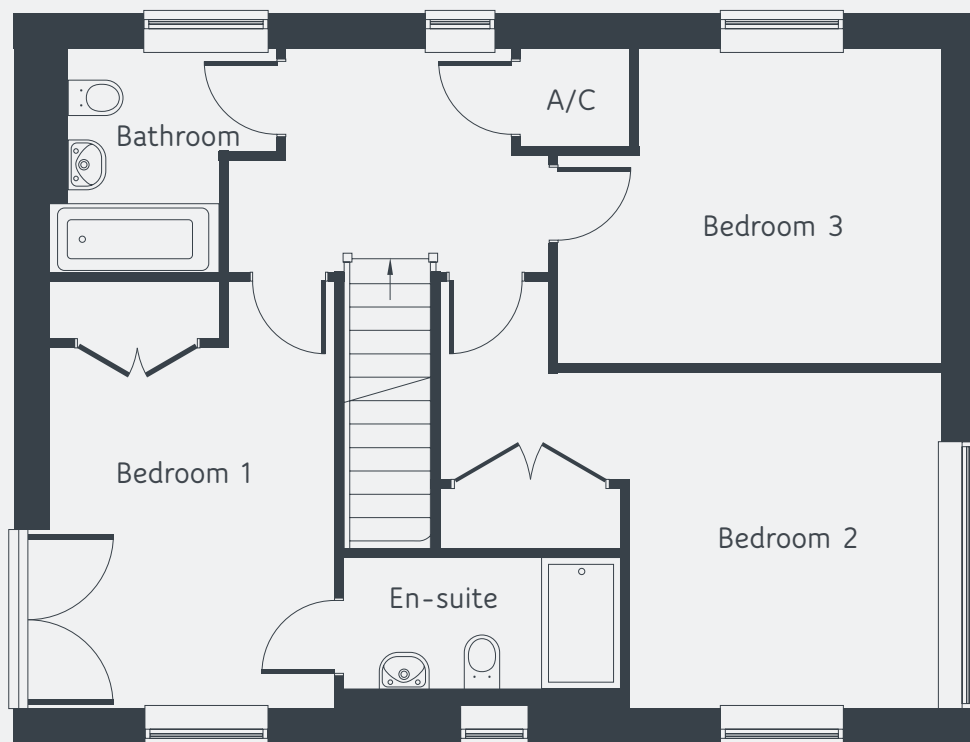
GROUND FLOOR

Total floor space: 1280 sq ft / 119 sq m

*Plot 44 is handed. Floor plans and computer generated images are indicative only and external finished may vary. Dimensions shown may vary within a tolerance of +/- 50mm and are not intended to be used for carpet sizes, appliance sizes or items of furniture. Floor plans are not shown to scale.

ST ANDREW'S MEADOW

• BACTON •



FIRST FLOOR

Total floor space: 1280 sq ft / 119 sq m

*Plot 44 is handed. Floor plans and computer generated images are indicative only and external finished may vary. Dimensions shown may vary within a tolerance of +/- 50mm and are not intended to be used for carpet sizes, appliance sizes or items of furniture. Floor plans are not shown to scale.