



PROSPECT WAY, SW11

£2,500,000

A well presented three bedroom apartment in Battersea Power Station. Spread over 1,473 square foot this apartment consists of three double bedrooms, two of which benefit from en suites and an additional family bathroom, a large open plan kitchen and reception room with access to winter balcony. The apartment also comes with private allocated parking.

- Battersea Power Station
- Private Parking
- 9th Floor
- 1473 Square Foot
- 24 Hour Concierge
- High End Residents Facilities



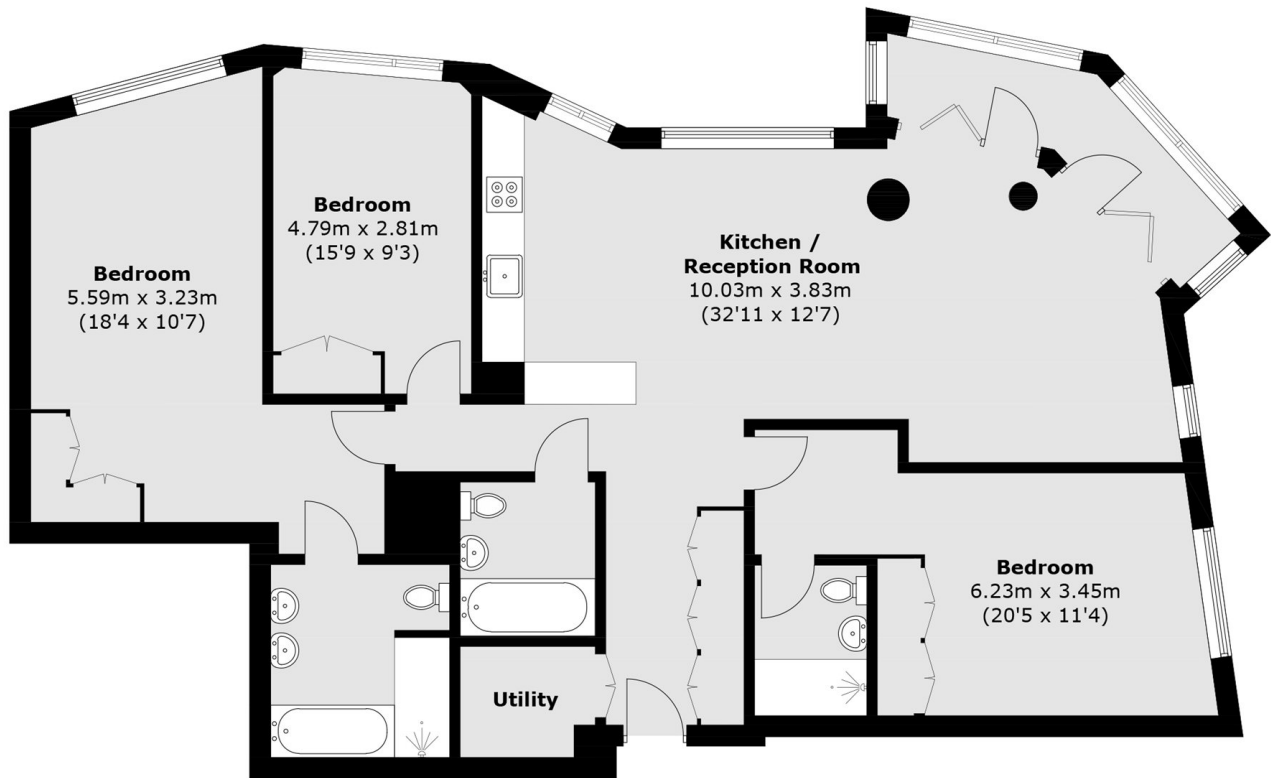
ABOUT THE HOME

Residents of Battersea Power Station can enjoy to of the range facilities including a residents lounge and bar, private dining room, cinema room and gym.

Located in the heart of the iconic Battersea Power Station the apartment is just over 100 yards from the Battersea Power Station Tube (Northern Line) and 1 mile from Vauxhall Tube (Victoria Line) and overground. The development itself has a wide array of shops, restaurants, bars and cafes.







Total area (approx.): 136.9 sq. m (1,473.6 sq. ft)

LiFE RESIDENTIAL

11 Flagstaff House, London,
SW8 2LZ

Sales: 020 7476 1408

Lettings: 020 7582 7989

Energy Rating: B. We aim to make our particulars both accurate and reliable. However they are not guaranteed; nor do they form part of an offer or contract. If you require clarification on any points then please contact us, especially if you're traveling some distance to view. Please note that appliances and heating systems have not been tested and therefore no warranties can be given as to their good working order.