



## Price

£1,300 PCM

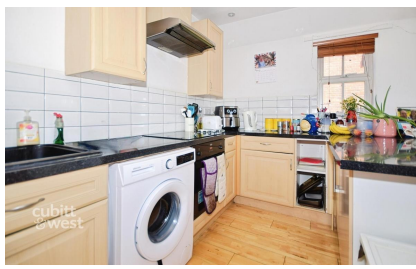
Fees Apply



Available 15/05/26

St Agnes Place  
Chichester PO19

**cubitt&west**  
Helping you move forwards



## Main Features

- Open House Event
- Second Floor Apartment
- Two double bedrooms
- En suite shower room
- Allocated parking
- Central Chichester

## Accommodation

- Hallway
- Open Plan Living Dining Kitchen 6.99 x 3.83
- Bedroom One 3.61 x 3.06
- Bedroom Two 3.61 x 3.06
- Bathroom 2.15 x 1.91



**Deposit required is £1,500.00**  
**Chichester District - Council Tax Band Tax Band C**

Renting a property is a big commitment and we recommend that you visit the local authority website and these websites which offer helpful information and advice about letting

- [www.gov.uk/government/publications/how-to-rent](http://www.gov.uk/government/publications/how-to-rent)
- [www.gov.uk/private-renting](http://www.gov.uk/private-renting)
- [www.cubittandwest.co.uk/renting/tenancy-fees-individuals/](http://www.cubittandwest.co.uk/renting/tenancy-fees-individuals/)
- [www.gov.uk/green-deal-energy-saving-measures](http://www.gov.uk/green-deal-energy-saving-measures)

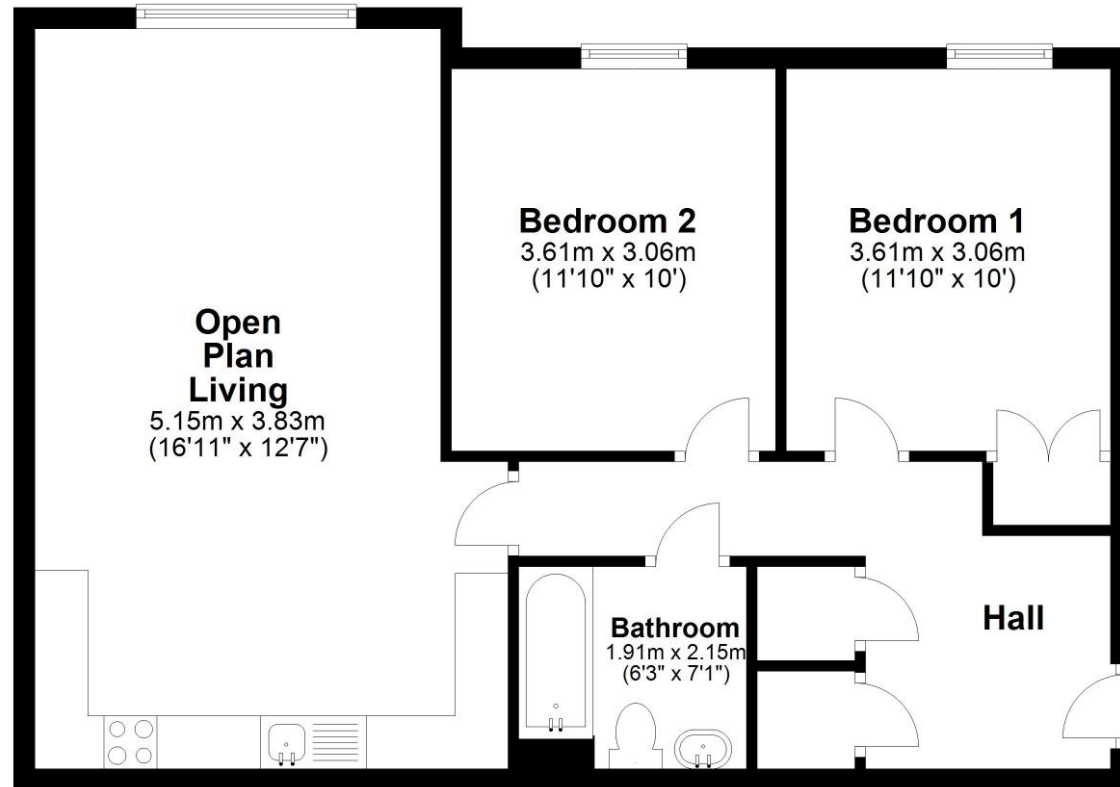
**Call Chichester 01243 774772 ■ [cubittandwest.co.uk](http://cubittandwest.co.uk)**

IMPORTANT INFORMATION: Please contact our Lettings Team who will confirm the total costs involved in renting this property. For clarification, we wish to inform the prospective tenant that we have prepared these details as a general guide. The agent has not carried out a detailed survey nor tested the services, appliances, or specific fittings (unless otherwise stated), and no warranty can be given as to their condition. All room measurements are taken at floor level. We strongly recommend that all the information which we provide about the property is verified by yourself and your advisers. The contents of this publication are © Cubitt & West, 2015. Cubitt & West is a trading name of Arun Estates Limited Registered in England No. 2597969



## Second Floor

Approx. 64.2 sq. metres (690.5 sq. feet)



Total area: approx. 64.2 sq. metres (690.5 sq. feet)