



Rathbone Place, W1T

£2,250,000

Dexters



Rathbone Place, W1T

A beautifully presented two-bedroom apartment featuring balconies to two aspects, offering excellent natural light and dual outlook views. Situated in Rathbone Place benefits from residents amenities, including a swimming pool, fully equipped gym, and private screening room.

The apartment features brushed stainless steel ironmongery, aluminium powder-coated triple glazed windows to facade, engineered timber flooring to living area, kitchen and hallway. Ambient integrated lighting with recessed LED downlights. Bespoke wardrobes with door-activated lighting. Timber veneer finish walk-in wardrobes. Custom-designed fully integrated fitted kitchen with feature timber panelling and Corian worktops, Integrated Miele appliances.

Residents of this luxury complex benefit from 24 hour concierge, Residents Lounge opening to private residents' garden. Amenities include wine storage and tasting room, screening room, gymnasium, 18-metre pool, sauna and steam room with changing facilities.

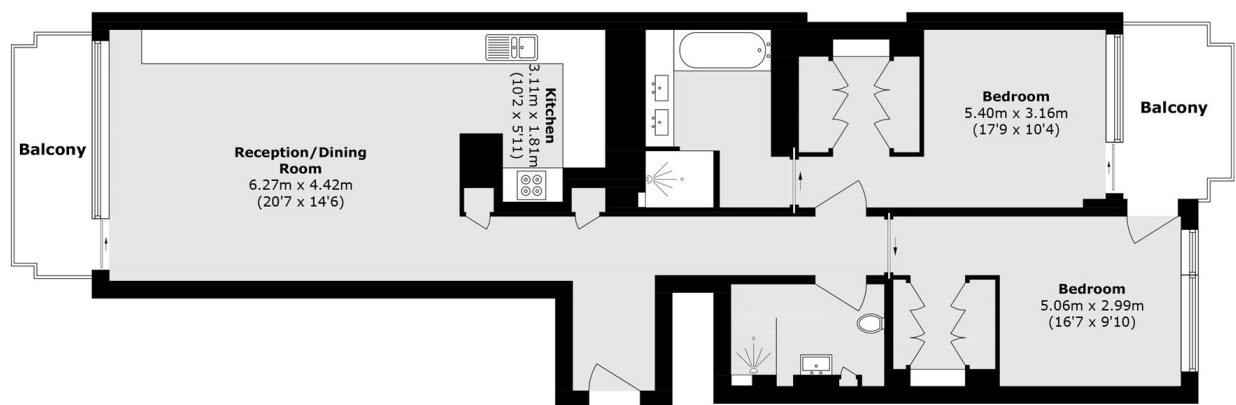
The Eurostar at St. Pancras is only 10 minutes from Rathbone Square by Tube. The Elizabeth Line at Tottenham Court Road is a minutes walk away with direct routes to Heathrow and Canary Wharf.

Features

- Two Double Bedrooms
- Two Balconies
- Bright Open Living Space
- Residents Amenities
- Secure Parking Available
- 999 from 2015



Rathbone Place, London, W1T



Fourth Floor

Total area (approx.): 95.7 sq. m (1030.1 sq. ft)
Balcony total (approx.): 11.1 sq. m (119.4 sq. ft)