



Battersea Powers Station, Holmby House

£3,000 pcm

- Available 19th June 2026
- Spacious Studio
- 2nd floor
- Spacious dining area
- 505 sq ft
- Luxury residents facilities
- Sought after location
- 24 hour concierge
- Great transport links

Incredible studio apartment located on the 2nd floor of Holmby House at the highly sought after Battersea Power Station development is now available. This apartment is equipped with all modern facilities and amenities needed to complement a comfortable lifestyle.

Situated on the 2nd floor, this 505 sq ft apartment comprises a large open-plan reception/kitchen area with integrated appliances and excellent storage space, further leading to a private winter garden adjacent to the dedicated sleeping area; boasting floor-to-ceiling built-in storage with self-illuminating shelves additional to the luxury three-piece bathroom suite.

This apartment is perfect for anyone seeking a luxurious living experience in a prime location. With its modern facilities, spacious living areas, and breathtaking views, it offers the perfect combination of comfort and style.

Prospect Place is located a few steps from Electric Boulevard which is a wide and multilevel street that connects the new Zone 1 London Underground station to the south, with the Power Station itself. Lined with shops, restaurants and cafes, the new landmark buildings create the gateway to the Battersea Power Station.





ONE LONDON

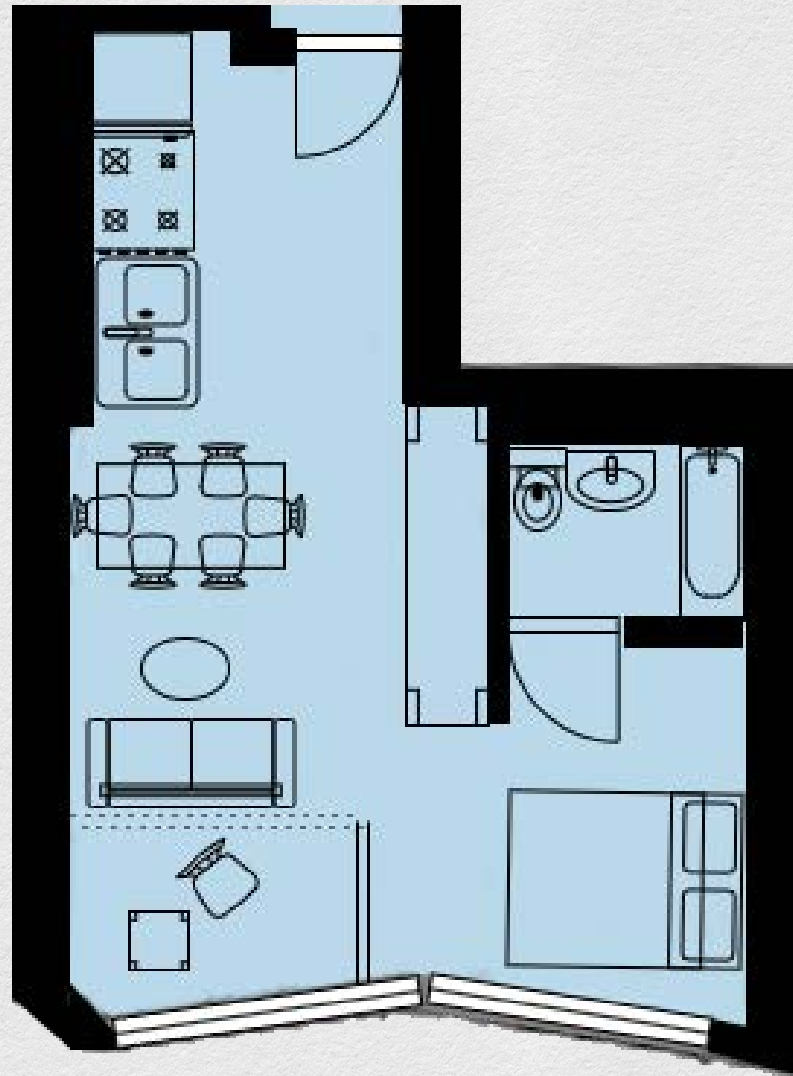
PROPERTY NAME

*Holmby House,
Battersea Power Station development
SW11*

SIZE

*internal 443 sq ft
winter garden 48 sq ft*

Studio Apartment



*** For illustration purposes only. Could not be to scale. One-London aims to ensure accuracy but is not liable for any discrepancies.*

HH102-2