



Price
£325,000

Freehold

2x  1x  1x 

**Stonecrop Close, St.
Mary's Island, Chatham,
Kent, ME4**

OVER 60?

Secure this property
for up to **59% less!**

Wards
Helping you move forwards



Main features

- Beautifully presented modern terrace house
- Separate lounge and great sized kitchen/diner
- Garage and driveway parking
- Perfect for a young family or those looking to downsize
- Sought-after location in a popular position on St Mary's Island

Accommodation

GROUND FLOOR

Entrance Hallway

Lounge: 14'10 x 9'9 (4.52m x 2.97m)

Kitchen/Diner: 13'1 x 8'10 (3.99m x 2.69m)

FIRST FLOOR

Landing

Bedroom 1: 11'3 x 9'2 (3.43m x 2.80m)

Bedroom 2: 13'2 x 8'4 (4.02m x 2.54m)

Bathroom

OUTSIDE

Front Garden

Rear Garden

Garage

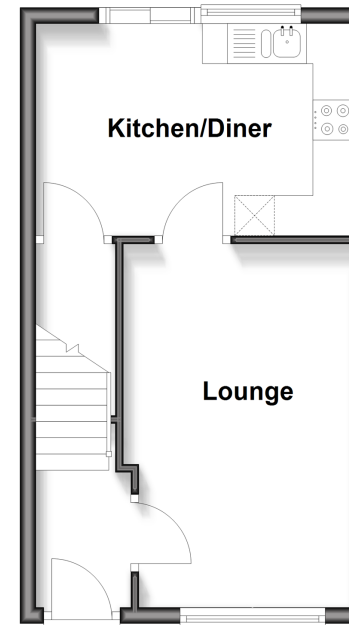
Driveway

Call Chatham - 01634 841243 ■ wardsofchatham.co.uk

- Legal advice should be taken to verify fixtures/fittings, planning, alterations and/or lease details
- Appliances & services are untested, dimensions are approximate and floor plans are not to scale
- Through a Homewise Home For Life Plan people aged 60+ can secure this property for up to 50% less, by purchasing a Lifetime Lease.

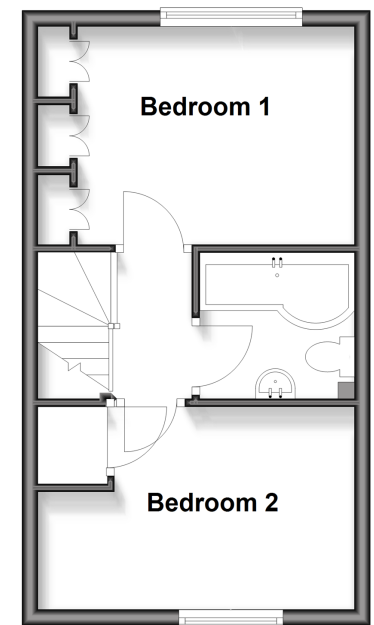
Ground Floor

Approx. 29.1 sq. metres (313.7 sq. feet)



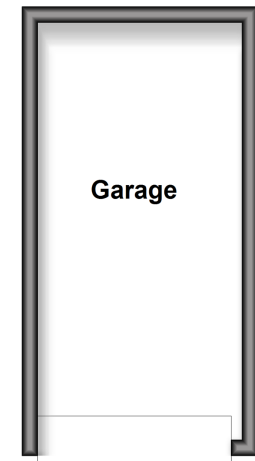
First Floor

Approx. 29.1 sq. metres (313.7 sq. feet)



Outbuilding

Approx. 13.5 sq. metres (145.1 sq. feet)



10424564/20250827/BC/BC