



COMBEDALE ROAD, SE10

£475,000

Duplex apartment
Roof terrace
Close to stations
Two bedrooms
Two bathrooms
Energy rating: b

@marshandparsons
marshandparsons.co.uk

MARSH &
PARSONS



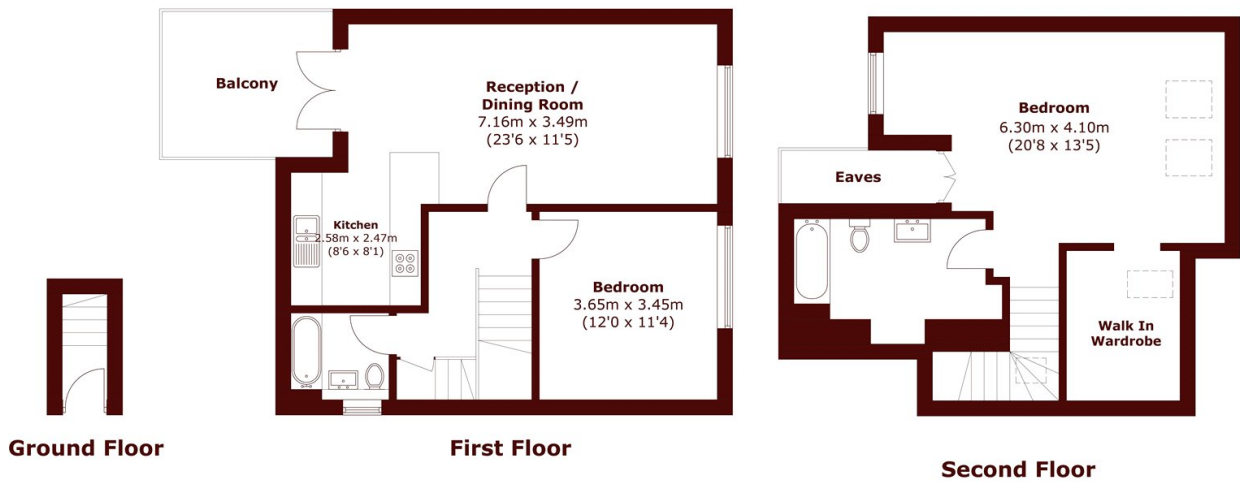
ABOUT THE PROPERTY

A very spacious duplex apartment, occupying the top two levels and featuring a roof terrace to rear. Property is being sold chain free, features its own entrance door and the interior comprises a very spacious lounge/diner and an open plan kitchen. There is a family bathroom, two double bedrooms with the main bedroom featuring an en suite, walk-in wardrobe and lots of storage in the eaves.

Greenwich town centre is close by, as well as Blackheath village with its famous heath. Westcombe Park mainline station is a very short walk away, as for bus routes, local shops and shopping parks. North Greenwich tube station is within walking distance or a very short bus ride away.



STEP INSIDE COMBEDALE ROAD



Total area (approx.): 105.1 sq. m (1,131.3 sq. ft)
(Excluding Eaves)
Balcony (approx.): 9.4 sq. m (101.2 sq. ft)

Greenwich
020 8312 8312

Energy Rating: B We aim to make our particulars both accurate and reliable. However, they are not guaranteed; nor do they form part of an offer or contract. If you require clarification on any points then please contact us, especially if you're traveling some distance to view. Please note that appliances and heating systems have not been tested and therefore no warranties can be given as to their good working order

MARSH &
PARSONS