

A new home *for* a new lifestyle

19 Bolsover Street

FITZROVIA · LONDON W1

Final 3-bedroom apartment remaining



The residence APARTMENT 09 · FIRST FLOOR

An exceptional three-bedroom lateral apartment on the first floor of 19 Bolsover Street.

Bolsover Street is a boutique collection of just 17 private residences behind an elegant Georgian facade in the heart of Fitzrovia. This is the final residence remaining.

1,986 SQ FT · 184.5 M ²	3 BEDROOMS	3 EN SUITES + WC	1st FLOOR · LATERAL	West FACING ASPECT
---------------------------------------	---------------	---------------------	------------------------	-----------------------

Accommodation

Reception, Dining & Kitchen	5.5 × 11.6 m	18'1" × 38'1"
Master Bedroom	3.6 × 5.2 m	11'10" × 17'1"
Bedroom 2	3.6 × 3.2 m	11'10" × 10'6"
Bedroom 3	4.7 × 2.9 m	15'5" × 9'6"
En suite to each bedroom · guest WC		

Specification

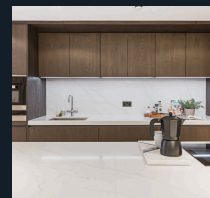
- Coffered ceilings with integrated lighting
- Bespoke joinery throughout
- Marble surfaces & premium cabinetry
- Spa-style soaking tubs to each en suite
- Comfort cooling throughout
- Ready for immediate occupation

Connectivity

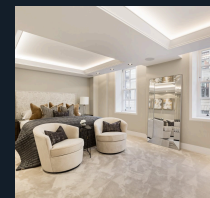
Oxford Circus, Great Portland Street & Goodge Street stations — moments from Marylebone, Soho & the West End, with restaurants, members' clubs, boutiques & galleries within walking distance.



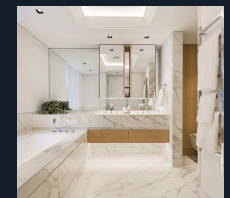
FIRST FLOOR PLAN · GROSS INTERNAL AREA 1,986 SQ FT



KITCHEN



MASTER SUITE



BATHROOM

GUIDE PRICE	TENURE	SERVICE CHARGE	GROUND RENT	EPC
£4,350,000	Leasehold 899 years	c. £12.66 per sq ft pa	£1 per annum	TBC

JLL Residential

30 Warwick Street, London W1B 5NH
+44 (0)20 7087 5111 · newhomes@jll.co.uk · jll.co.uk



Scan to view online