



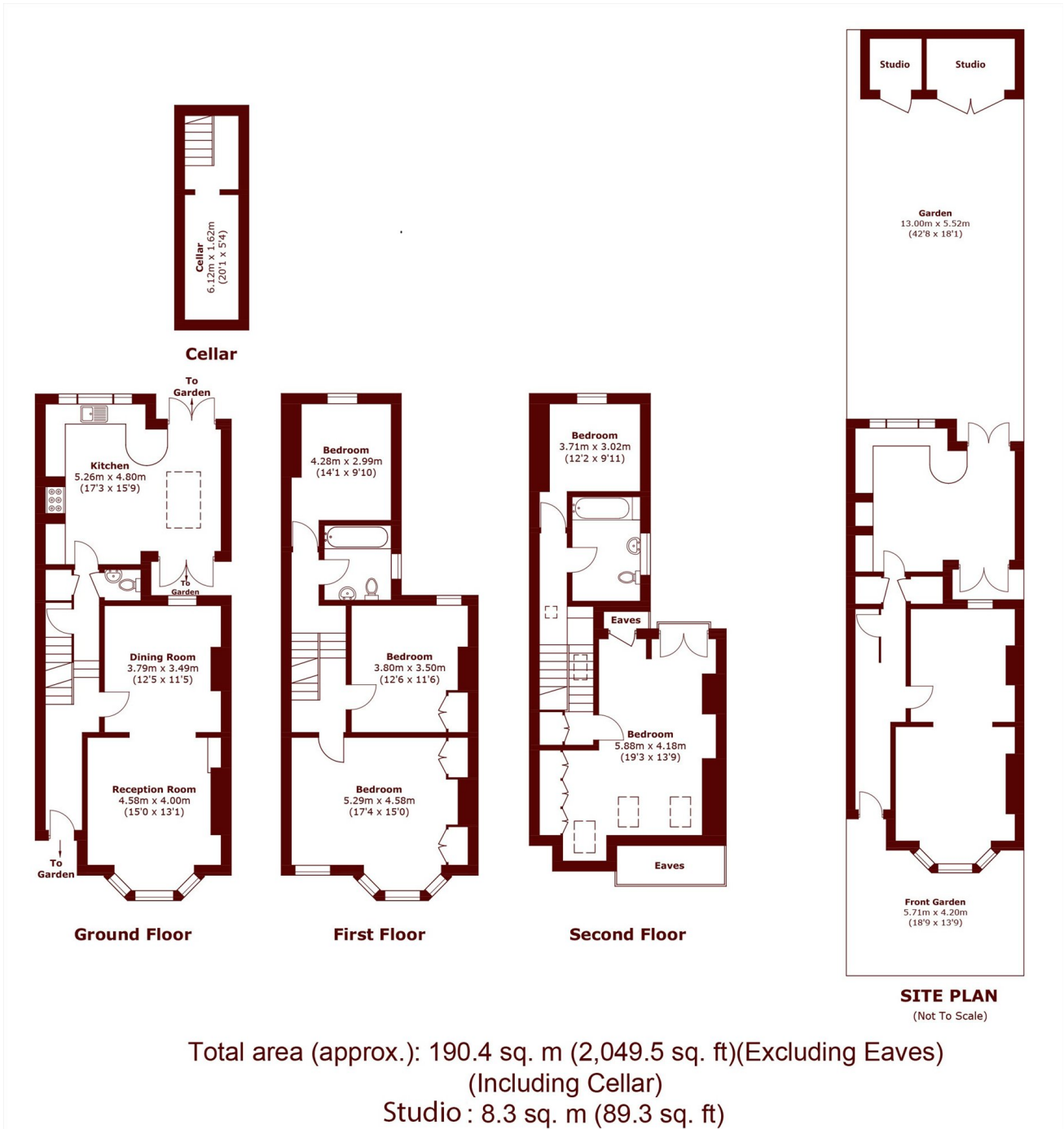
## CLEVELAND ROAD, SW13

£2,150,000

Marsh & Parsons are proud to represent this delightful Victorian five bedroom terraced house on Cleveland Road, located in the heart of Barnes Village. The home has been loved and lived in by its existing owners for

Victorian terraced family home	Spacious shaker kitchen
Five double bedrooms	Private walled garden
Double reception room	Barnes village

# STEP INSIDE CLEVELAND ROAD



**Barnes & East Sheen**  
020 8563 8333

Energy Rating: C We aim to make our particulars both accurate and reliable. However, they are not guaranteed; nor do they form part of an offer or contract. If you require clarification on any points then please contact us, especially if you're traveling some distance to view. Please note that appliances and heating systems have not been tested and therefore no warranties can be given as to their good working order

**MARSH &  
PARSONS**