



Carters Close, Sherington, Newport Pagnell, MK16 9NW

welcome to

Carters Close, Sherington, Newport Pagnell

Situated in the highly sought-after and peaceful cul-de-sac of Carters Close in the desirable village of Sherington, Newport Pagnell, this well-presented four-bedroom linked-detached family home offers spacious and versatile living accommodation ideal for modern family life.

Entrance Hall

Solid wood door to the front, solid wood flooring, radiator and stairs to the first floor. Doors to the lounge, dining room and kitchen.

Lounge

TV point, 2 radiators, carpet and double-glazed window to the front. Double-glazed windows and double-glazed doors leading out to the garden.

Dining Room

Solid wood flooring, radiator and double-glazed window to the front. Solid wood glazed doors to the conservatory.

Conservatory

Upvc & brick construction with double-glazed windows, solar blinds, tiled flooring and 2 radiators. Double-glazed doors leading out to the garden.

Kitchen

Fitted with a mix of wall and base units with work top over, stainless steel sink with mixer tap and drainer, electric eye-level double oven and an electric hob with extractor fan over. Integrated dishwasher. Double-glazed window to the side and door to the utility room.

Utility Room

Fitted with base units with work top over and space for a washing machine and tumble dryer. Combi boiler, wood effect flooring, extractor fan and doors to the study and wet room. Door to the garage and double-glazed door to the garden.

Study

Radiator and double-glazed window to the side.

Wet Room

Fully tiled with a wall mounted wash hand basin with mixer tap, low-level WC and shower with shower screen. Heated towel rail and extractor fan.

First Floor Landing

Stairs from the ground floor, loft access and double-glazed window to the rear. Doors to all bedrooms and the family bathroom.

Bedroom One

Built-in wardrobe with hanging space and storage, airing cupboard, TV point and radiator. Double-glazed window to the front.

En-Suite

Fully tiled with a wall mounted wash hand basin with mixer tap, low-level WC and a shower cubicle. Heated towel rail and double-glazed obscured window to the front.

Bedroom Two

Built-in wardrobe with hanging space and storage, radiator and double-glazed window to the front.

Bedroom Three

Radiator and double-glazed window to the side.

Bedroom Four

Radiator and double-glazed window to the rear.

Bathroom

Fully tiled with a wall mounted wash hand basin, low-level WC and a bath with shower over. Heated towel rail and double-glazed obscured window to the rear.

Outside Garage

Pitched roof garage with eaves storage, up & over door, power and light.

Parking

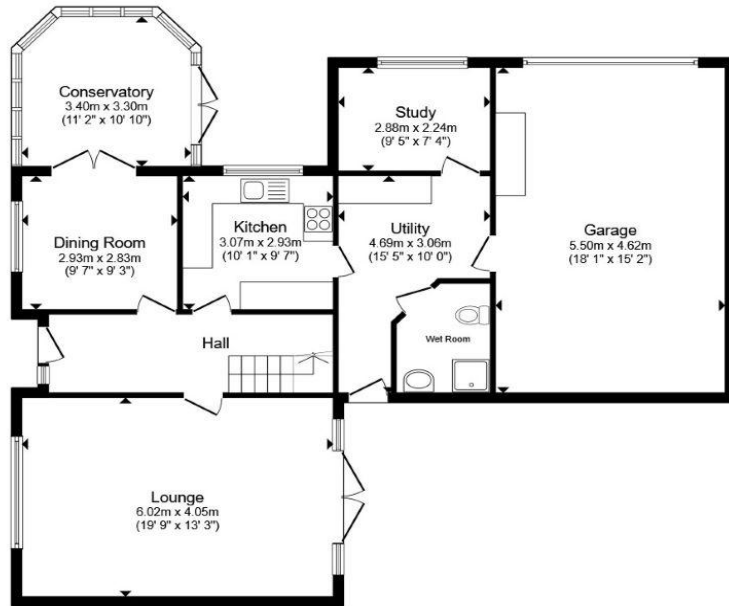
Gravel driveway in front of the garage providing ample off-road parking.

Front Garden

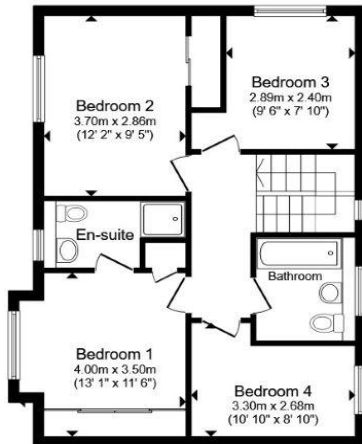
Wrap around front garden which is laid to lawn with a gravel area and water tap. Driveway providing off-road parking for approximately 4 cars.

Rear Garden

Enclosed private garden which is mainly laid to lawn with shrub borders, a patio area, outside water tap and shed. There is also gated side access.



Ground Floor



First Floor

Total floor area 180.0 m² (1,938 sq.ft.) approx

This floor plan is for illustrative purposes only. It is not drawn to scale. Any measurements, floor areas (including any total floor area), openings and orientation are approximate. No details are guaranteed, they cannot be relied upon for any purpose and they do not form part of any agreement. No liability is taken for any error, omission or misstatement. A party must rely upon its own inspection(s). Powered by www.propertybox.io



welcome to
Carters Close,
Sherington, Newport Pagnell

- FOUR-BEDROOM LINK-DETACHED
- CHAIN FREE
- SPACIOUS LIVING ACCOMMODATION
- EN-SUITE TO MASTER
- GARAGE & PARKING

Tenure: Freehold EPC Rating: Awaiting
Council Tax Band: E

£550,000



view this property online [browndmerry.co.uk/Property/NPL108058](https://www.browndmerry.co.uk/Property/NPL108058)



Property Ref:
NPL108058 - 0006

1. MONEY LAUNDERING REGULATIONS Intending purchasers will be asked to produce identification documentation at a later stage and we would ask for your co-operation in order that there is no delay in agreeing the sale. 2. These particulars do not constitute part or all of an offer or contract. 3. The measurements indicated are supplied for guidance only and as such must be considered incorrect. Potential buyers are advised to recheck measurements before committing to any expense. 4. We have not tested any apparatus, equipment, fixtures or services and it is in the buyers interest to check the working condition of any appliances. 5. Where an EPC, or a Home Report (Scotland only) is held for this property, it is available for inspection at the branch by appointment. If you require a printed version of a Home Report, you will need to pay a reasonable production charge reflecting printing and other costs. 6. We are not able to offer an opinion either written or verbal on the content of these reports and this must be obtained from your legal representative. 7. Whilst we take care in preparing these reports, a buyer should ensure that his/her legal representative confirms as soon as possible all matters relating to title including the extent and boundaries of the property and other important matters before exchange of contracts.

Brown & Merry is a trading name of Sequence (UK) Limited which is registered in England and Wales under company number 4268443, Registered Office is Cumbria House, 16-20 Hockliffe Street, Leighton Buzzard, Bedfordshire, LU7 1GN. VAT Registration Number is 500 2481 05.

brown & merry



01908 611242



newportpagnell@browndmerry.co.uk



74A High Street, Newport Pagnell, MILTON
KEYNES, Buckinghamshire, MK16 8AQ



[browndmerry.co.uk](https://www.browndmerry.co.uk)