



Portman Place, E2

£575,000

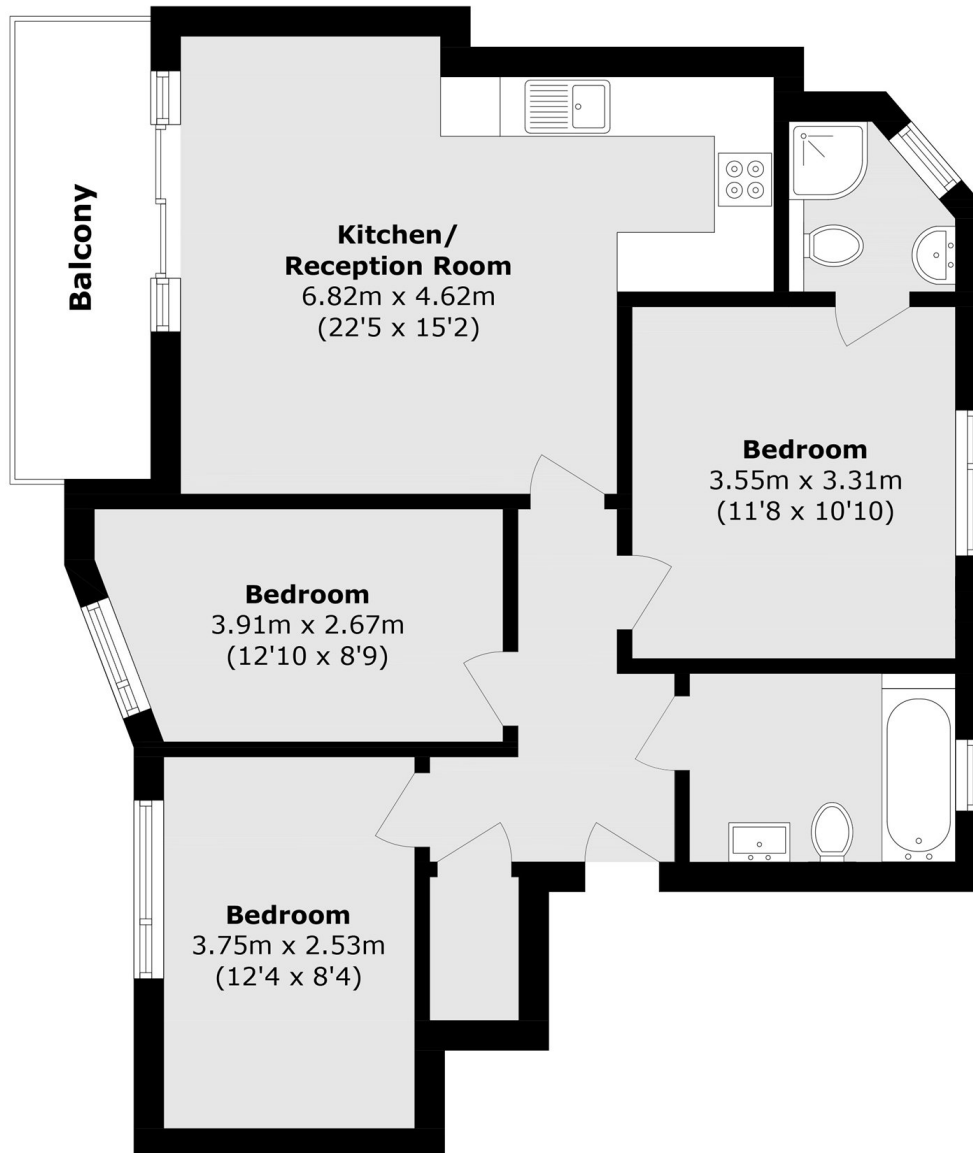
Three bedroom, two bathroom apartment that provides contemporary city living in a modern development. The apartment has a spacious open plan living room with ample space to dine and a fully integrated kitchen, this area leads out to the apartments private balcony. The apartment has three double bedrooms, the principle bedroom is en-suite. There is plenty of additional storage in the entrance hall as well as a modern family bathroom.

Residents are within walking distance of numerous cafés, bars and restaurants, as well as the canal and Victoria Park. With fantastic access to public transportation ensures easy connectivity to the broader city, making it an ideal residence for those who appreciate both the local flair and the cosmopolitan charm of London.

Features

- Three bedrooms
- Two bathrooms
- Private balcony
- Modern development
- Sought after location

Portman Place,
London, E2



Total area (approx.): 71.7 sq. m (771.7 sq. ft)
Balcony total (approx.): 6.3 sq. m (67.8 sq. ft)