



30 Brougham Court

, Peterlee, SR8 1QA

£135,000

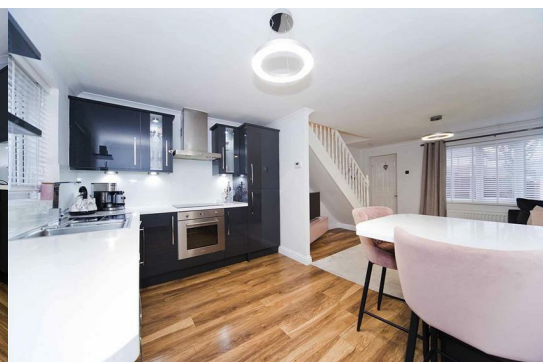


Welcome to this stunning two-bedroom semi-detached home located in the highly sought-after estate of Brougham Court, Peterlee. Built in 1990, this charming property offers a comfortable living space of 710 square feet, making it an ideal choice for first-time buyers or small families.

As you enter, you will find a well-proportioned reception room that provides a warm and inviting atmosphere, perfect for relaxing or entertaining guests opening into the modern kitchen which is designed with functionality in mind, featuring contemporary fittings that make cooking a delight. The property also boasts a stylish bathroom, ensuring that all your needs are met in comfort and style.

The two bedrooms are generously sized, providing ample space for rest and relaxation. Outside, you will appreciate the convenience of a garage and a driveway that accommodates parking for two vehicles. The rear garden offers a private outdoor space, ideal for enjoying sunny days or hosting barbecues with family and friends.

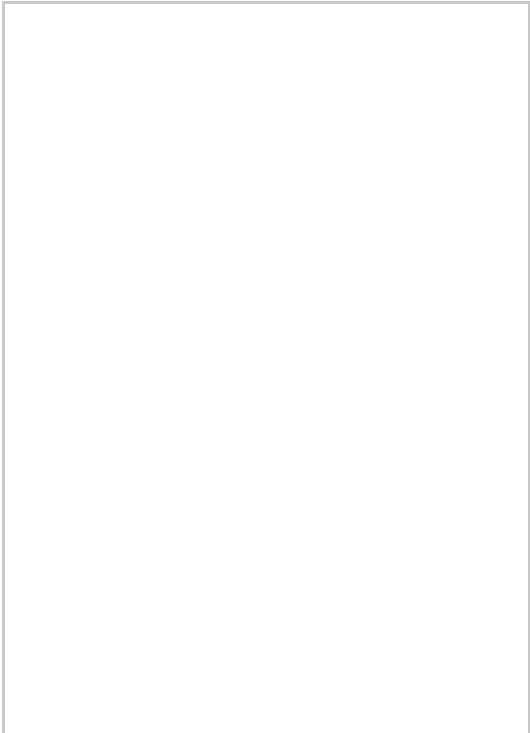
Situated close to local schools, shops, and excellent transport links via the A19, this property is perfectly positioned for both convenience and accessibility. Whether you are commuting for work or enjoying the local amenities,



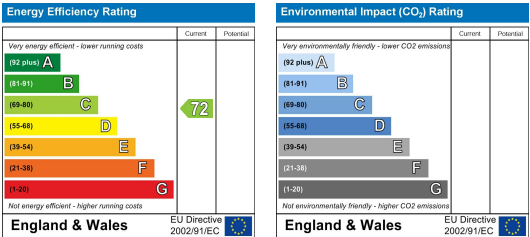
Area Map



Floor Plan



Energy Efficiency Graph



These particulars, whilst believed to be accurate are set out as a general outline only for guidance and do not constitute any part of an offer or contract. Intending purchasers should not rely on them as statements of representation of fact, but must satisfy themselves by inspection or otherwise as to their accuracy. No person in this firms employment has the authority to make or give any representation or warranty in respect of the property.