



# Monarch Square

London, SW11

£3,600 per month  
(£830.77 per week)

Stylish 2-bed, 2-bath apartment in the sought-after Provence Apartments at One Clapham Junction, Battersea. Features a private balcony, concierge, gym and landscaped gardens. Moments from Clapham Junction Station, with excellent transport links.

**CHESTERTONS**



# Monarch Square

London, SW11

- Two Bedroom
- Two Bathroom
- Balcony
- Communal Gardens
- Concierge



Set within the highly desirable Provence Apartments at One Clapham Junction, this impressive two-bedroom, two-bathroom apartment offers stylish contemporary living in the heart of Battersea.

The apartment features a private balcony and benefits from an exceptional range of resident facilities, including a 24-hour concierge service, a state-of-the-art gym equipped with Peloton bikes and a beautifully landscaped communal gardens.

Perfectly located just moments from Clapham Junction Station, the property provides superb transport connections to London Victoria,

---

**Minimum Term:** months  
**Deposit Required:** £4,153.85  
**Local Authority:**  
**Council Tax Band:**  
**EPC Rating:** To be confirmed  
**Furnished**

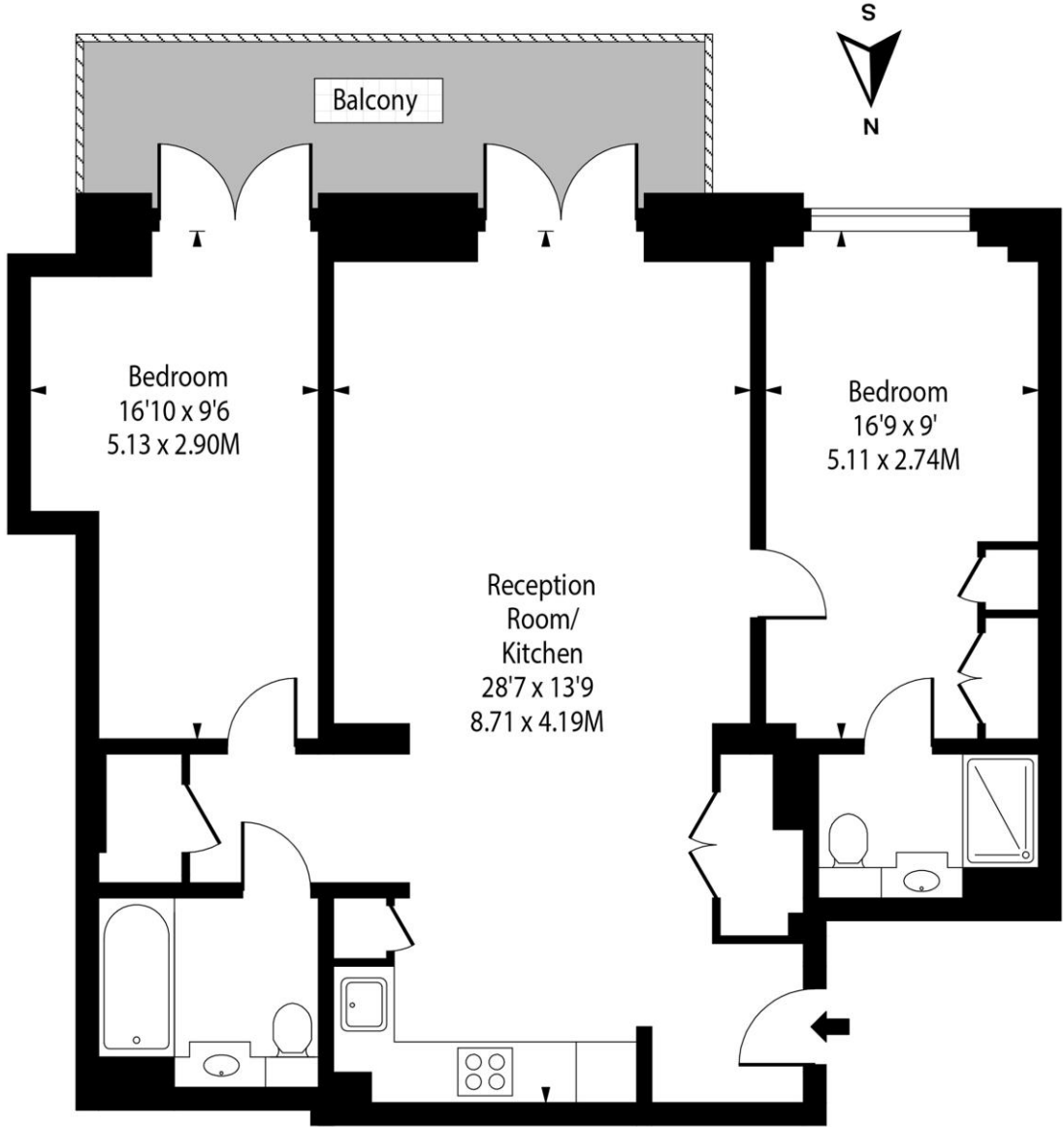
---

### *Chestertons Battersea & Northcote Road Lettings*

96 Northcote Road  
London  
SW11 6QW  
batterseariselettingsusers@chestertons.co.uk  
02072985630  
chestertons.co.uk

Additional tenant charges apply (fees apply to non-AST tenancies only)  
Tenancy Agreement Fee: £300  
References per Tenant/Guarantor: £60  
Inventory check (approx. £100 – £250 inc. VAT)  
chestertons.co.uk/property-to-rent/applicable-fees

# Provence Apartments, SW11



First Floor

**Approx Gross Internal Area      861 Sq Ft - 79.99 Sq M**

Includes Limited Use Area - 19 Sq Ft  
 Drawn in Accordance with IPMS 3B: Residential  
 Illustration For Identification Purposes Only - Not to Scale  
[www.homespacestudio.co.uk](http://www.homespacestudio.co.uk) - Ref. No. 54743



Chesterton UK Services Limited trading as Chestertons for themselves and for the vendor of this property whose agents they are, give notice that (i) these particulars do not constitute any part of an offer or contract, (ii) all statements contained within these particulars are made without responsibility on the part of Chestertons or the vendor, (iii) whilst made in good faith, none of the statements contained within these particulars are to be relied upon as a statement or representation of fact, (iv) any intending purchasers must satisfy themselves by inspection or otherwise as to the correctness of each of the statements contained within these particulars, (v) the vendor does not make or give either Chestertons or any person in their employment any authority to make or give representation or warranty whatsoever in relation to this property. Wide angle lenses may be used. ©Copyright Chestertons | Chesterton Global Ltd | Registered Office 5th Floor, The Lantern, 75 Hampstead Road, London, NW1 2PL Registered Company Number 05334580.

