

Carlow Street, NW1

£3,000 Per calendar month

This immaculately presented two double bedroom apartment set in an art-deco warehouse with a concierge service. The property boasts a large open plan living room, two luxury bathrooms, spacious bedrooms and wooden floors throughout.

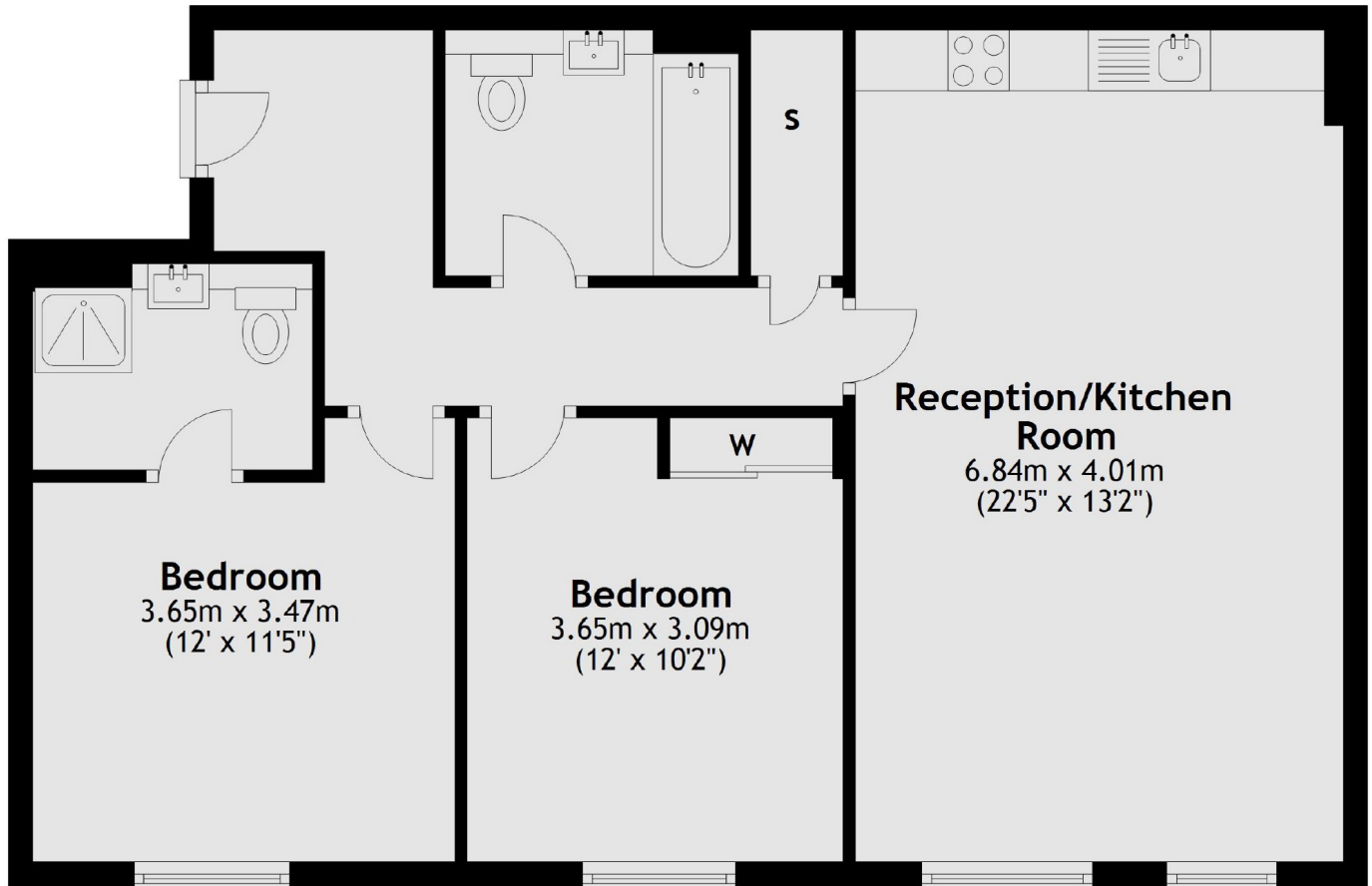
Superbly located just a short distance from the tranquil Regents Park, Mornington Crescent and St Pancras/Kings cross stations, Carlow House offers the perfect balance for London living.

Features

- Excellent Location
- Modern Apartment
- Luxury Bathrooms
- Open Plan Living
- Concierge
- Lift Access

**Carlow Street,
London, NW1**

Third Floor



Total area: approx. 71.3 sq. metres (767.7 sq. feet)