



24 Markham Close
, Bournemouth, BH10 7HU

Offers over £300,000



24 Markham Close

, Bournemouth, BH10 7HU

Step into this charming three bedroom home, ideally situated in the sought-after BH10 postcode, perfect for first-time buyers or those looking for a well-presented family home. Benefitting from off-road parking and offered with no forward chain, this property provides an excellent opportunity for a smooth and straightforward purchase.

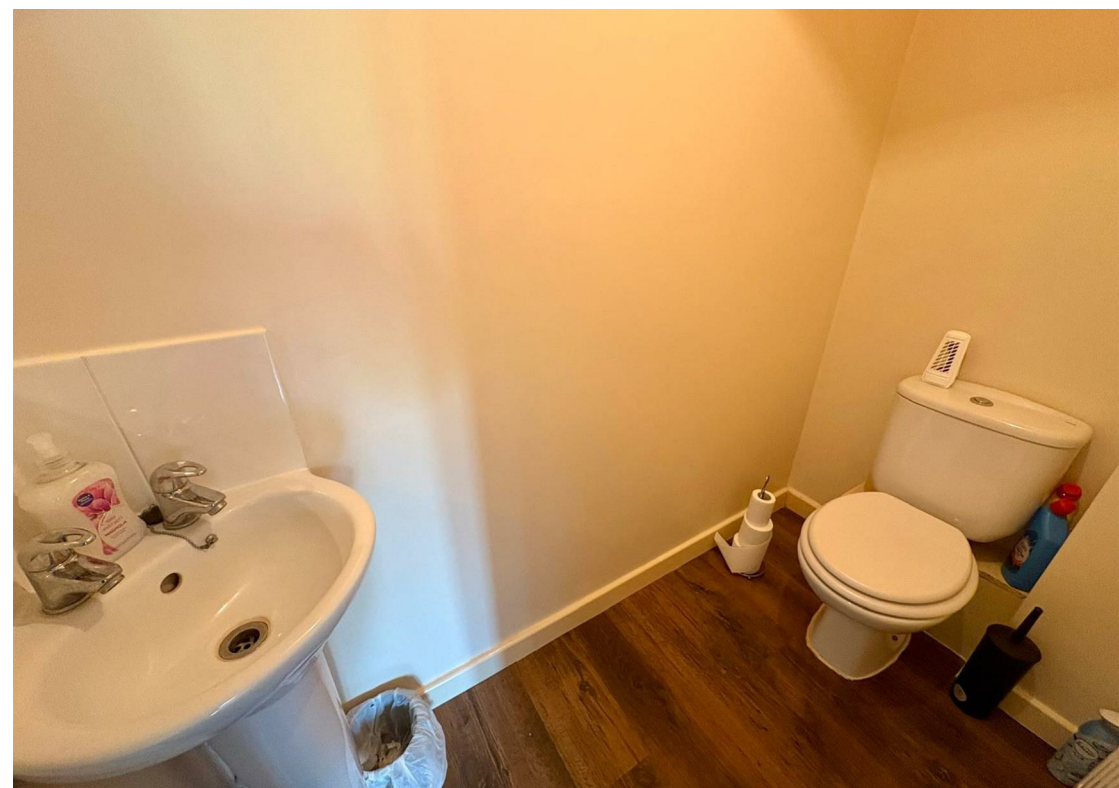
Upon entering, you are welcomed by a spacious entrance hallway, providing access to all ground floor accommodation. There is also the added convenience of a downstairs WC. The modern kitchen is generously proportioned, making it ideal for both everyday living.

To the rear of the property lies a bright and airy lounge/dining area. Flooded with natural light thanks to French doors opening directly onto the rear garden, this space creates a wonderful atmosphere for relaxing or hosting family and friends.

Upstairs, the property offers three well-proportioned bedrooms alongside a modern family bathroom with bath and overhead shower.

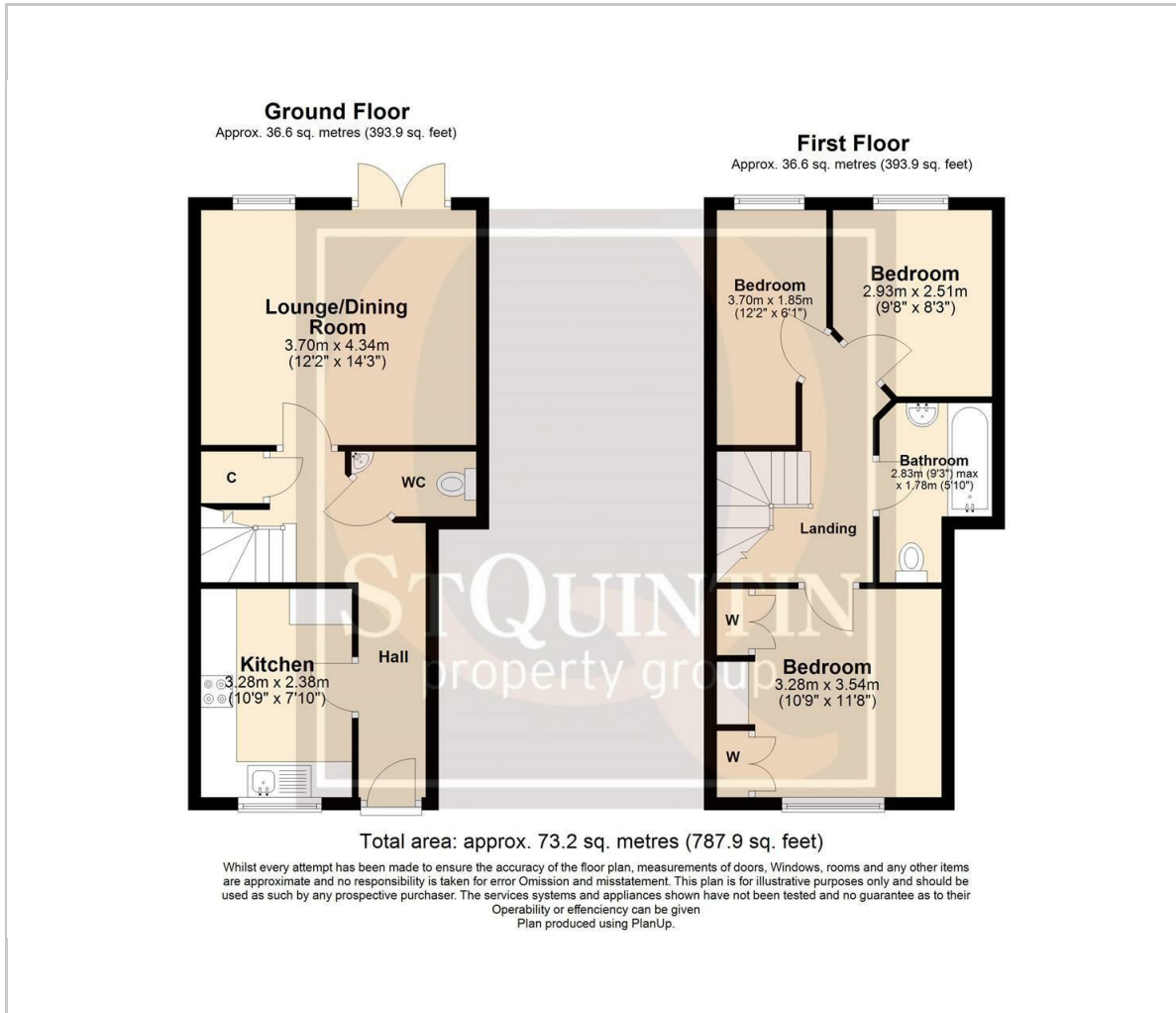
Externally, the rear garden is generous in size and designed for low maintenance, perfect for enjoying the sunshine throughout the day.

Situated within a popular BH10 location, the property benefits from easy access to a range of local amenities, including well-regarded schools, parks, and shopping facilities, ensuring convenience for everyday living.





Floor Plan

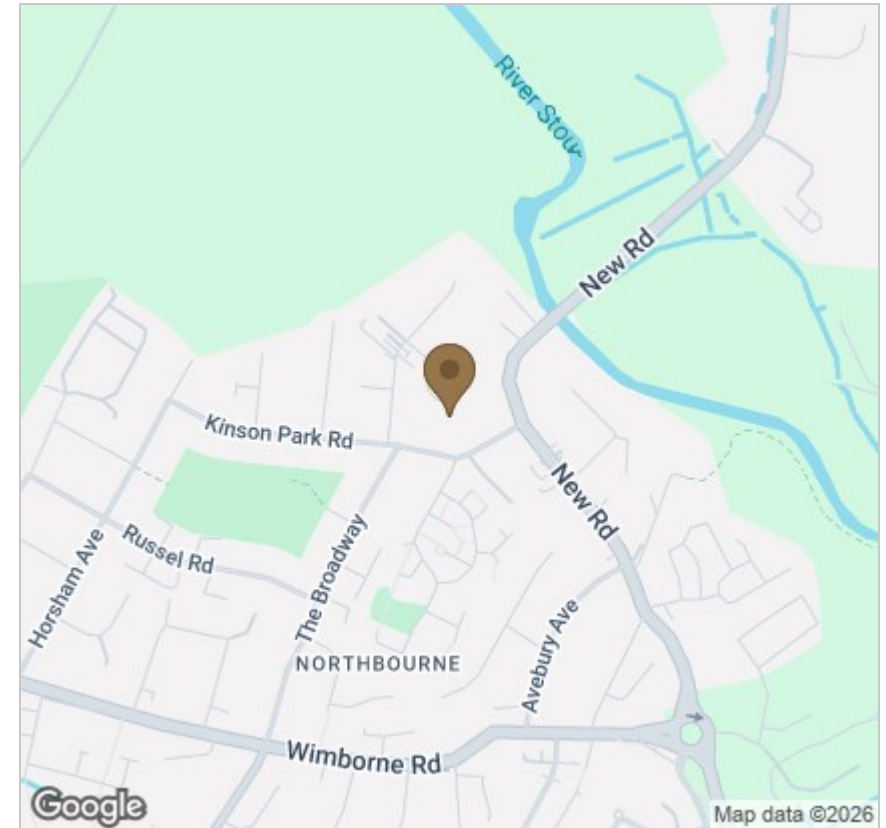


Viewing

Please contact our StQ Property Group Office on 01202877123 if you wish to arrange a viewing appointment for this property or require further information.

These particulars, whilst believed to be accurate are set out as a general outline only for guidance and do not constitute any part of an offer or contract. Intending purchasers should not rely on them as statements of representation of fact, but must satisfy themselves by inspection or otherwise as to their accuracy. No person in this firm's employment has the authority to make or give any representation or warranty in respect of the property.

Area Map



Energy Efficiency Graph

