



Aldwinckles Yard, Market Harborough, LE16 7AL

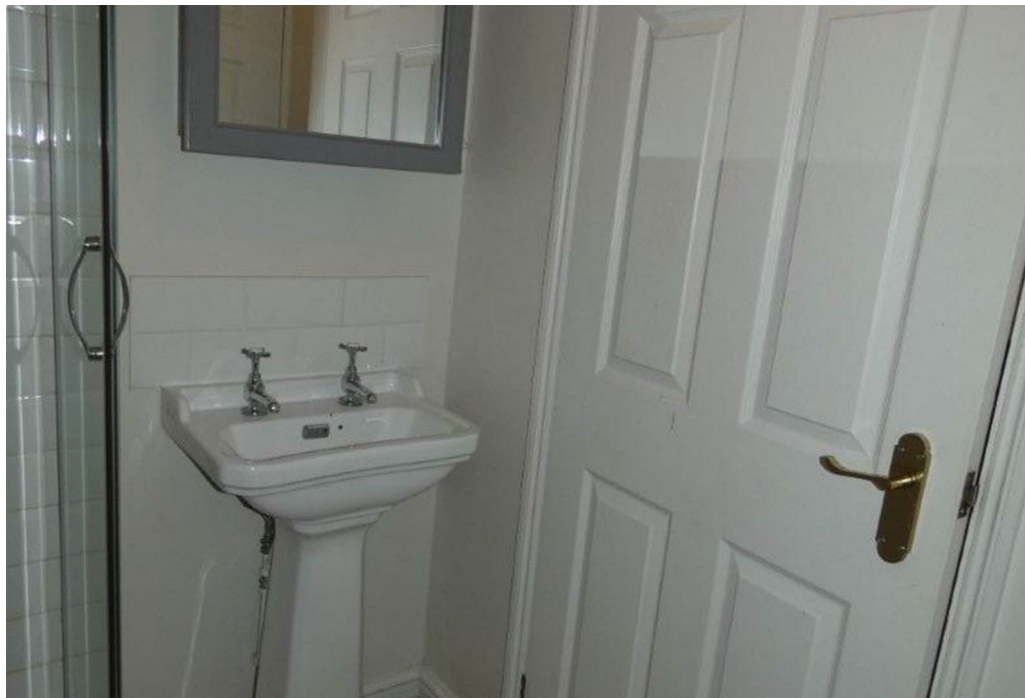
Part of  
**ANDREW  
GRANGER & CO**

**SHELDON  
BOSLEY  
KNIGHT** LAND AND  
PROPERTY  
PROFESSIONALS

# Property Description

\*\*\*DEPOSIT ALTERNATIVE AVAILABLE\*\*\* A character one bedroom Mews property situated within a central location to the town of Market Harborough. The accommodation comprises of an entrance, open plan lounge/kitchen/dining area, downstairs cloakroom. Upstairs there is a double bedroom, and a bathroom with shower over the bath. Outside there is off road parking for one car. Electric storage heaters. Unfurnished. EPC D. Council Tax A. Rent £795pcm. Deposit £917. Available middle of August.







## Key Features

- \*\*\*DEPOSIT ALTERNATIVE AVAILABLE\*\*\*
- One bedroom mews style property
- Conveniently located close to the town centre
- Character property
- Double Bedroom
- Bathroom with Shower
- Off-road parking for one vehicle
- EPC D, Council Tax A
- Rent £795pcm. Deposit £917
- Available middle of August

**£795 Per Month**