

OVER 60?

Secure this property
for up to **59% less!**



Guide Price
£500,000
Freehold

4x  2x  2x 

Durndale Lane, Northfleet, Gravesend,
Kent, DA11

Wards
Helping you move forwards



Main features

- An amazing family home
- Quiet cul-de-sac location
- Handy downstairs cloakroom
- Private and child friendly rear garden
- En-suite shower room to Bedroom 1

Accommodation

GROUND FLOOR

Entrance Hall
Cloakroom
Lounge: 17'5 x 10'9 (5.31m x 3.28m)
Dining Room : 10'8 x 8'6 (3.25m x 2.59m)
Kitchen : 17'4 x 8'7 (5.29m x 2.62m)

FIRST FLOOR

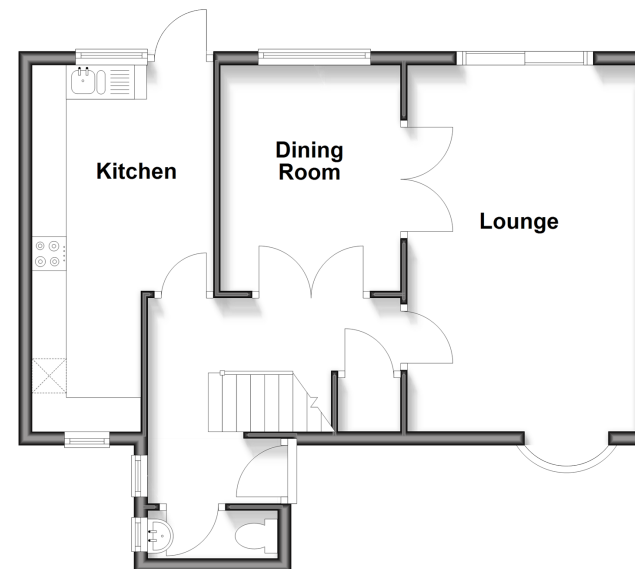
Landing
Bedroom 1: 11'1 x 11'0 (3.38m x 3.36m)
En-suite Shower Room
Bathroom
Bedroom 2: 11'3 x 9'8 (3.43m x 2.95m)
Bedroom 3: 8'4 x 7'6 (2.54m x 2.29m)
Bedroom 4: 7'3 x 6'3 (2.21m x 1.91m)

OUTSIDE

Front Garden
Driveway
Garage
Rear Garden

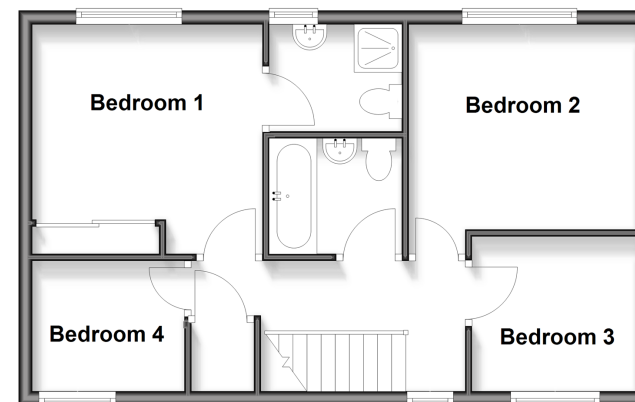
Ground Floor

Approx. 51.1 sq. metres (550.2 sq. feet)



First Floor

Approx. 47.4 sq. metres (510.0 sq. feet)



Call Gravesend - 01474 352417 ■ wardsofkent.co.uk

- Legal advice should be taken to verify fixtures/fittings, planning, alterations and/or lease details
- Appliances & services are untested, dimensions are approximate and floor plans are not to scale
- Through a Homewise Home For Life Plan people aged 60+ can secure this property for up to 50% less, by purchasing a Lifetime Lease.



11139561/20251027/KG/KG