



Pond Close | Chelsea | London | SW3 6QJ

£14,085 Per month

ESON 2[®]
REAL ESTATE

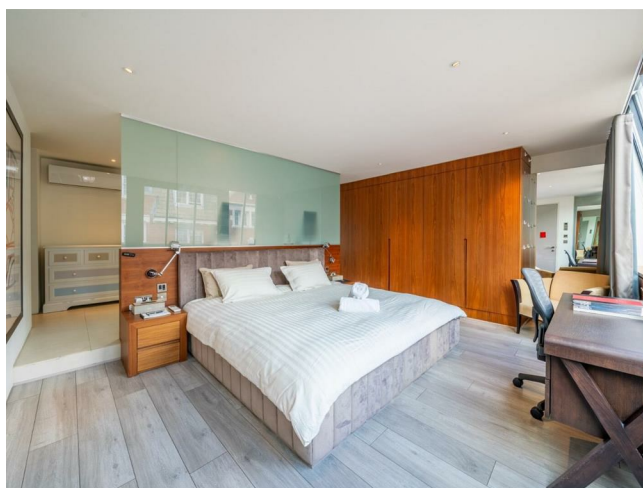
Key features

- 4 bedrooms, 4 bathrooms
- Two reception rooms
- Sculptural walnut staircase
- Designer kitchen with marble island
- Dual wine coolers & private bar
- Rooflight & abundant natural light
- Private terrace
- Mews setting
- Moments from King's Road & Sloane Square

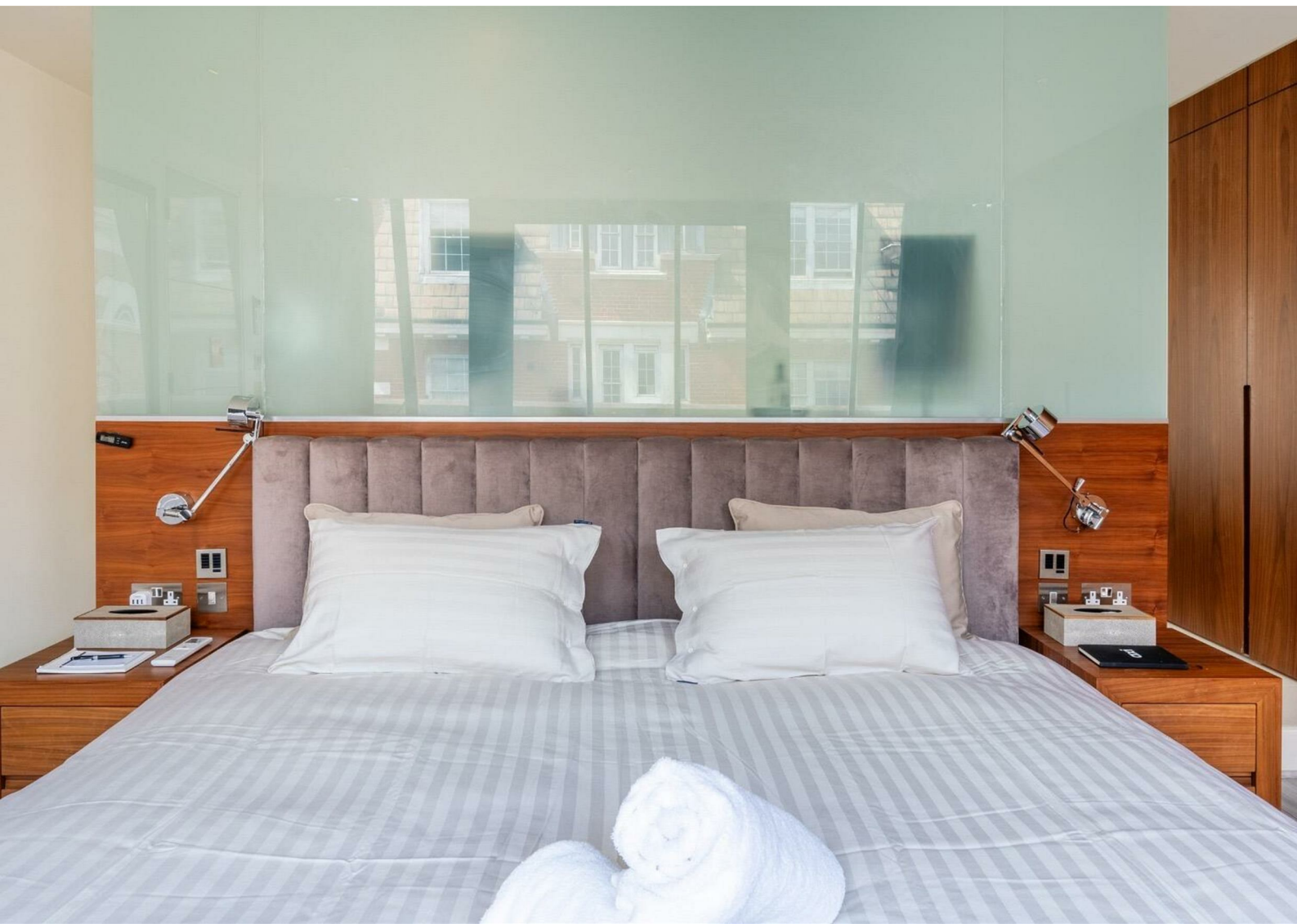
Description

A rare and exceptional mews house set within one of Chelsea's most coveted and discreet addresses, Pond Close offers an outstanding opportunity to rent a truly distinctive London home. Arranged over four floors and extending to a generous footprint, this beautifully designed residence combines architectural flair with an abundance of living space rarely found in prime SW3.

Directions



A rare and generously proportioned mews house set on the sought-after Pond Close in the heart of Chelsea SW3, this exceptional four-bedroom, four-bathroom home is arranged across multiple floors and defined by a bespoke sculptural walnut staircase rising beneath a full rooflight. Two impressive reception rooms including a sweeping open living space and a formal dining room with curved leather banquette and double-height ceilings are complemented by a designer chef's kitchen with marble-effect island, mirrored splashbacks, and a private drinks bar with dual wine coolers tucked beneath the stair.



Floor plans



APPROXIMATE GROSS INTERNAL AREA
2547.7 SQ FT / 236.0 SQ M

| Energy Efficiency Rating | | |
|--|----------------------------|-----------|
| | Current | Potential |
| <i>Very energy efficient - lower running costs</i> | | |
| (92 plus) A | | |
| (81-91) B | | |
| (69-80) C | 75 | 80 |
| (55-68) D | | |
| (39-54) E | | |
| (21-38) F | | |
| (1-20) G | | |
| <i>Not energy efficient - higher running costs</i> | | |
| England & Wales | EU Directive 2002/91/EC | |

Council Tax Band H EPC Rating C



301 Michelin House 81 Fulham road
London
Greater London
SW3 6RD
07920 257649
fayeel@eson2.co.uk
www.eson2.co.uk