

RICE+ROMAN



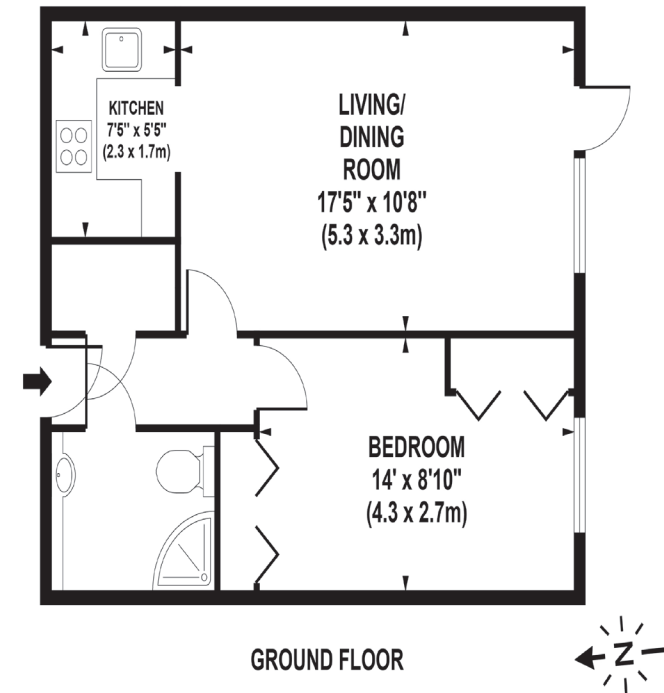
Kathleen Godfree Court

SW19 8LB



## Living Area

Kathleen Godfree Court, Queens Road, London, SW19 8LB



**APPROX. GROSS INTERNAL FLOOR AREA 459 SQ FT / 43 SQ M**

Whilst every attempt has been made to ensure the accuracy of the floorplan contained here, measurements of doors, windows and rooms are approximate and no responsibility is taken for any error omission or mis-statement. These plans are for representation only.

- Exclusively For Those Aged 60+
- Ground Floor Apartment
- Direct Access To Private Patio
- Views Over Communal Gardens
- Resident & Visitor Parking
- On-site Management

**Price:** £235,000.00  
**Service Charge:** £3,202.44 PA  
**Ground Rent:** £577.64 PA  
**Other Charges:** N/A  
**Lease Length:** 89 Years  
**Tenure:** Leasehold

**EPC Rating:** C

For more information  
please contact:

Rice & Roman  
 T: 01344 981246  
 E: info@riceandroman.co.uk  
 Lynwood Village, SL50FJ  
 www.riceandroman.co.uk

**RICE +  
 ROMAN**

Agents Notices - These property details are set out as a general outline only and do not constitute any part of an Offer or Contract. Any services, equipment, fittings or central heating systems have not been tested and no warranty is given or implied that these are in working order. Buyers are advised to obtain verification from their solicitor or surveyor. Fixtures, fittings and other items are not included unless specifically described. All measurements, distances and areas are approximate and for guidance only. Room measurements are taken to be the nearest 10cm and prospective buyers are advised to check these for any particular purpose, e.g. fitted carpets and furniture. This material is protected by the laws of copyright. The owner of the copyright is Countrywide Estate Agents. This property sheet forms part of our database rights and copyright laws. No unauthorised copying or distribution without permission.