



BROUGHAM COTTAGE, MALVERN PRIORS, MALVERN PLACE, CHELTENHAM, GL50 2JL

A PRETTY SPECIAL 2 BEDROOM MEWS COTTAGE SET IN A WALLED AND GATED DEVELOPMENT IN LANSDOWN

ACCOMMODATION:

The property offers a spacious open plan ground floor with high specification kitchen with integrated appliances, bathroom and en suite and private terrace.

PARKING:

1 space allocated. Visitor spaces available

ADDITIONAL:

Gas central heating
Double glazed windows.
Unfurnished

INCLUDED:

Integrated fridge/freezer,
Dishwasher
Washing machine.
Gas hob
Electric oven.

TERM

No pets. No smokers. No sharers.

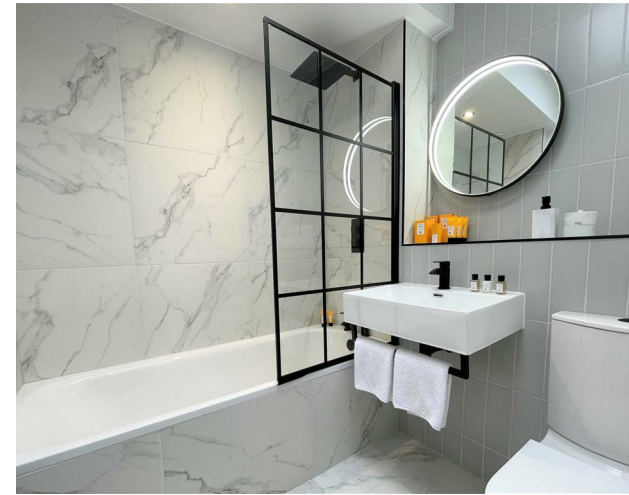
VIEWING AND SHOWING TIMES:

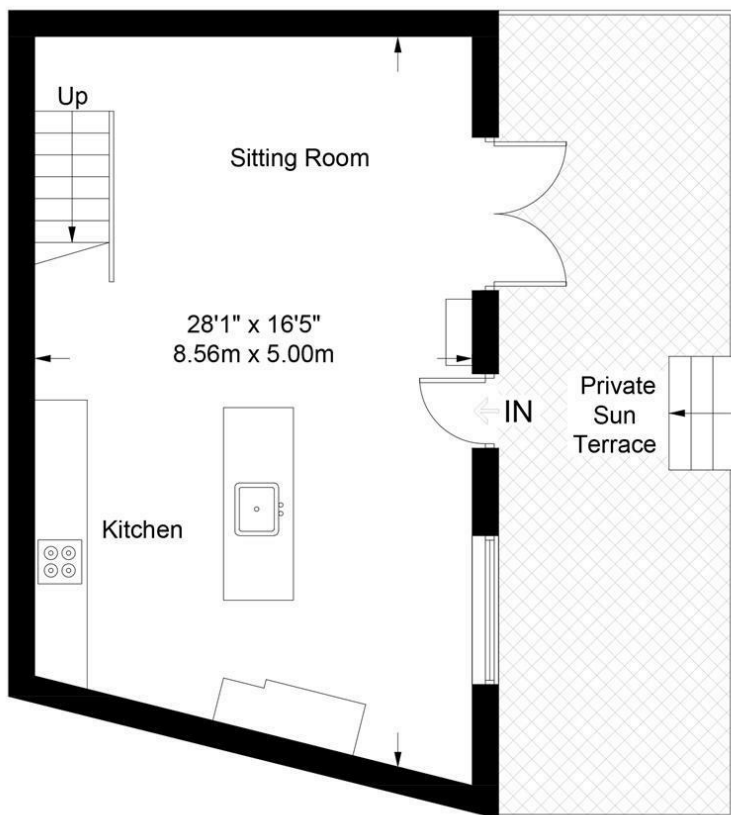
Read Maurice show our rental property during weekdays only. No application may be made without a physical viewing of the property. For certain properties block viewings will be offered and you are advised to attend at the earliest opportunity if this property is of interest to you.

GENERAL:

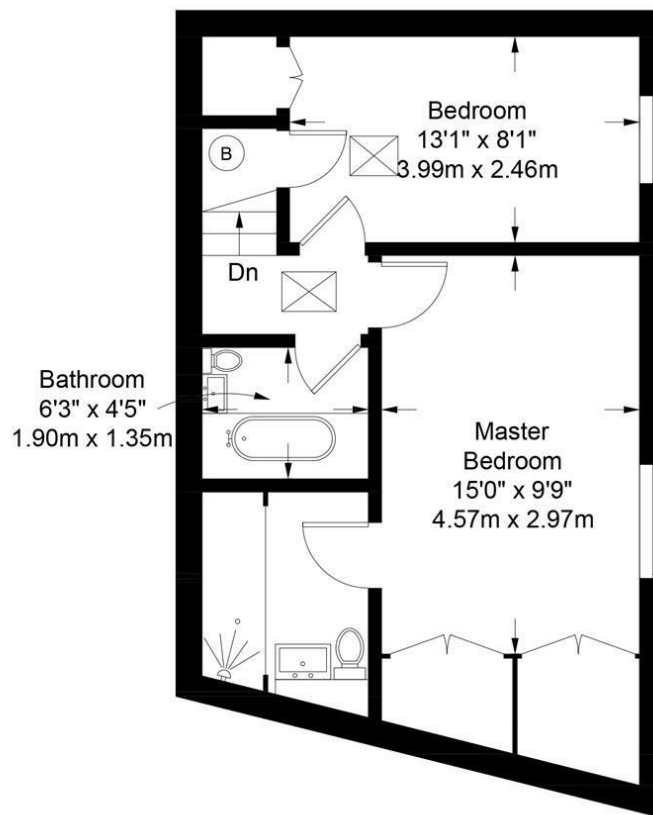
Mains services are believed to be connected







GROUND FLOOR



FIRST FLOOR

Approximate Gross Internal Area = 857 sq ft / 79.6 sq m

Illustration for identification purposes only, measurements are approximate and are not to scale.
Please check all details before making any decisions reliant upon them.
Copyright Read Maurice. (ID956148)



EPC: Band D

Rating: 60

Council Tax: E

Area: 857.00 sq ft

readmaurice 

48 Andover Road, Cheltenham, GL50 2TL

Tel: 01242 241122

Email: post@readmaurice.co.uk

www.readmaurice.co.uk

BROUGHAM COTTAGE, MALVERN PRIORS, MALVERN PLACE, CHELTENHAM, GL50 2JL

These particulars, whilst believed to be accurate are set out as a general outline only for guidance and do not constitute any part of an offer or contract. Intending purchasers should not rely on them as statements or representation of fact, but must satisfy themselves by inspection or otherwise as to their accuracy. We have not carried out a detailed survey nor tested the services, appliances and specific fittings. Room sizes should not be relied upon for carpets and furnishings. The measurements given are approximate. No person in this firm's employment has the authority to make or give any representation or warranty in respect of the property. PRN: 18497708 - Date of printing 9th February 2026