



## New Cross Central, Addington Street, Manchester

£2,400 PCM

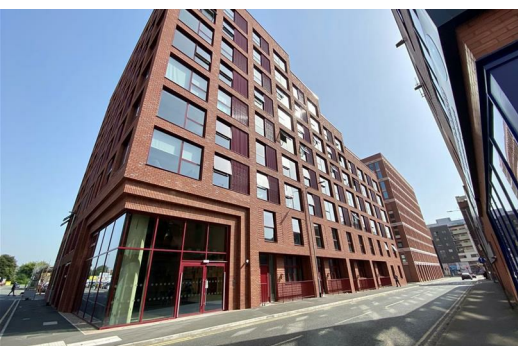
This is an excellent opportunity to rent a stunning three-bedroom townhouse-style apartment in the highly sought-after New Cross Central development. Offering a chic and comfortable interior, generous living space and a contemporary open-plan layout, this beautiful home perfectly combines modern city living with character and style.

Set across multiple levels, the apartment boasts bright and spacious accommodation throughout, featuring a stylish open-plan living, dining and kitchen area designed for both relaxing and entertaining. The property benefits from two modern bathrooms, including an en-suite to the principal bedroom, as well as a convenient downstairs W/C, providing practicality for families and professionals alike.

Finished to a high standard, the apartment showcases contemporary décor, quality fixtures and fittings, and a welcoming atmosphere that makes it easy to feel at home.

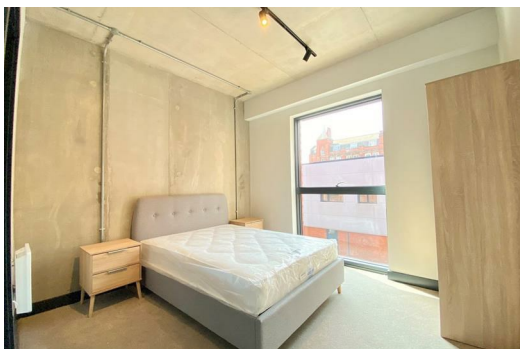
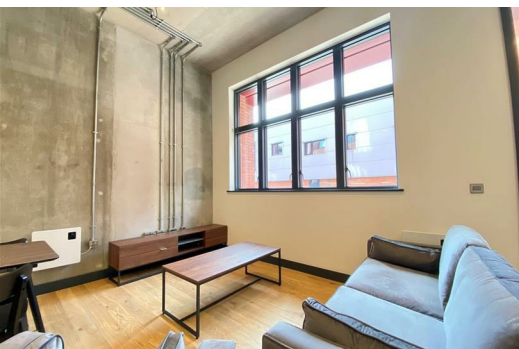
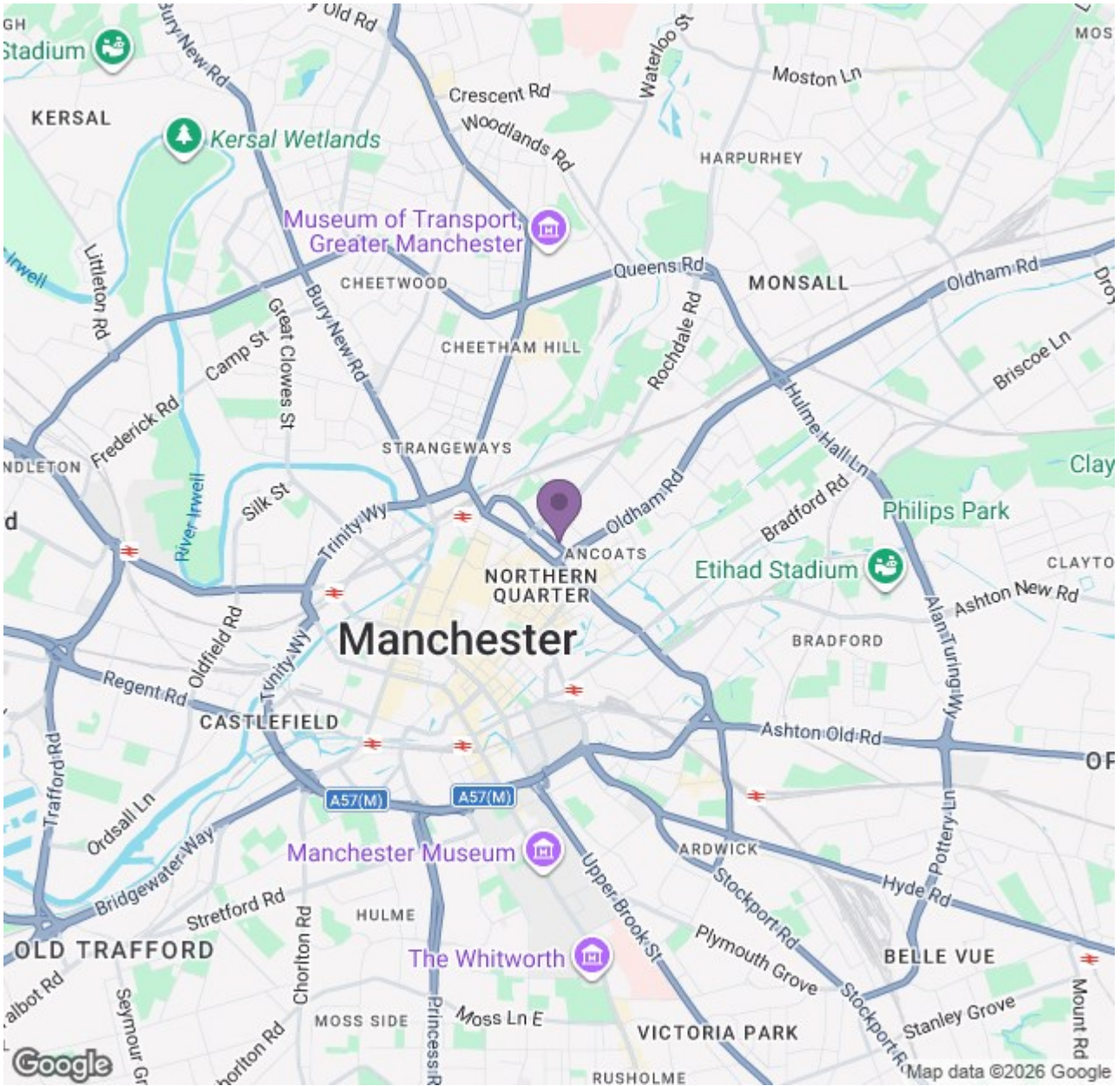
Located in the heart of New Cross, one of Manchester's most exciting and evolving neighbourhoods, residents enjoy the perfect balance between city-centre convenience and a thriving community feel. Just a short walk from the vibrant Northern Quarter, you'll have an exceptional selection of independent cafés, restaurants, bars and shops right on your doorstep. Manchester Victoria Station, Piccadilly Station, the Arndale Centre and key transport links are all within easy reach, making commuting and exploring the city effortless.

Combining stylish interiors, spacious accommodation and an unbeatable location, this exceptional townhouse-style apartment is expected to attract significant interest. Early viewing is highly recommended.



# Ascend

Built on higher standards



Energy Efficiency Rating		Environmental Impact (CO <sub>2</sub> ) Rating	
Current	Target	Current	Target
A	A	A	A
B	B	B	B
C	C	C	C
D	D	D	D
E	E	E	E
F	F	F	F
G	G	G	G

Energy Efficiency Rating: 75 / 75  
 Environmental Impact (CO<sub>2</sub>) Rating: A / A

# Ascend

Built on higher standards