



EARLS COURT ROAD LONDON W8  
£2,899 PER MONTH AVAILABLE 21/05/2026

Hamptons  
THE HOME EXPERTS

# { THE PARTICULARS

Earls Court Road London W8

£2,899 Per Month  
Furnished

 2 Bedrooms  
 1 Bathroom  
 1 Reception

## Features

- Two Bedrooms, - One Bathroom, -  
Naturally bright, - Close to Earls Court  
Tube, - Furnished/flexible, - Top Floor

## Council Tax

Council Tax Band F

Hamptons  
8 Hornton Street  
Kensington, London, W8 4NW  
020 7937 9372  
KensingtonLettings@hamptons.co.uk  
www.hamptons.co.uk

# { A BRIGHT TWO BEDROOM APARTMENT WITH LOVELY VIEWS

## The Property

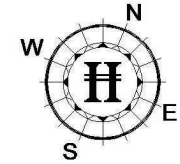
A bright two bedroom apartment situated on the top floor of this period conversion, close to Kensington High Street and Earls Court. The apartment offer a spacious living room with space for dining, separate kitchen with breakfast bar, large principal bedroom with built-in wardrobes, second good size bedroom and bathroom. Furniture flexible. \*\*Furniture differs to photos\*\*

## Location

Close to Earls Court Road tube station (Piccadilly and District lines) and moments from the A4 for routes into and out of London.

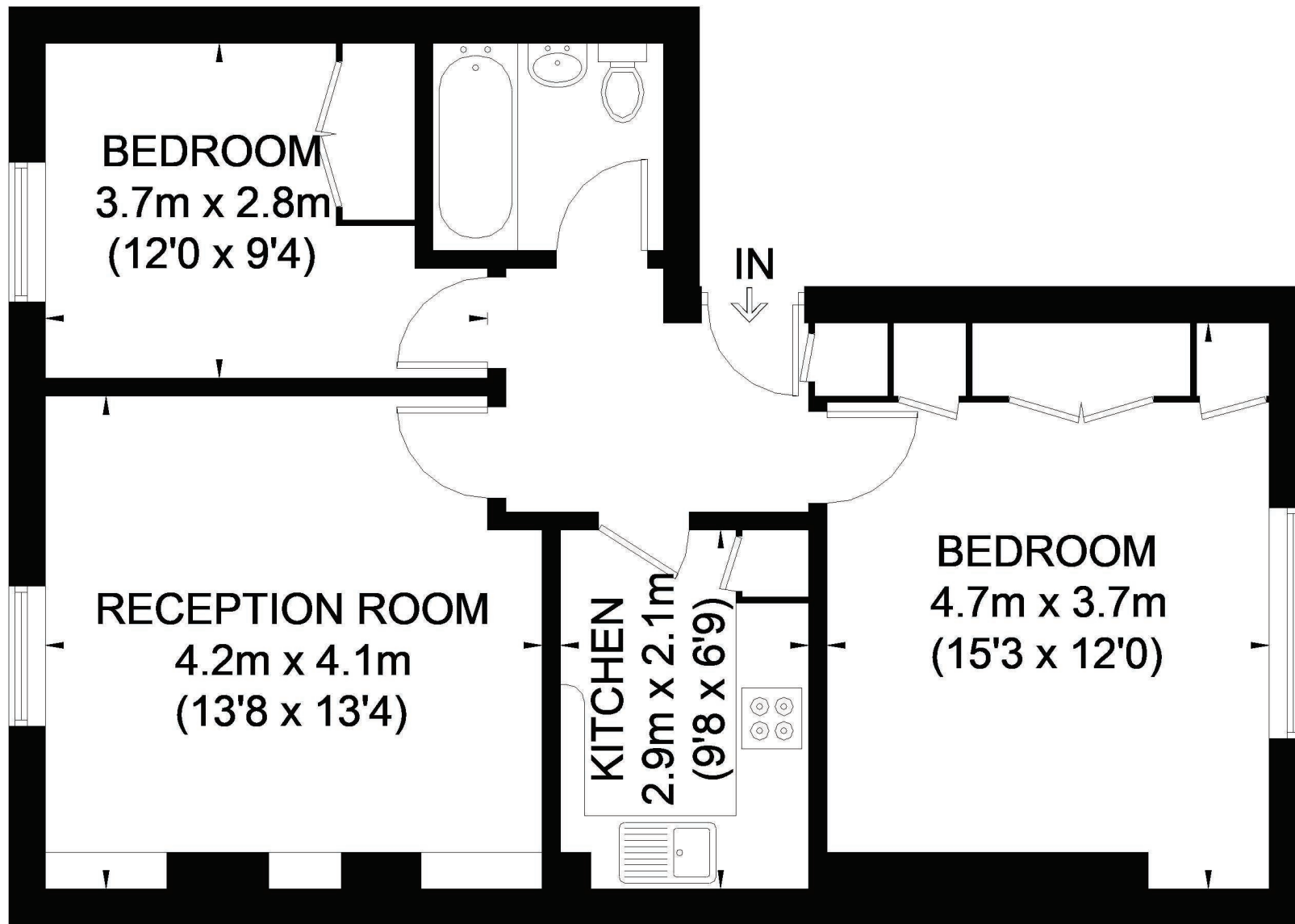
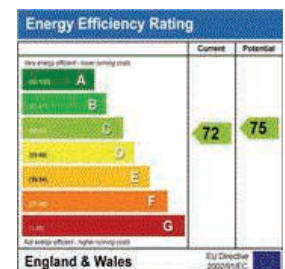


# EARLS COURT ROAD



APPROXIMATE GROSS INTERNAL AREA  
633 SQ. FT. (58.8 SQ. M.)

This plan is for layout guidance only. Not drawn to scale unless stated. Windows and door openings are approximate. Whilst every care is taken in the preparation of this plan, please check all dimensions, shapes and compass bearings before making any decisions reliant upon them. Please be advised that Hamptons International / our agents have not seen or reviewed any building regulations or planning permission in relation to works carried out to the property (ID173226)



## THIRD FLOOR

### For Clarification

We wish to inform prospective tenants that we have prepared these particulars as a general guide and they have been confirmed as accurate by the landlord. We have not verified permissions, nor carried out a survey, tested the services, appliances and specific fittings. Room sizes are approximate and measurement figures rounded: they are taken between internal wall surfaces and therefore include cupboards/shelves, etc. Accordingly, they should not be relied upon for

carpets and furnishings. It should also be noted that all fixtures and fittings, carpeted, curtains/blinds, kitchen equipment and garden statuary, whether fitted or not, are deemed removable by the landlord unless specifically itemised with these particulars. Please enquire in office or on our website for details on holding deposit and tenancy deposit figures.

