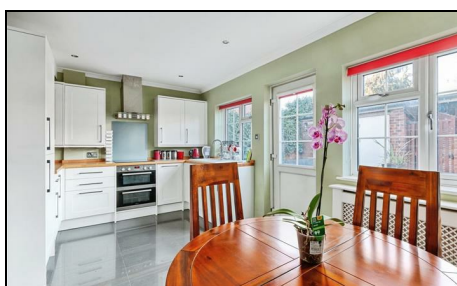
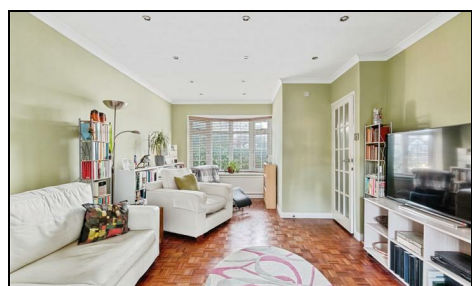
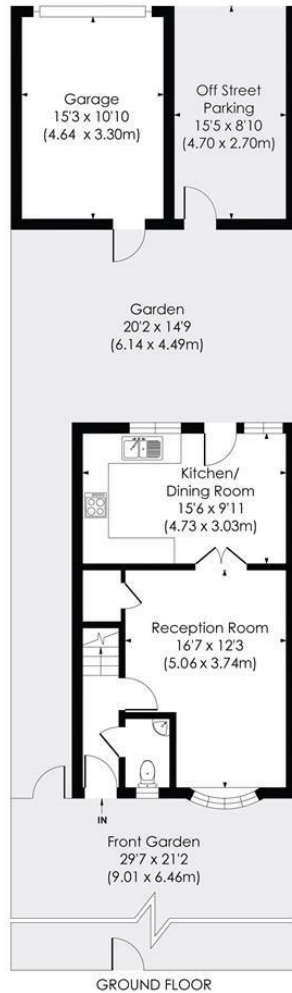


Grand Drive Raynes Park, SW20 9EB

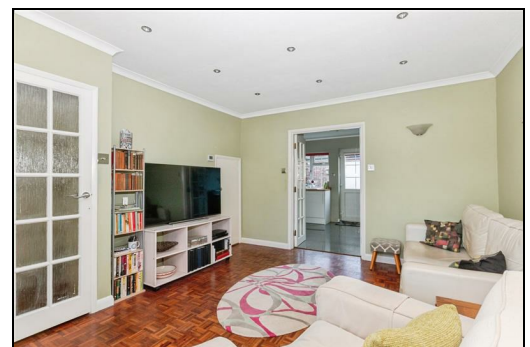
£700,000 Freehold



This superb THREE BEDROOM, Neo-Georgian, End of Terrace House has a low maintenance West Facing Garden with side facing garden, a detached garage, an allocated carport to the rear and a lovely open plan kitchen/dining room. Ideally located for Raynes Park High Street and Station (0.4 Miles) and access to the open space of Cannon Hill Common. There is also a spacious reception room, a downstairs W.C, three bedrooms, loft space and modern four piece family bathroom. An excellent first/second time purchase or downsize move.



GRAND DRIVE, SW20
 Approx. Gross Internal Floor Area
845 Sq. ft/78.49 Sq. m
 (Excluding Garage)



pixangle PROPERTY MARKETING
 © Pixangle Property Marketing Ltd. info@pixangle.com Tel: 0208 870 2118
 This floor plan has been prepared for the purpose of illustration only in accordance with the latest RICS code of measuring practice and is not to scale. All measurements and areas are approximate and whilst every effort has been made to ensure the accuracy of the plan contained here, no responsibility is taken for any error, omission or misstatement.

- Three Bedroom - Neo-Georgian End Of Terrace House
- West facing Low Maintenance Rear Garden With Side Access
- Detached Garage And Carport To Rear
- 0.4 Miles To Raynes Park Station And High Street
- Easy Access To Cannon Hill Common
- Open Plan Kitchen/Dining Room
- Spacious Reception Room
- Downstair W.C And Loft Space
- EPC - C
- Council Tax Band - E

Energy Efficiency Rating		Current	Potential
Very energy efficient - lower running costs			
(92 plus)	A		
(81-91)	B		
(69-80)	C		
(55-68)	D	70	79
(39-54)	E		
(21-38)	F		
(1-20)	G		
Not energy efficient - higher running costs			
England & Wales		EU Directive 2002/91/EC	

For Free Mortgage Quote and Best Mortgage Rates, call Ellisons Mortgage Advisor on 0208 944 9595



Although these particulars are believed to be correct, their accuracy is not guaranteed and they do not form part of any contract.

Celebrating 30 years of successful Sales and Lettings in Merton

