



P R I M E R E S I D E N T I A L

P R E S E N T S

Regents Drive, Woodford Green



elliott E | J james

Regents Drive, Woodford Green



Nestled in the prestigious area of Regents Drive, Woodford Green, this remarkable property offers an exceptional blend of modern living and spacious comfort. Set on a private road, the residence boasts an impressive six bedrooms, making it ideal for families or those seeking ample space for guests.

Upon entering, you will be greeted by two generously sized reception rooms, perfect for entertaining or relaxing with loved ones. The property features four well-appointed bathrooms, ensuring convenience for all occupants. The modern design throughout enhances the sense of space and light, creating a welcoming atmosphere.

Security is paramount in this exclusive location, with CCTV and 24-hour security guards providing peace of mind for residents. The property is chain-free, allowing for a smooth and efficient purchase process.

Additionally, the double garage offers ample storage and parking space, catering to the needs of a busy household. With its combination of luxury, security, and modern amenities, this property is a rare find in Woodford Green. Do not miss the opportunity to make this stunning home your own.



With over 20 years of personal local experience in both independent and corporate agencies it has been my passion to bring seamless integration of the latest property technology to our agency. Our unique Partnership sets us apart as market leaders.



An unrestricted fully immersive walkthrough is available in our EIJ Business Lounge by arrangement. Restricted walkthrough access is available on our website through your smartphone or desktop.

Elliott Lawlor **MNAEA & MARLA**
contact@ejpr.co.uk
0208 0165 333

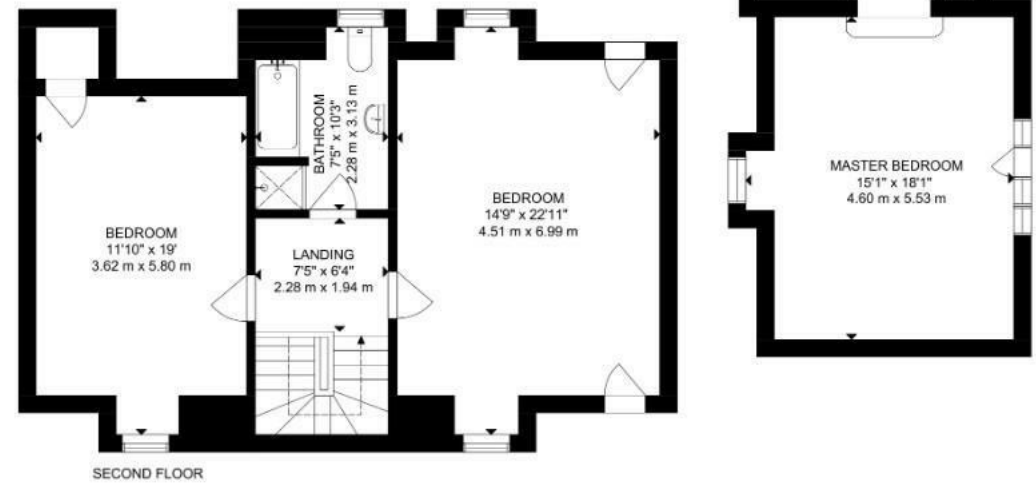
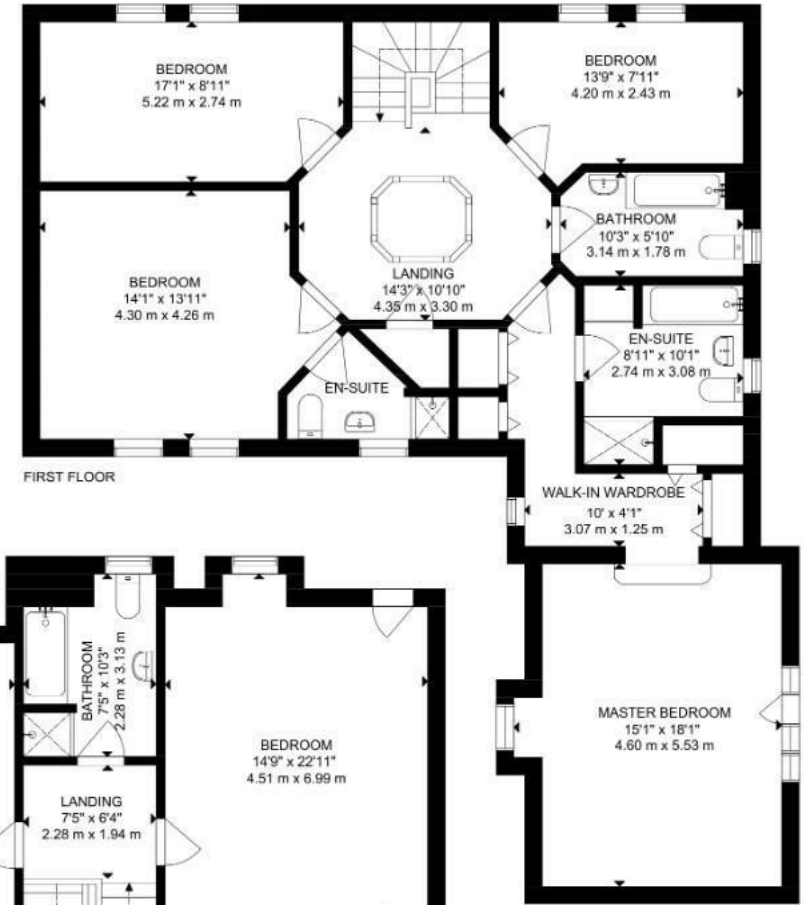
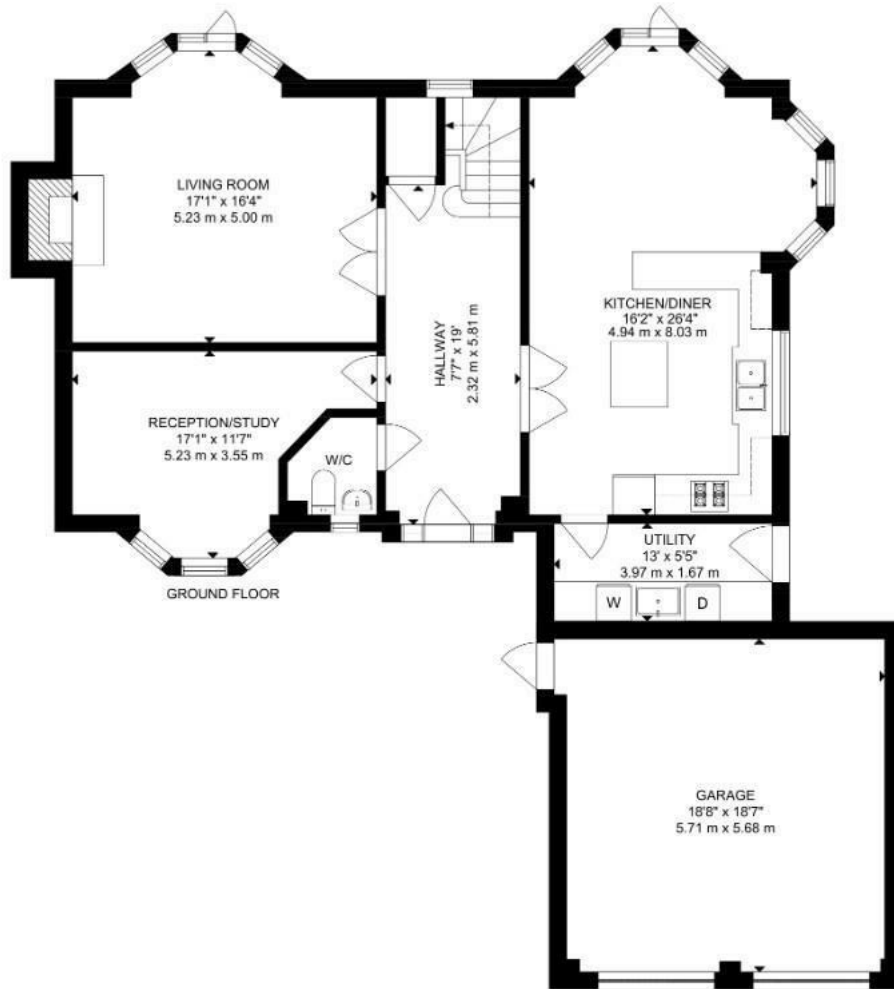
N
E
E
D

T
O

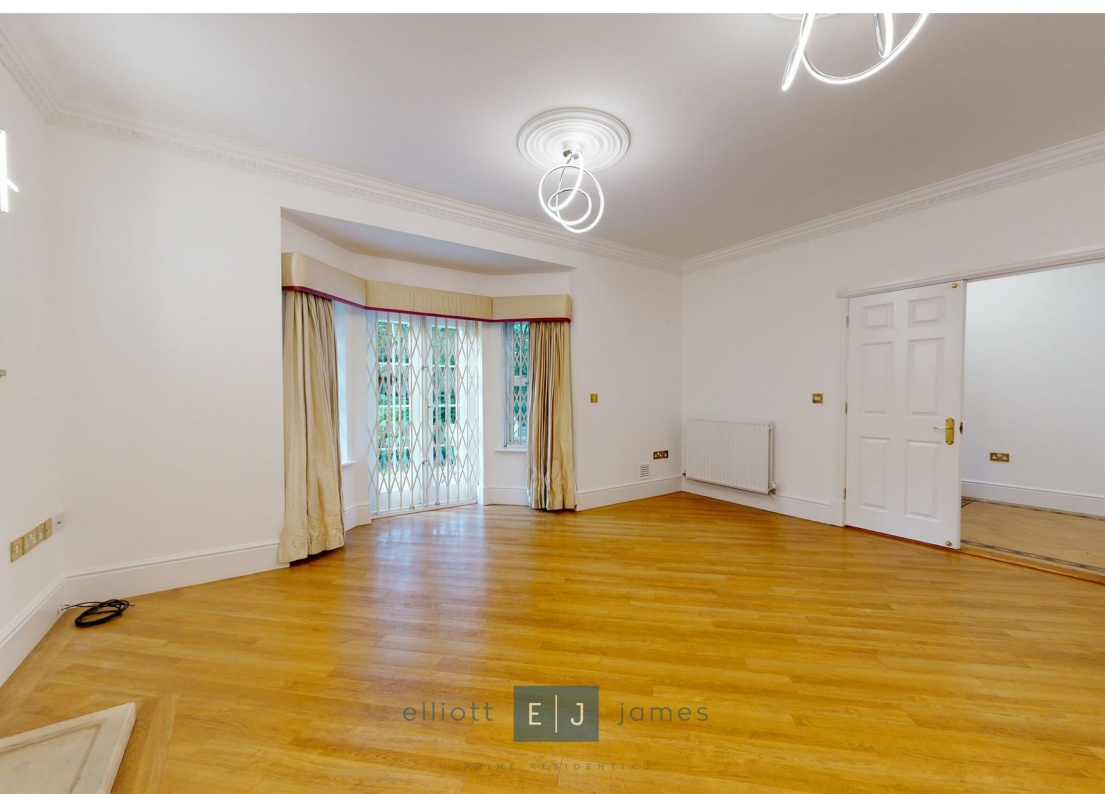
K
N
O
W

Sqft 3291sqft	Type House - Detached	Style New Home
Bedrooms 6	Receptions 2	Bathrooms 5
Tenure Freehold	Local Authority Redbridge	Tax Band H

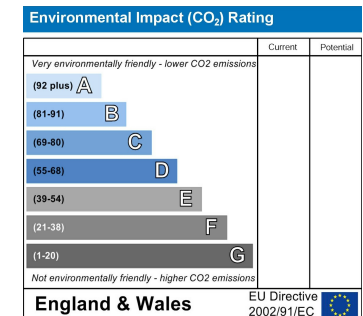
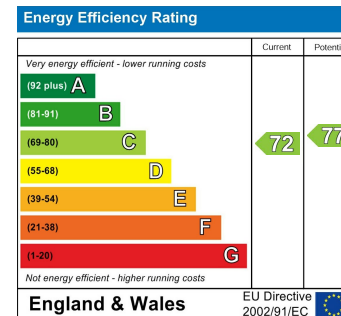
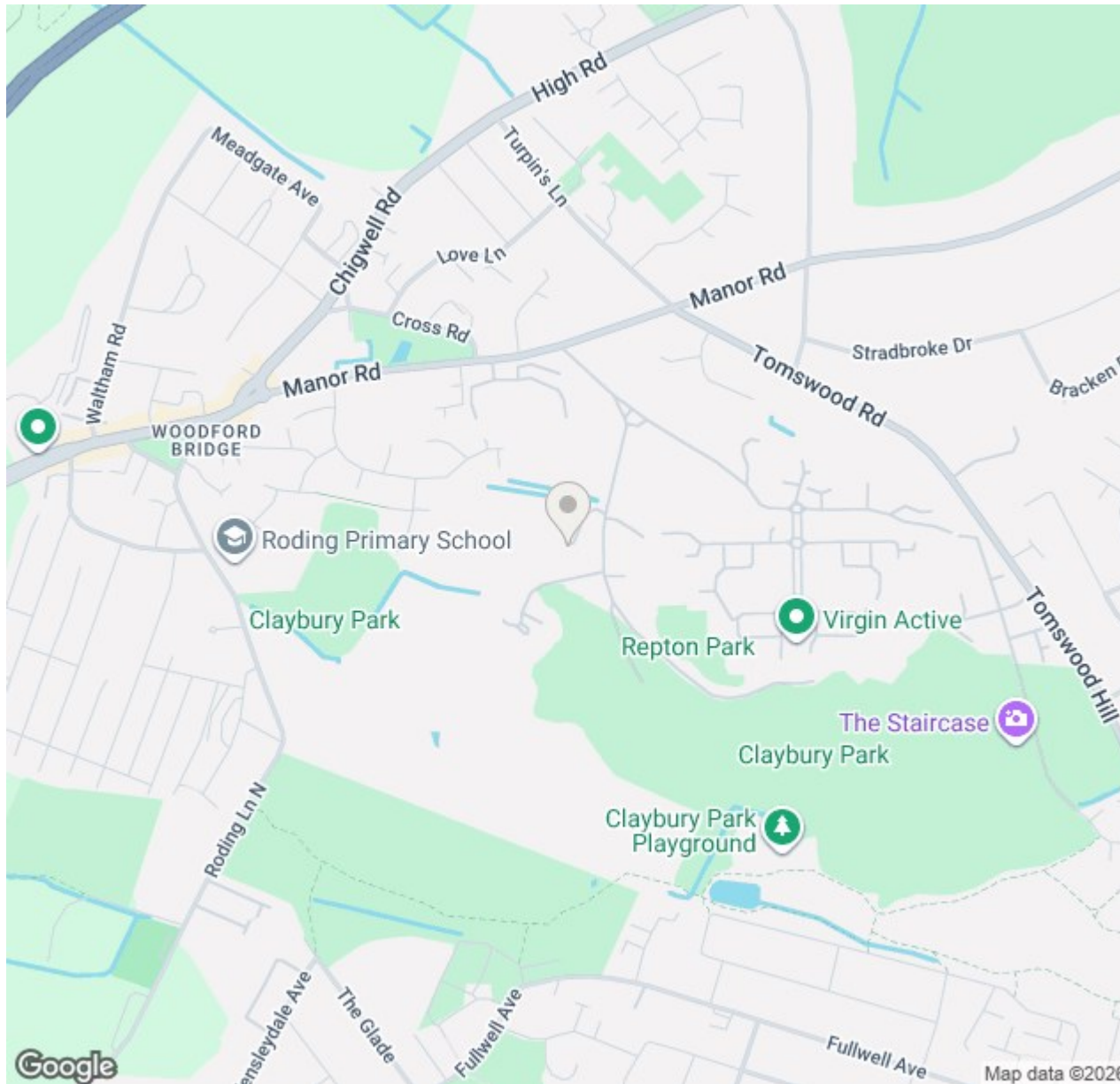
PLANS



GROSS INTERNAL AREA
 GROUND FLOOR: 1054 SQ FT, 96 m², FIRST FLOOR: 1259 SQ FT, 117 m²,
 SECOND FLOOR: 645 SQ FT, 60 m², GARAGE: 333 SQ FT, 31 m²
 TOTAL: 3291 SQ FT, 300 m²
 SIZE AND DIMENSIONS ARE APPROXIMATE, ACTUAL MAY VARY



MAP & EPC



elliott  james

165 | High Road | Loughton | IG10 4LF

Contact Us : 0208 0165 333 | contact@ejpr.co.uk

Follow us on social media | Search 'ejpr165'



These particulars have been prepared with approximate measurements in good faith by Elliott James – Prime Residential with the assistance of the vendor. The intention is to provide a fair and accurate guide to the property. These details do not constitute or form any part of an offer or contract. All interested parties must verify for themselves the accuracy of the information provided. The structural condition of the property or the condition of the heating, plumbing or electrical installations or any appliances have not been checked or tested and suitable investigations by interested parties should be conducted prior to purchase.