



Farley Court

Allsop Place, NW1

Asking Price £850,000

Sole Agent. Located opposite Madame Tussauds is this bright two-bedroom apartment (787 sq. ft. / 73 sq. m.) situated on the second floor of this portered building.

The property benefits from a 19ft reception room, two double bedrooms, family bathroom and separate guest cloakroom. Further benefits include wood flooring, ample storage, secondary glazing, smart communal area, communal heating and hot water and two passenger lifts.

Farley Court is just moments away from Baker Street Underground station and within easy reach of an excellent selection of shops, bars and restaurants in Marylebone and the West End, whilst the green open spaces of Regent's Park are moments away.

CHESTERTONS



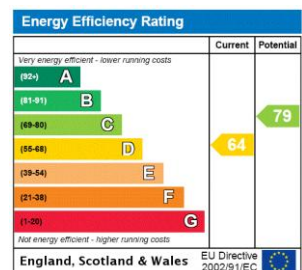
Farley Court

Allsop Place, NW1

- 2 Bedroom Apartment
- 123 Year Leasehold
- 787 sq. ft.
- 19ft Reception Room
- Porter
- Lift
- Close to Tube



Tenure: Leasehold
Service Charge: £8,828pa (Includes £2,200pa into the sinking fund).
Ground Rent: £0
Local Authority: Westminster
Council Tax Band: F

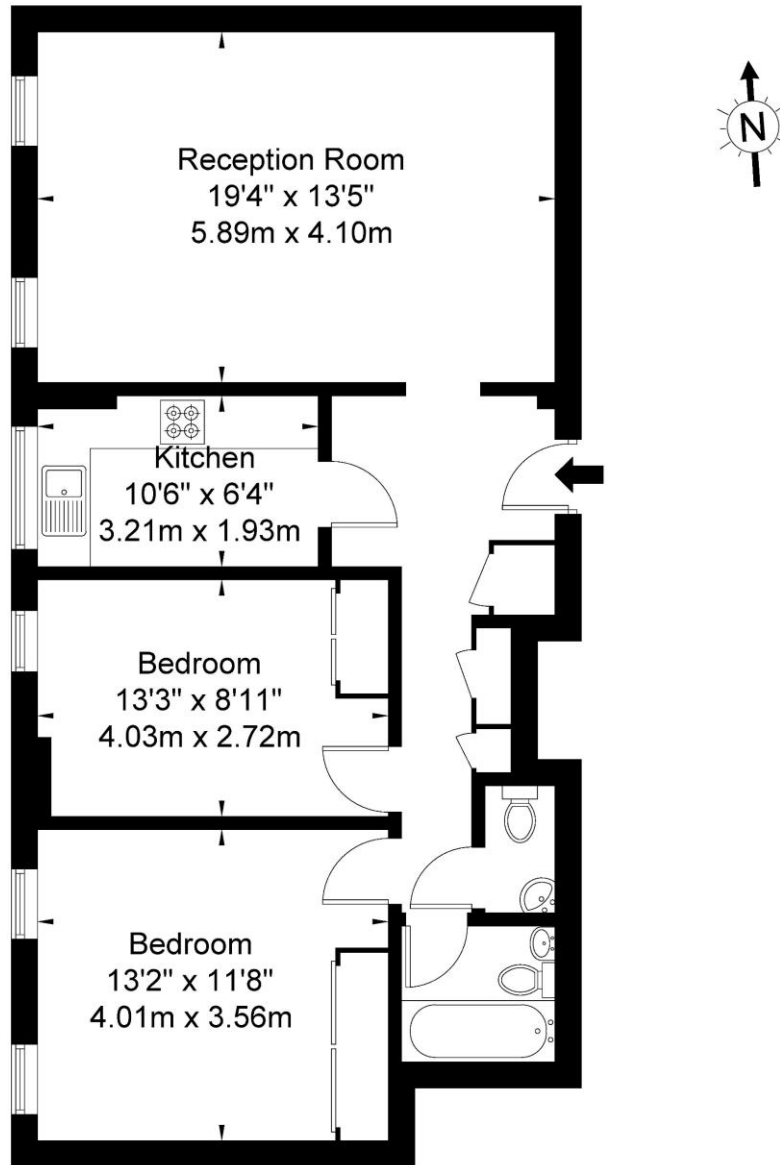


Chestertons St John's Wood Sales

105 St. John's Wood Terrace
 London
 NW8 6PL
 stjohnswood@chestertons.co.uk
 020 3040 8611
 chestertons.co.uk

Farley Court Allsop Place, NW1 5LG

Approx Gross Internal Area = 73.2 sq m / 787 sq ft



Second Floor

Ref

Copyright

**BLEU
PLAN**

The Floor plan is not to scale and measurements and areas shown are approximate and therefore should be used for illustrative purposes only. The plan has been prepared in accordance with the RICS code of Measuring Practice and whilst we have confidence in the information produced it must not be relied on. If there is any aspect of particular importance, you should carry out or commission your own inspection of the property.

Copyright @ BLEUPLAN

