



LANCASTER GATE, W2

£675,000

Lots of natural light
Two reception rooms
Balcony
Fifth floor
Floor to ceiling windows
Hyde Park

@marshandparsons
marshandparsons.co.uk

MARSH &
PARSONS



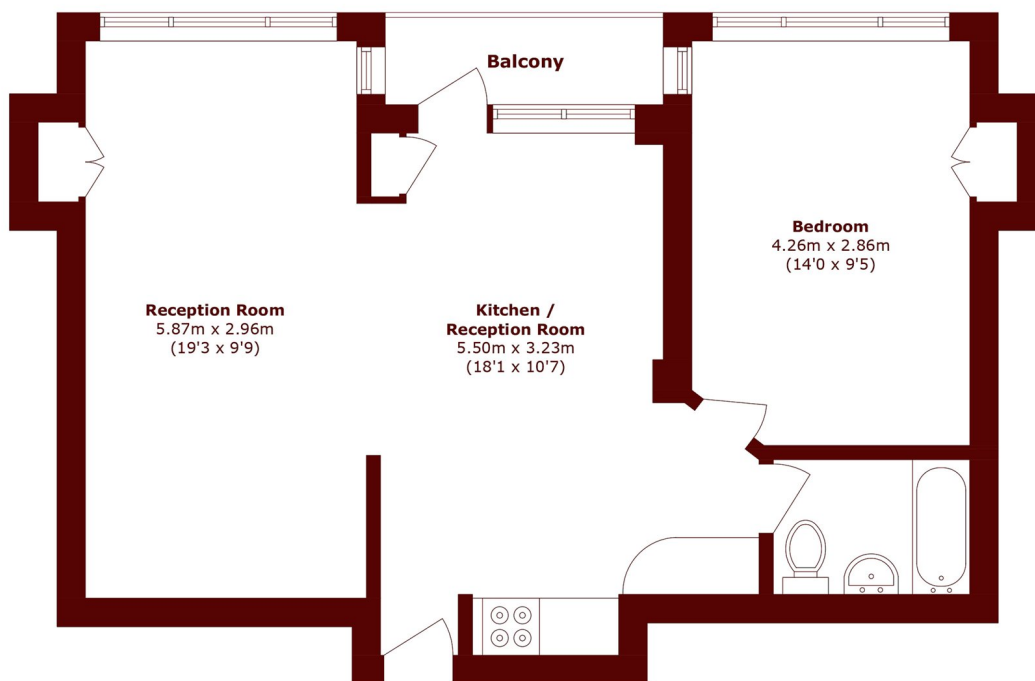
ABOUT THE PROPERTY

Situated on prestigious Lancaster Gate, this bright fifth floor apartment sits within an elegant terrace of stucco fronted Victorian buildings, just 0.1 miles from Hyde Park. The property offers a spacious reception room with large windows, a dining area, and a south-facing balcony, filling the space with natural light. Set within Heron Court, a well maintained development with a marble finished entrance, the property combines character and convenience in a prime central London location, in the heart of a fashionable district, with the West End's shops, restaurants, and nightlife on your doorstep.

The property is located in one of London's most desirable and exclusive areas, just off Bayswater Road and



STEP INSIDE LANCASTER GATE



Fifth Floor

Total area (approx.): 53.5 sq. m (575.9 sq. ft)

Balcony area (approx.): 3.2 sq. m (34.4 sq. ft)

Notting Hill
020 7313 2890

Energy Rating: C We aim to make our particulars both accurate and reliable. However, they are not guaranteed; nor do they form part of an offer or contract. If you require clarification on any points then please contact us, especially if you're traveling some distance to view. Please note that appliances and heating systems have not been tested and therefore no warranties can be given as to their good working order

**MARSH &
PARSONS**