



Guide Price
£195,000

**Share of
Freehold**

1x  1x  1x 

**Garden Flat, Clarendon
Road, Southsea,
Hampshire, PO4**

OVER 60?

Secure this property
for up to **59% less!**

cubitt & west
Helping you move forwards



Main features

- Large private rear garden
- Allocated parking space
- Close proximity to seafront
- Ideal home for first time buyers and investors
- Central Southsea location

Accommodation

GROUND FLOOR

Entrance Hallway

Lounge/Diner: 25'10 x 12'4 (7.88m x 3.76m)

Kitchen: 13'8 x 5'10 (4.17m x 1.78m)

Bedroom: 11'6 x 9'6 (3.51m x 2.90m)

Bathroom

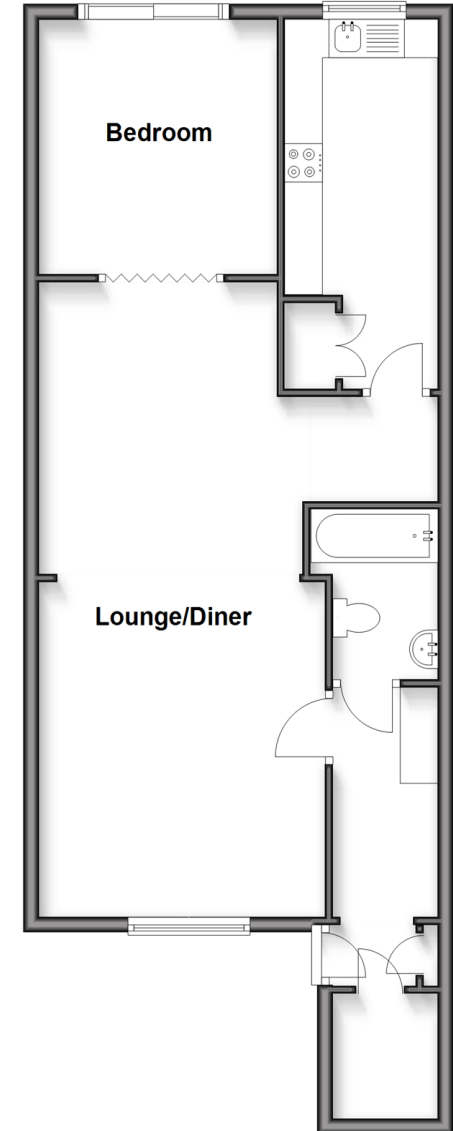
OUTSIDE

Rear Garden

Allocated Parking Space

Ground Floor

Approx. 65.4 sq. metres (704.2 sq. feet)



Call Southsea - 023 9229 6396 ■ cubittandwest.co.uk

- Legal advice should be taken to verify fixtures/fittings, planning, alterations and/or lease details
- Appliances & services are untested, dimensions are approximate and floor plans are not to scale
- Through a Homewise Home For Life Plan people aged 60+ can secure this property for up to 50% less, by purchasing a Lifetime Lease.



42227481/20251006/JT/VB