



## BALHAM HIGH ROAD, SW17

£650,000

- Two double bedrooms
- Two bathrooms
- Private balcony
- Modern development
- Close to transport links
- Energy rating: B





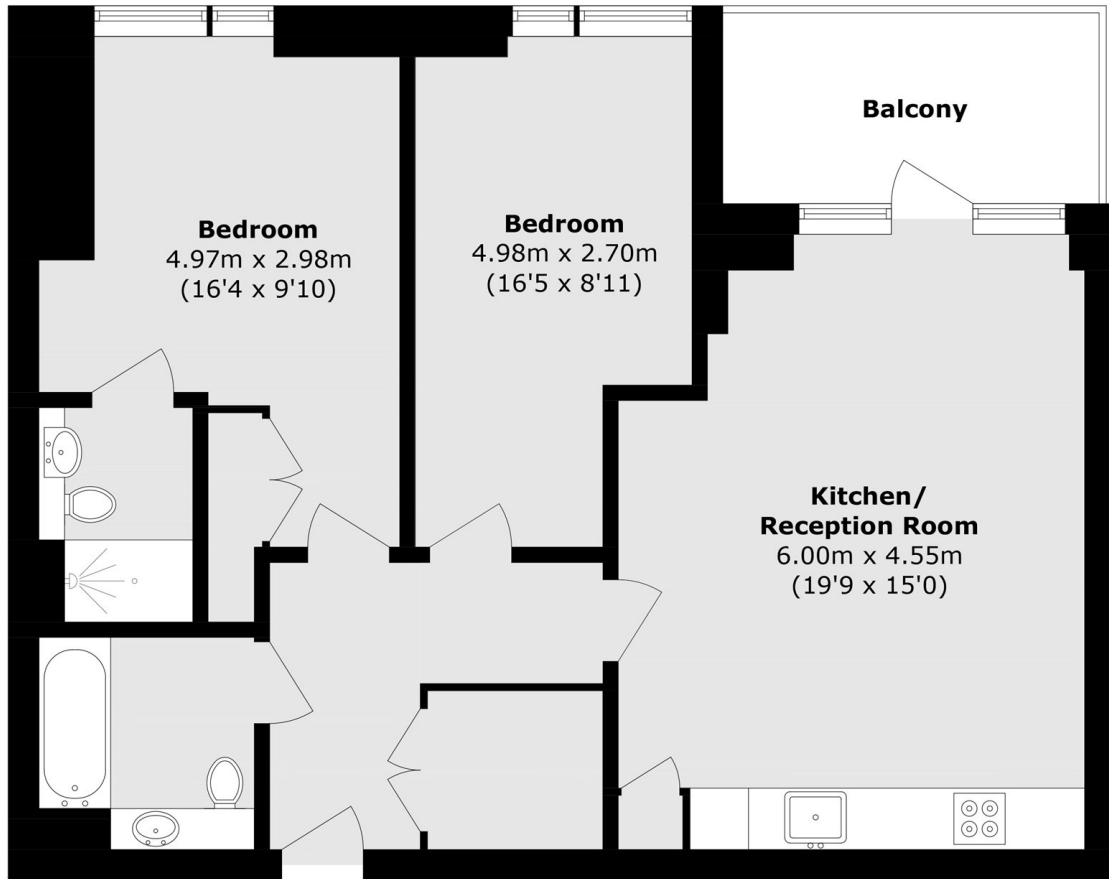
## ABOUT THE HOME

An immaculate two double bedroom, two bathroom apartment located in Balham. This outstanding property comes finished to a high specification, open-plan living/kitchen, ample storage throughout and a large private balcony. The property also has access to a well-maintained communal garden.

Situated in the centre of Balham, this new development is well positioned for easy access to Balham, Tooting Bec and Wandsworth Common stations offering mainline and underground services. The green open spaces of Wandsworth Common and Tooting Bec Common are also close by, as are the shops, bars and restaurants that the area has to offer.







Total area (approx.): 73.5 sq. m (791.1 sq. ft)

Balcony (approx.): 6.9 sq. m (73.9 sq. ft)

#### JACKSONS BALHAM

8-11 Balham Station Road,  
London, SW12 9SG  
Sales: 020 8675 6555  
Lettings: 020 8675 6565

Energy Rating: We aim to make our particulars both accurate and reliable. However they are not guaranteed; nor do they form part of an offer or contract. If you require clarification on any points then please contact us, especially if you're traveling some distance to view. Please note that appliances and heating systems have not been tested and therefore no warranties can be given as to their good working order.