



## Brougham Road, W3

£575,000



- Two Bedrooms
- Garden
- Ensuite Plus Bathroom
- Natural Light
- Good location
- Residents Permit Parking



## ABOUT THE PROPERTY

A bright and well-presented two-bedroom flat, offering both a family bathroom and an ensuite. The property enjoys an abundance of natural light throughout and has been maintained in good condition. The accommodation features a spacious open-plan kitchen and living area, which flows seamlessly onto a private garden an ideal space for relaxing or entertaining. The garden is generous in size and offers excellent potential to personalise the space further. Situated in a desirable location with easy access to local amenities and transport links, this flat combines comfort, practicality, and opportunity, making it a perfect home for a first-time buyer or someone looking to add their own touch.

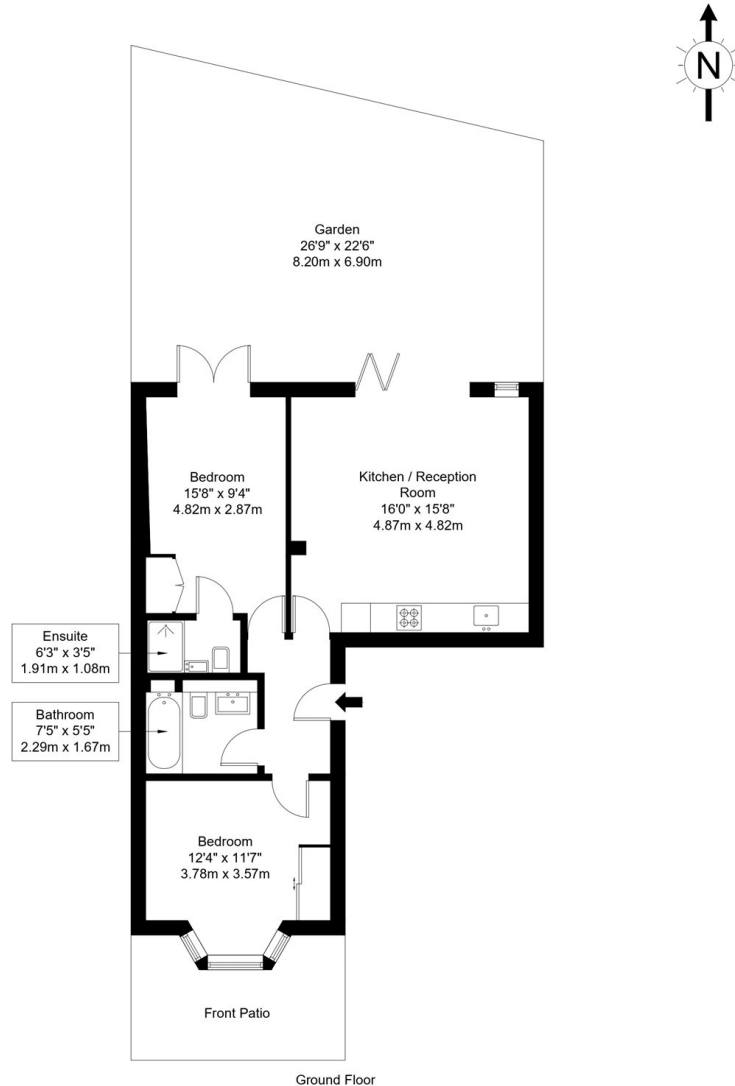


Brougham Road is a quiet residential street located in the popular Acton W3 area, close to a wide range of local amenities. The property is well positioned for excellent transport links, including Acton Main Line (Elizabeth Line) and Acton Central (Overground), providing easy access into Central London. Nearby shops, cafés, parks and schools make this a convenient and desirable location for families and professionals alike.



## Brougham Road, W3 6JD

Approx Gross Internal Area = 61.15 sq m / 658 sq ft



Ref :

Copyright **BLEU  
PLAN**

The Floor plan is not to scale and measurements and areas shown are approximate and therefore should be used for illustrative purposes only. The plan has been prepared in accordance with the RICS code of Measuring Practice and whilst we have confidence in the information produced it must not be relied on. Maximum lengths and widths are represented on the floor plan. If there is any aspect of particular importance, you should carry out or commission your own inspection of the property.

Copyright @ BLEUPLAN

### Marsh & Parsons Askew Road

120 Askew Road, London,  
W12 9BL  
020 8102 0123