



**Goldsmith Road, Ipswich, IP1 6JD**

**welcome to**

## **Goldsmith Road, Ipswich**

This well-presented, semi-detached home benefits from three bedrooms, a ground floor bathroom, off street parking, a paved rear garden and NO ONWARD CHAIN!!

### **Entrance Porch**

Double glazed window to the side and carpet flooring.

### **Entrance Hall**

Carpet flooring and one radiator.

### **Ground Floor Bathroom**

Tiled effect flooring, two double glazed windows to the side, tiled walls, chrome heated towel rail, a shower with glass enclosure, low level WC and wash hand basin.

### **Lounge**

Wood flooring, two radiators, two double glazed windows to the front and an understairs storage cupboard.

### **Kitchen**

Tiled effect flooring, two double glazed windows to the rear, a door to the garden, eye and base level units in wood effect with marble effect worktop surfaces, tiled splashback, space for all appliances, an integrated oven with gas hob and extractor hood, one radiator and a stainless steel sink plus drainer and chrome mixer tap.

### **First Floor Landing**

Carpet flooring and loft hatch.

### **Master Bedroom**

Carpet flooring, two double glazed windows to the front, one radiator and built in storage.

### **Bedroom Two**

Carpet flooring, double glazed window to the side and one radiator.

### **Bedroom Three**

Carpet flooring, double glazed window to the front, one radiator and a boiler.

### **Outside:**

#### **Front Garden**

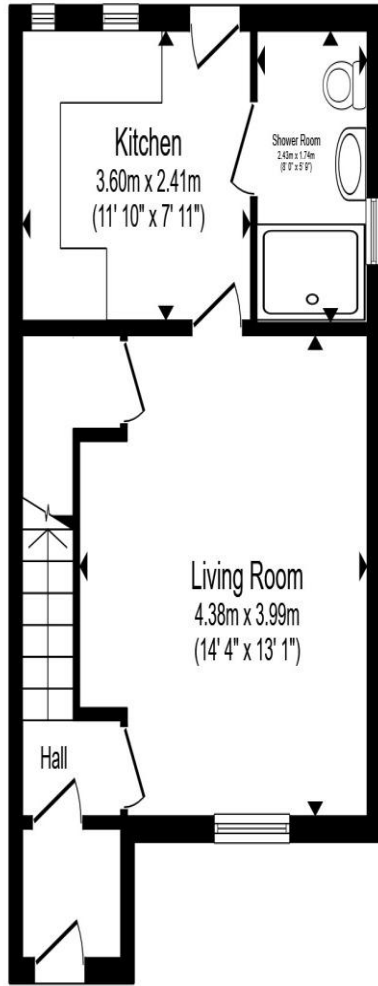
A large block paved frontage, providing ample off street parking and a side access gate.

#### **Rear Garden**

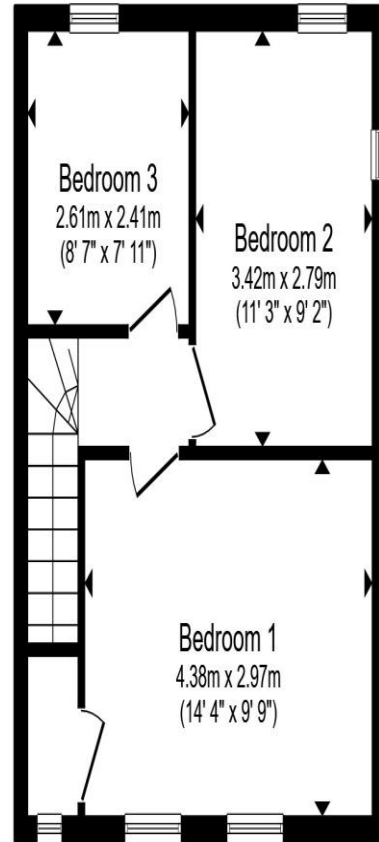
A block paved rear garden with a fully enclosed border, a side access gate and an outbuilding.

#### **Outbuilding**

Wooden outbuilding with double glazed window to the side, French doors to the side, insulation and power.



**Ground Floor**



**First Floor**

Total floor area 72.9 m<sup>2</sup> (784 sq.ft.) approx

This floor plan is for illustrative purposes only. It is not drawn to scale. Any measurements, floor areas (including any total floor area), openings and orientation are approximate. No details are guaranteed, they cannot be relied upon for any purpose and they do not form part of any agreement. No liability is taken for any error, omission or misstatement. A party must rely upon its own inspection(s). Powered by [www.propertybox.io](http://www.propertybox.io)



**welcome to**  
**Goldsmith Road,**  
**Ipswich**

- No onward chain
- Three bedrooms
- Ground floor bathroom
- Off street parking
- Paved rear garden with outbuilding

Tenure: Freehold EPC Rating: C  
Council Tax Band: A

**£200,000**



**view this property online** [williamhbrown.co.uk/Property/IPS121371](http://williamhbrown.co.uk/Property/IPS121371)



Property Ref:  
IPS121371 - 0004

1. MONEY LAUNDERING REGULATIONS Intending purchasers will be asked to produce identification documentation at a later stage and we would ask for your co-operation in order that there is no delay in agreeing the sale. 2. These particulars do not constitute part or all of an offer or contract. 3. The measurements indicated are supplied for guidance only and as such must be considered incorrect. Potential buyers are advised to recheck measurements before committing to any expense. 4. We have not tested any apparatus, equipment, fixtures or services and it is in the buyers interest to check the working condition of any appliances. 5. Where an EPC, or a Home Report (Scotland only) is held for this property, it is available for inspection at the branch by appointment. If you require a printed version of a Home Report, you will need to pay a reasonable production charge reflecting printing and other costs. 6. We are not able to offer an opinion either written or verbal on the content of these reports and this must be obtained from your legal representative. 7. Whilst we take care in preparing these reports, a buyer should ensure that his/her legal representative confirms as soon as possible all matters relating to title including the extent and boundaries of the property and other important matters before exchange of contracts.

William H Brown is a trading name of Sequence (UK) Limited which is registered in England and Wales under company number 4268443, Registered Office is Cumbria House, 16-20 Hockliffe Street, Leighton Buzzard, Bedfordshire, LU7 1GN. VAT Registration Number is 500 2481 05.



**william h brown**



**01473 226101**



[ipswich@williamhbrown.co.uk](mailto:ipswich@williamhbrown.co.uk)



16-18 Wolsey House, Princes Street, IPSWICH,  
Suffolk, IP1 1QT



[williamhbrown.co.uk](http://williamhbrown.co.uk)