

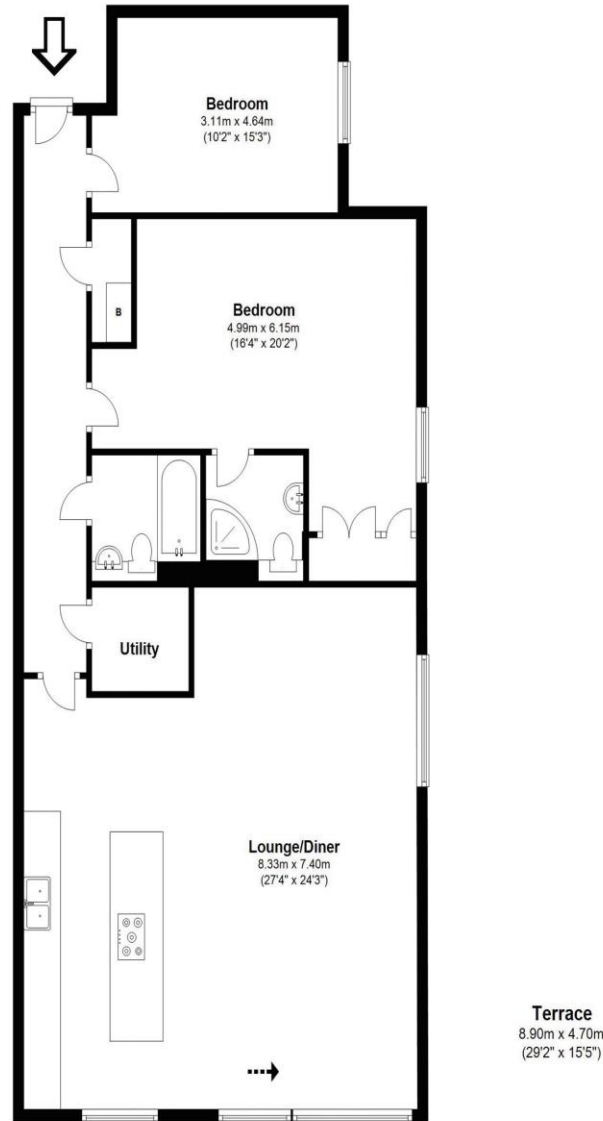


602 The Heart, Walton-on-Thames, Surrey, KT12 1GG

£525,000



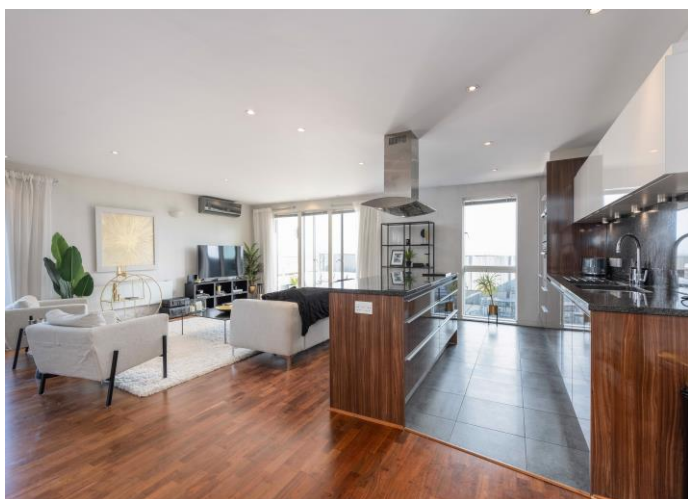
Approximate gross internal floor area 121.5 Sq M 1,308 Sq Ft



Total area: approx. 121.5 sq. metres (1307.6 sq. feet)

Whilst every attempt has been made to ensure the accuracy of the floor plan contained here, measurements are approximate and no responsibility is taken for any error, omission, or mis-statement. The plan is for illustrative purposes only and should be used as such by any prospective purchaser.

Offered with no onward chain, a stunning and rarely available penthouse apartment, ideally situated within the exclusive Heart of Walton development. This unique development offers premium amenities including secure underground parking, concierge service, and 24-hour security. The apartment is exceptionally spacious, featuring a bright open-plan living and kitchen area, stylishly separated by a central island. Double doors lead out to a private patio with far-reaching views - perfect for entertaining during the summer months. There are two generous double bedrooms, two modern bathrooms, and a separate utility room, all finished to a high contemporary specification. Located in the heart of the town, the property benefits from easy access to a wide range of local amenities. The River Thames and Walton mainline station are both within walking distance, providing excellent leisure and transport links. Early viewings are highly recommended to fully appreciate this impressive penthouse. EPC Rating C. Please note, photographs were taken prior to current occupation.



AGENTS NOTES: These details do not constitute any part of an offer or contract. In issuing them we do not have any authority to give any warranty or representation whatsoever in respect of this property. These details are provided without any responsibility on our part or the part of the vendors. No statements in these details are to be relied upon as representations of fact and purchasers should satisfy themselves by inspection or otherwise as to the accuracy of the statements contained therein.

Equipment: We have not tested the equipment or central heating system mentioned in these particulars and purchasers are advised to satisfy themselves as to their working order and condition.

Measurements: Great care is taken when measuring but measurements should not be relied upon for ordering carpets, equipment, etc.