



Mortley Close, Tonbridge – TN9 1ET

Guide Price £595,000

bracketts
est. 1828



Offered for sale is this beautifully presented and generously proportioned two-bedroom penthouse apartment, ideally situated in the highly sought-after Mortley Close development in the very heart of the town centre.

Perfectly positioned for convenient town living, the property is just moments from the High Street with its wide range of shops, cafés and amenities, as well as the picturesque castle grounds, riverside walks and the mainline station, providing excellent transport links for commuters.

Internally, the apartment is finished to an excellent standard and comprises a communal entrance with lift and stair access to all floors, entrance hall with security video entry system, and useful storage cupboards. There are two well-proportioned double bedrooms, both benefiting from en-suite bathroom and shower facilities.

The spacious open-plan modern fitted kitchen flows into a large dual-aspect reception/dining room, enhanced by a striking apex window that floods the space with natural light and offers attractive views across the town centre surroundings.

Further benefits include secure undercroft parking, lift access, and the added advantage of no onward chain, making for a smooth and straightforward purchase. This exceptional central apartment must be viewed to be fully appreciated.

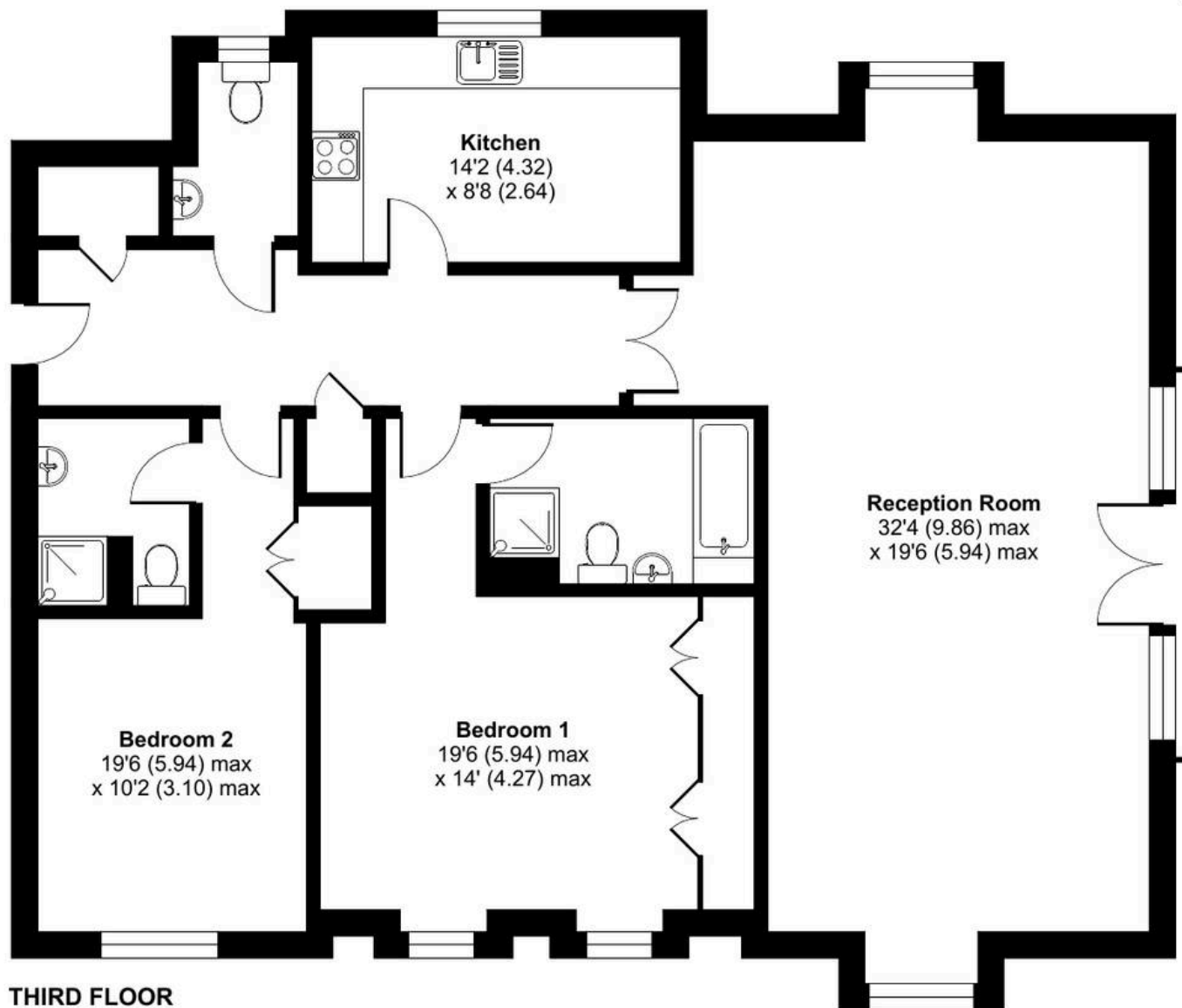




Mortley Close, Tonbridge, TN9

Approximate Area = 1365 sq ft / 126.8 sq m

For identification only - Not to scale



THIRD FLOOR

