



110 Eastfield Road, Portsmouth, PO4 9EN

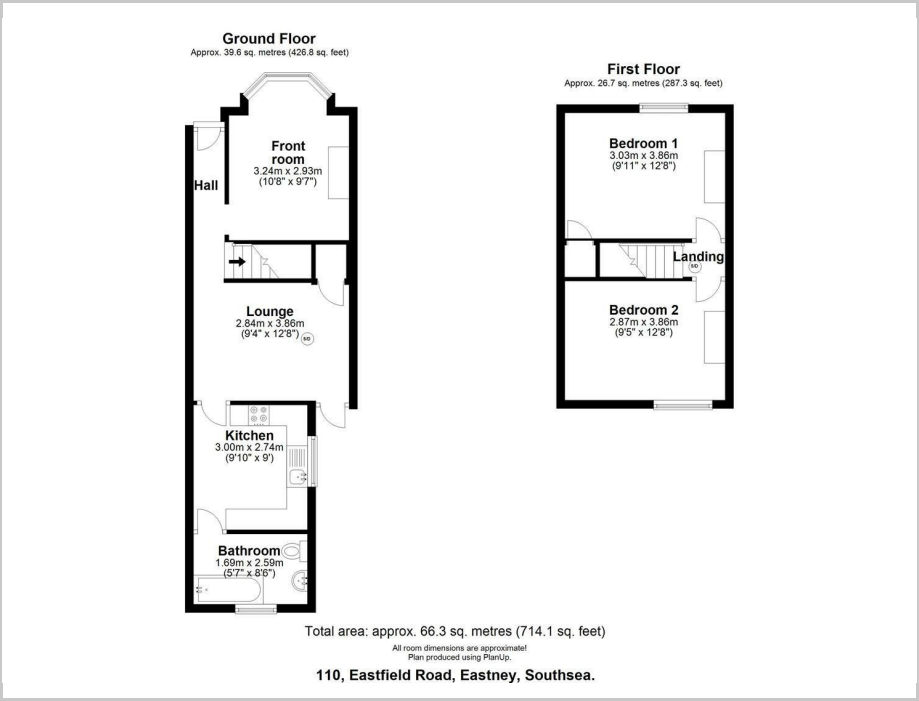
£1,000 PCM Council Tax Band A Deposit £1,153



**Tully's**



Floor Plan



Area Map



Accommodation

- Holding deposit - £230.00
- Deposit - £1153.00
- 2 Bedroom House
- 2 reception rooms
- Good sized garden
- Southsea location
- Available 18/03/2026

Viewing

Please contact our Southsea Office on 023 9273 2241 if you wish to arrange a viewing appointment for this property or require further information.

Energy Efficiency Graph

