



Westbourne Road, N7

£1,200,000

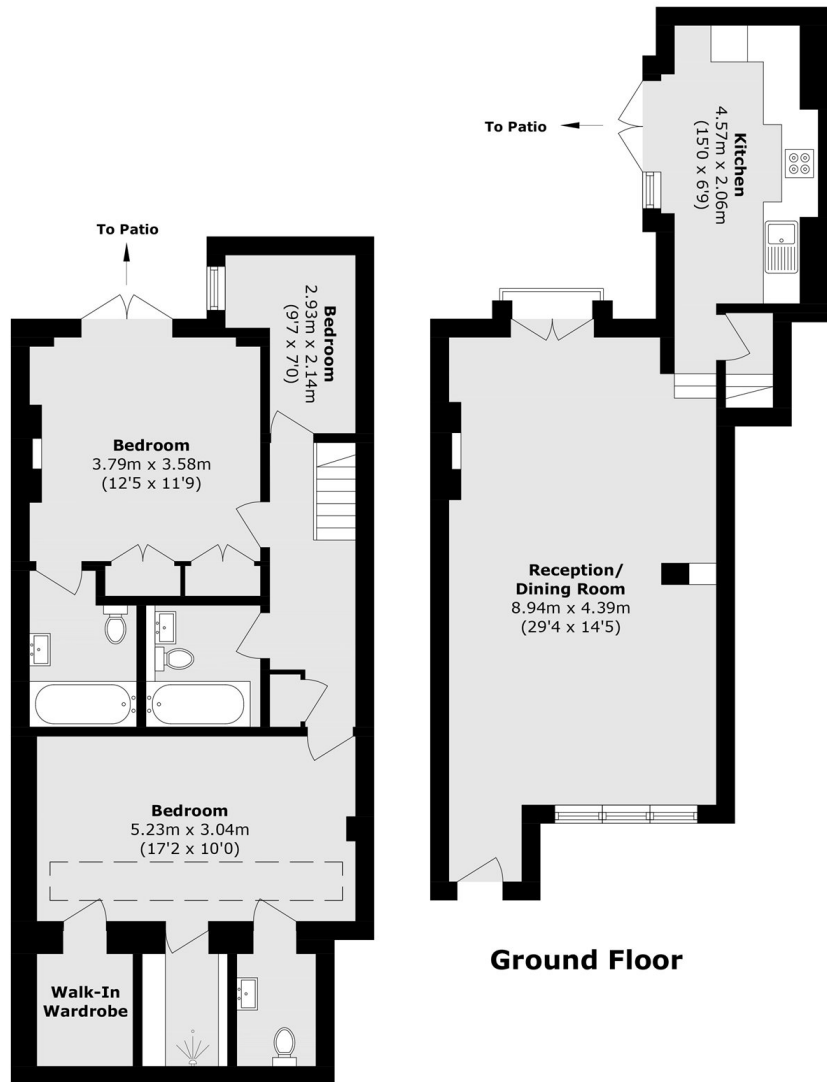
A well-presented three-bedroom split-level maisonette offering spacious accommodation throughout. The property comprises an open-plan reception and dining room, a separate kitchen and a private courtyard garden. The lower ground floor provides three bedrooms and three bathrooms, including a principal suite with a walk-in wardrobe, shower room and separate WC. The second bedroom also benefits from an en suite shower room, built-in storage and access to a private patio.

The property enjoys excellent transport links via Highbury & Islington (Victoria Line, Overground, National Rail), Caledonian Road (Piccadilly) and Caledonian Road & Barnsbury (Overground) stations. Upper Street is within easy reach, offering a wide selection of shops, restaurants and bars, while Barnsbury's popular cafés, pubs and local amenities are all nearby.

Features

- Three Bedrooms
- Three Bathrooms
- Maisonette
- West Facing Garden
- Split-Level
- Separate Kitchen

Westbourne Road, London, N7



Lower Ground Floor

Ground Floor

Total area (approx.): 114.3 sq. m (1230.3 sq. ft)