



Mill Plat, TW7

£2,750,000

Dexters



Mill Plat, TW7

A beautiful, period family home with stunning interiors set within this secure gated development overlooking The River Crane.

Accommodation is made up of a grand entrance hall leading to an impressive drawing room with high ceiling, large sash windows which overlook the rear garden and river beyond, as well as a feature fire place. There is a further bay fronted reception room and guest WC, on this level. On the lower ground floor the stylish kitchen leads onto a family dining area with doors to garden, utility room, shower room and a family snug room. On the first floor the beautiful principal bedroom has continued high ceilings with a luxurious en-suite and walk-in dressing room. There are two further double bedrooms and a family bathroom on this level. The top floor comprises of three further double bedrooms, one with en-suite and a family bathroom. To the front of the house there is a side garage.

To the rear there is a 100ft garden with patio/entertaining space and outdoor kitchen. The garden leads onto a landscaped communal garden which overlooks The River Crane.

Mill Plat is located in Old Isleworth which borders The River Thames, a stone's throw from Syon House and Park.

Features

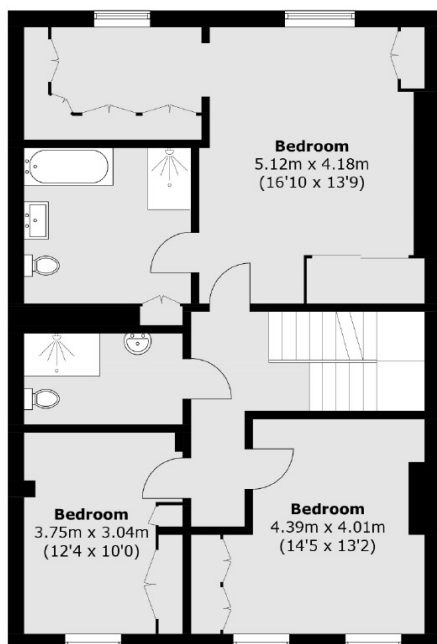
- Beautiful Family Home
- Six Double Bedrooms
- Five Bathrooms
- Stunning Interiors
- River Views
- Gated Development



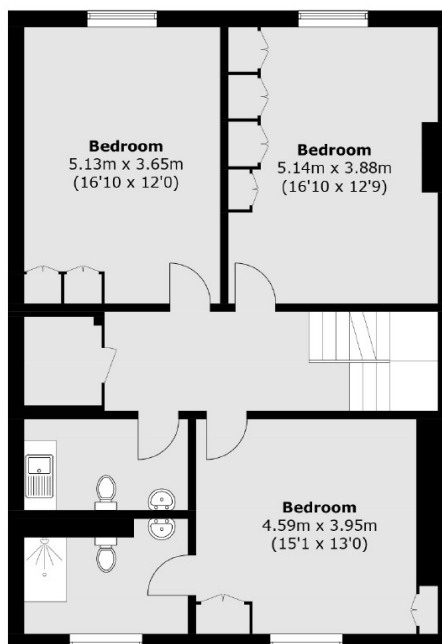




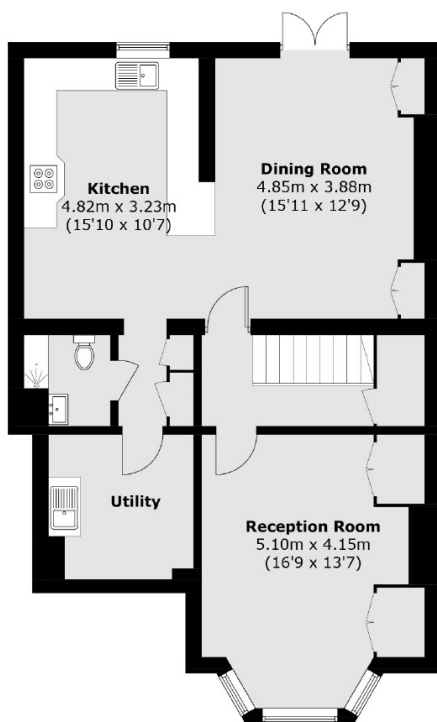
Mill Plat, Isleworth, TW7



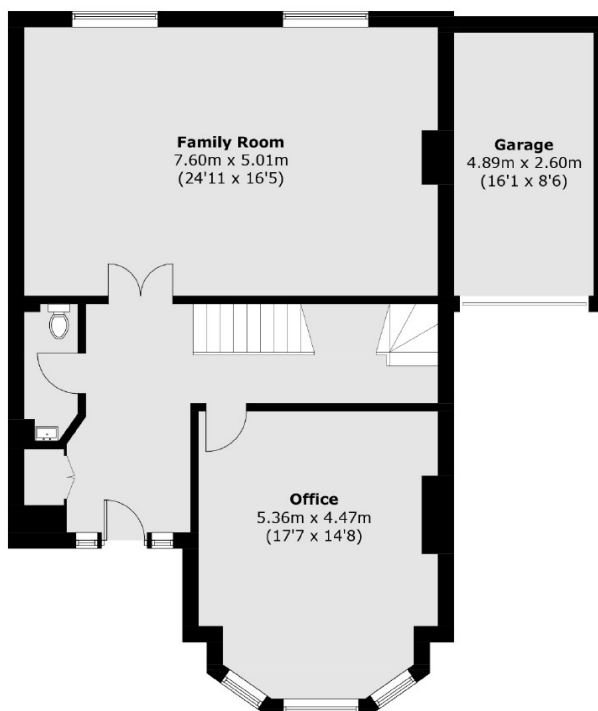
First Floor



Second Floor



Lower Ground Floor



Ground Floor

Total area (approx.): 335.0 sq. m (3,605.9 sq. ft)
Garage: 12.7 sq. m (136.7 sq. ft)