




PROMINENCE
ESTATES



RESIDENTIAL
PROPERTY EXPERTS

COVENTRY, WARWICKSHIRE
& LEAMINGTON SPA

SEWALL HIGHWAY,
WYKEN, COVENTRY, CV6 7JE

£1,350 PER CALENDAR

SEWALL HIGHWAY



PROMINENCE
ESTATES

This well-presented 3-bedroom end of terrace house in Wyken offers a fantastic opportunity for comfortable living. Extended to the rear, the property boasts spacious and modern interiors, perfect for family life. The ground floor features a large, bright living area that seamlessly flows into a stylish kitchen/dining space, ideal for entertaining. Upstairs, you'll find three generously sized bedrooms and a family bathroom.

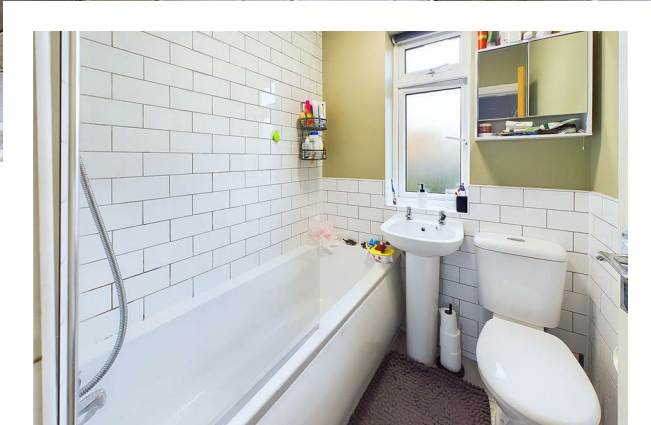
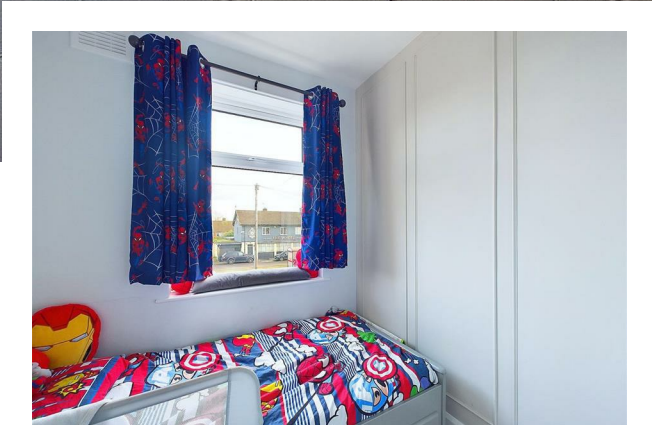
is within easy reach of local amenities, schools, and transport links, making it an ideal choice for families and professionals alike. A must-see property, available to rent now!

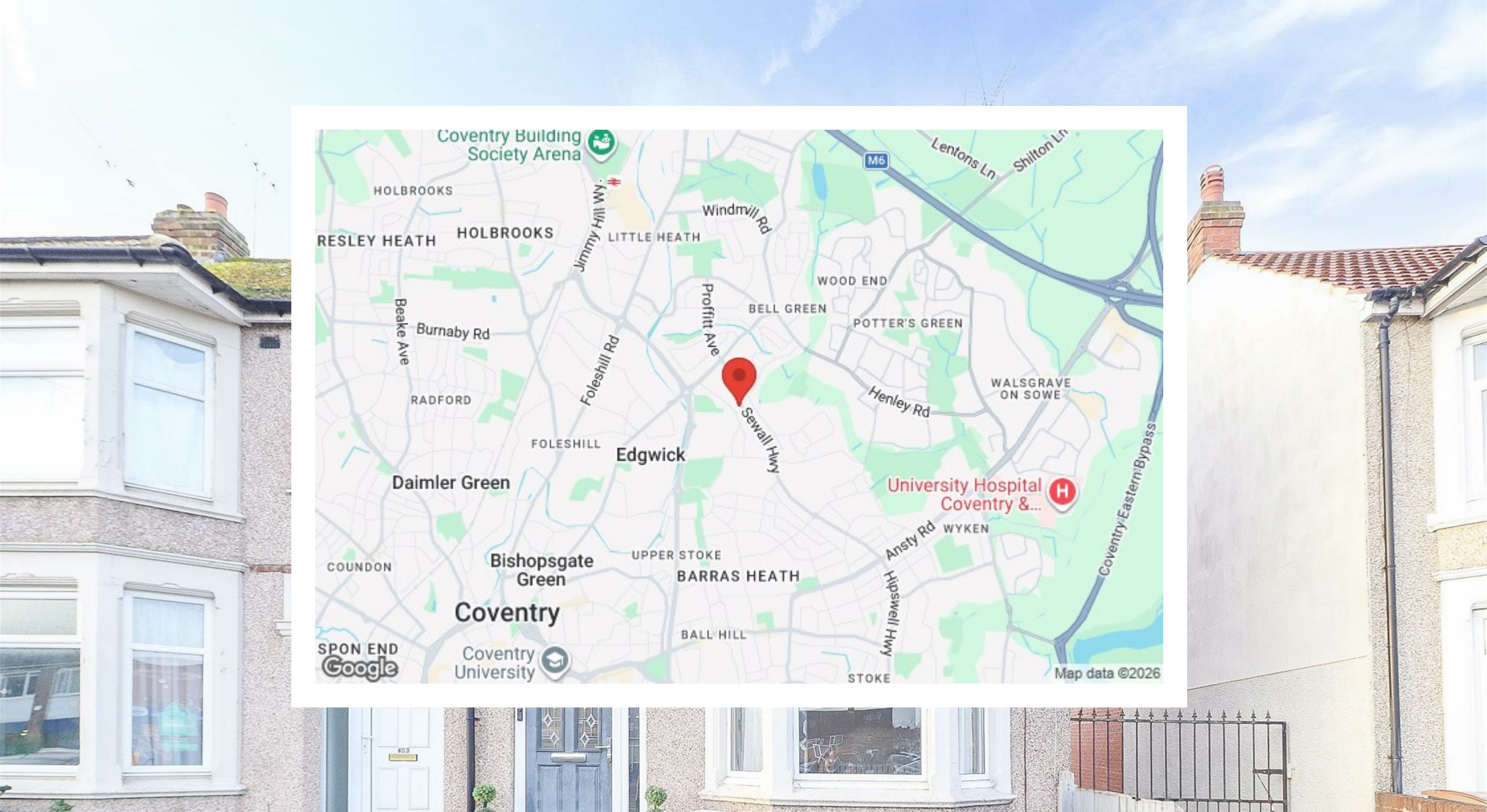


Outside, the property benefits from a driveway providing ample parking, along with a charming summer house at the rear, offering a versatile space for relaxation or a home office. The garden is well-maintained, providing a private and peaceful outdoor retreat.

Located in a popular residential area, this home







Prominence Estates
5 Queen Isabels Avenue,
Cheylesmore,
Coventry,
CV3 5GE

02476 309 826
lettings@prominenceestates.com
www.prominenceestates.com


PROMINENCE
ESTATES