



Coppetts Road, N10

£1,875 Per calendar month

Situated in a modern development is this two double bedroom second floor flat. This property offers an open plan kitchen/reception, two double bedrooms one bathroom and direct access onto a private balcony along with allocated off road parking space.

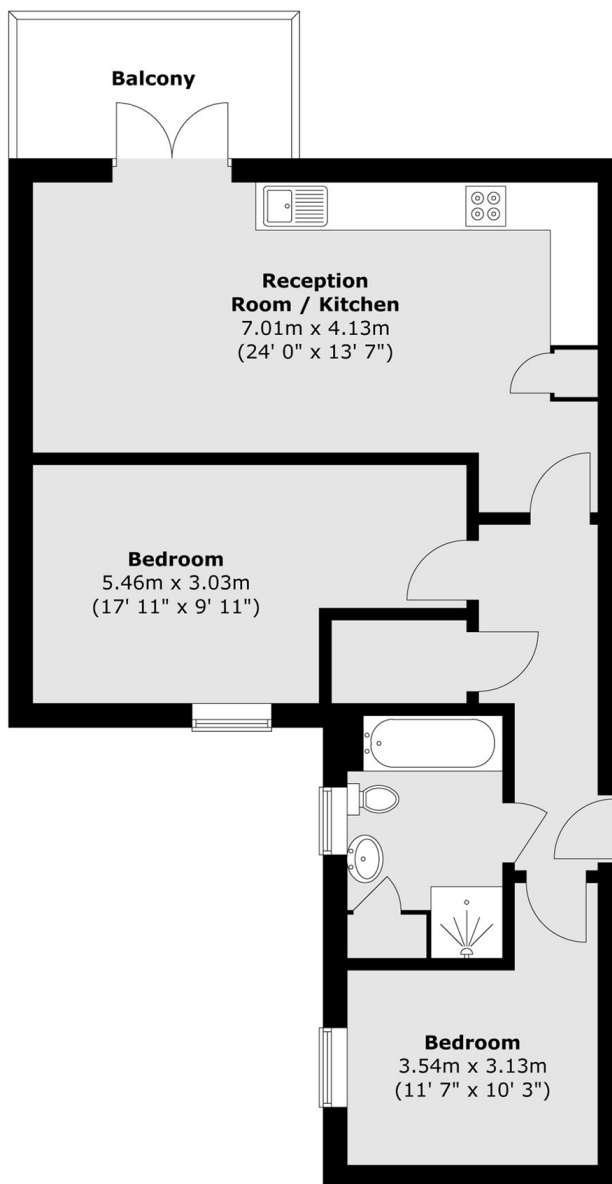
Gilson Place is situated within easy reach of shops and amenities in Muswell Hill with excellent green spaces including Alexandra Park close by. The development is within catchment areas for outstanding schools.

Features

- Two Bedrooms
- Second Floor
- Private Balcony
- Allocated Parking
- Modern Development
- Unfurnished

Coppetts Road, London, N10

First Floor



Total area (approx.) : 65.2 sq. m (702 sq. ft)
Total balcony area (approx.) : 6 sq. m (64 sq. ft)