



## 18 Main Street, West Ilsley, Newbury, Berkshire, RG20 7AR

£2,500 PCM - 7th July 2026.

- Located in this sought after village
- Immaculately presented 3 bedroom cottage
- Good size garden with views over the Ridgeway
- Driveway parking for 2 cars
- Oil central heating
- Superfast broadband

# 18 Main Street, Newbury RG20 7AR

Located in this sought after village, immaculately presented 3 bedroom cottage, with separate annex in the garden. Open plan kitchen breakfast/sitting room, with doors out to the garden, spacious utility room, sitting room with open fire place, double bedroom with ensuite shower, 2 bedrooms, family bathroom with bath, Dressing room. Good size garden with views over the Ridgeway.. Single garage Driveway parking for 2 cars. Oil central heating. EPC E. Council Tax Band D. Village is within an area of outstanding natural beauty, catchment area for The Downs School and has a popular pub and community events.

The Ofcom Broadband Checker states there is:

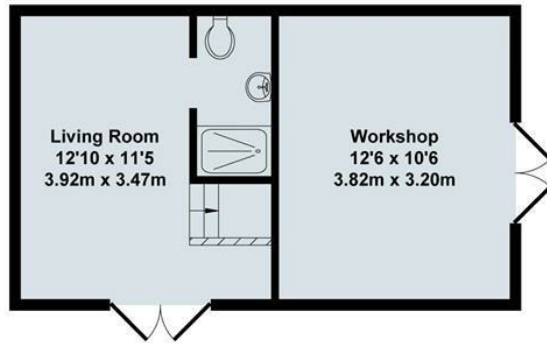
- Superfast broadband has a download speeds between 30Mbps and 300Mbps.

When an application is agreed a holding deposit will be required of a maximum of one weeks rent

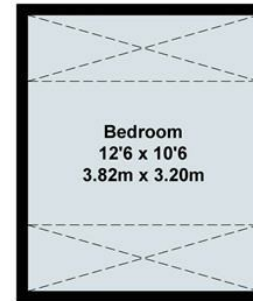


Council Tax Band: D

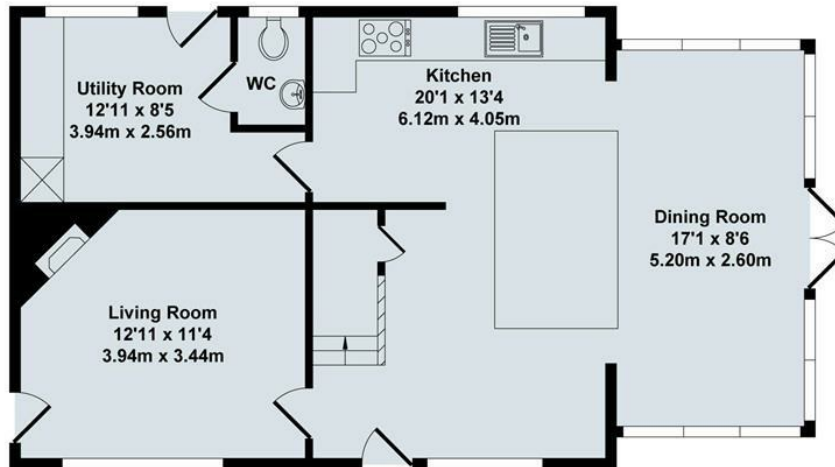




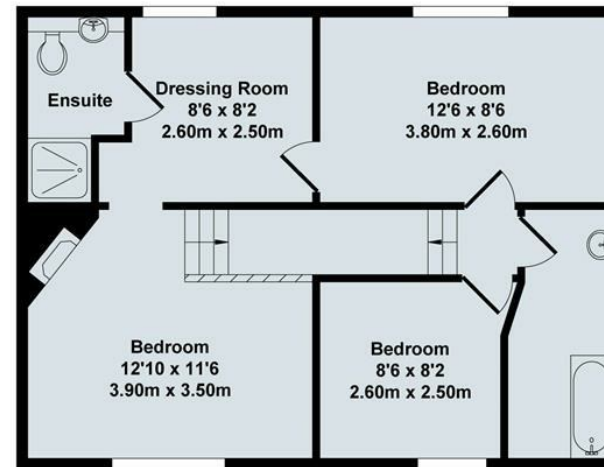
Outbuilding Ground Floor



Outbuilding First Floor



Ground Floor



First Floor


Total Approx. Floor Area 1645 Sq.Ft. (152.90 Sq.M.)

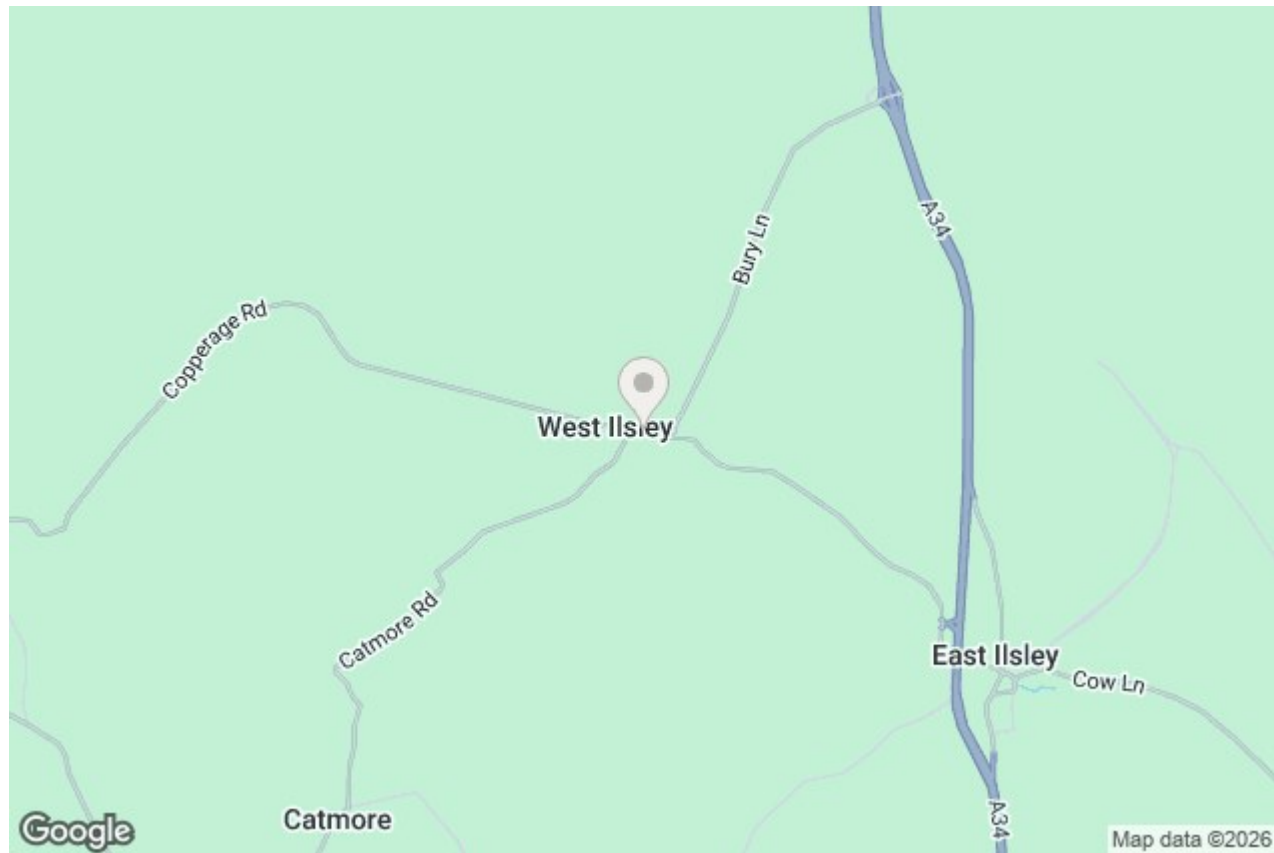
All items illustrated on this plan are included in the "Total Approx Floor Area"





## Energy Efficiency Rating

	Current	Potential
Very energy efficient - lower running costs		
(92 plus) <b>A</b>		
(81-91) <b>B</b>		
(69-80) <b>C</b>		76
(55-68) <b>D</b>		
(39-54) <b>E</b>		
(21-38) <b>F</b>	31	
(1-20) <b>G</b>		
Not energy efficient - higher running costs		
<b>England &amp; Wales</b>	EU Directive 2002/91/EC	



### Directions

### Viewings

Viewings by arrangement only. Call 01235 514267 to make an appointment.

### Council Tax Band

D