

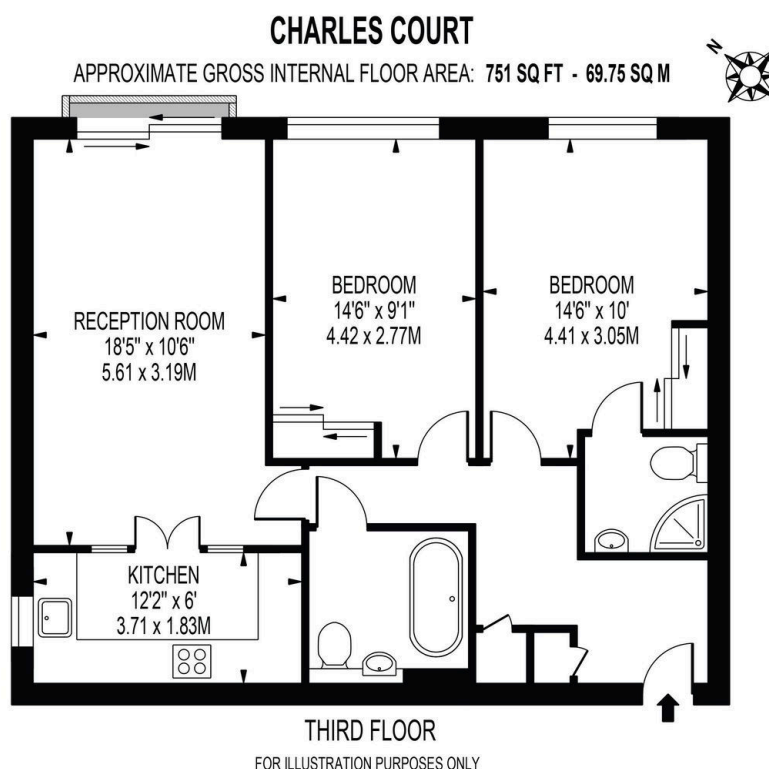
## Charles Court, Acton, W3

Guide Price £450,000 to £475,000

2 2 1



- Quote MG1175 for all enquiries.
- Guide Price of £450,000 to £475,000
- 2 Double Bedrooms
- 2 Bathroom (1 Ensuite)
- 3rd Floor with Lift Access
- Allocated Parking Space
- 751 SqFt with Stylish Finish Throughout
- Communal Gardens
- Offered Chain Free
- Short walk to Stamford Brook (District Line) Tube



THIS FLOOR PLAN SHOULD BE USED AS A GENERAL OUTLINE FOR GUIDANCE ONLY AND DOES NOT CONSTITUTE IN WHOLE OR IN PART AN OFFER OR CONTRACT. ANY INTENDING PURCHASER OR LESSEE SHOULD SATISFY THEMSELVES BY INSPECTION, SEARCHES, ENQUIRIES AND FULL SURVEY AS TO THE CORRECTNESS OF EACH STATEMENT. ANY AREAS, MEASUREMENTS OR DISTANCES QUOTED ARE APPROXIMATE AND SHOULD NOT BE USED TO VALUE A PROPERTY OR BE THE BASIS OF ANY SALE OR LET.

Bright and spacious 2-bed flat for sale in West London, ideally located in the popular Charles Court development on Larden Road, Acton W3, near Chiswick and Shepherd's Bush. Features include a large open-plan living/dining area, Juliet balcony, and modern fitted kitchen with integrated appliances. The principal bedroom offers built-in wardrobes and an en suite shower room, while the second double bedroom is served by a stylish family bathroom. Excellent storage throughout.