

RENT ME



MARKET RISE, CHERRY HINTON ROAD

£1,750 PCM



2



1



1



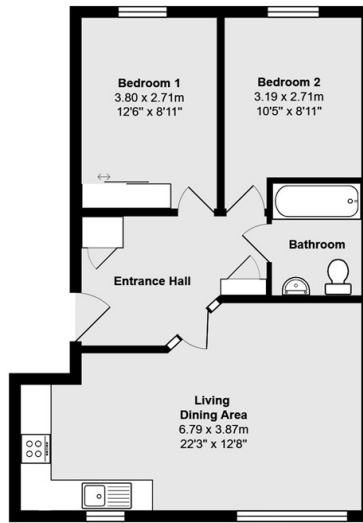
C

2 Bedroom Apartment located in Cherry Hinton Road

Refurbished Second floor apartment offering 2 double bedrooms, open plan lounge/kitchen with built in appliances.

Unfurnished and allocated secure parking. Situated close Addenbrookes Hospital, City Centre and Railway Station and all local amenities. No Pets, Available NOW

Market Rise Cherry Hinton Road
First Floor

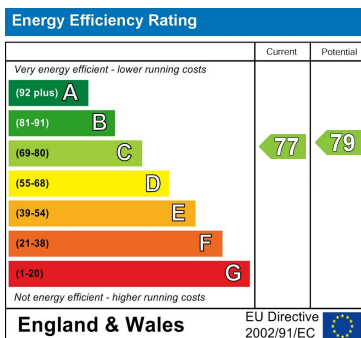


Total Area: 57.9 m² ... 623 ft²
All measurements are approximate and for display purposes only
Plan prepared by: charlesjharrison.co.uk

Council Tax Band

C

Energy Performance Graph



Call us on

01638 551551

enquiries@lodge-lettings.co.uk

www.lodge-lettings.co.uk

Agents Note: Whilst every care has been taken to prepare these particulars, they are for guidance purposes only. All measurements are approximate and are for general guidance purposes only and whilst every care has been taken to ensure their accuracy, they should not be relied upon and potential buyers are advised to recheck the measurements.