



Guide Price
£245,000

Freehold

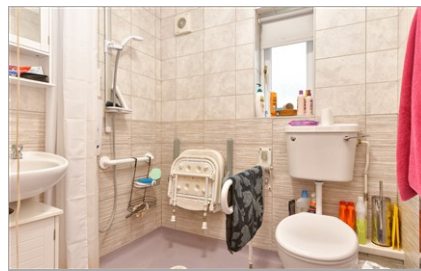
3x  1x  2x 

**Churchill Avenue,
Chatham, Kent, ME5**

OVER 60?

Secure this property
for up to **59% less!**

Wards
Helping you move forwards



Main features

- Terraced house with good sized front and rear gardens
- Some updating needed and potential to improve
- Separate lounge and dining room plus conservatory
- Brilliant location for a choice of local schools and walking distance to shops
- Excellent for first time buyers or those upgrading to a family home

Accommodation

GROUND FLOOR

Entrance Hallway
 Lounge: 12'6 x 11'6 (3.81m x 3.51m)
 Kitchen: 9'10 x 7'5 (3.00m x 2.26m)
 Dining Room: 9'2 x 8'6 (2.80m x 2.59m)
 Conservatory: 9'10 x 7'6 (3.00m x 2.29m)

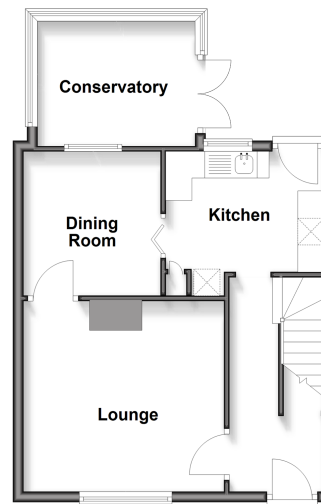
FIRST FLOOR

Landing
 Bedroom 1: 12'9 x 9'0 (3.89m x 2.75m)
 Bedroom 2: 12'0 x 9'9 (3.66m x 2.97m)
 Bedroom 3: 10'2 x 6'11 (3.10m x 2.11m)
 Wet Room

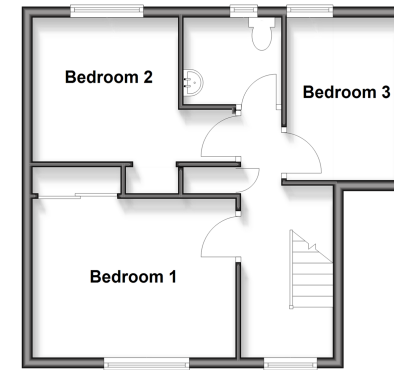
OUTSIDE

Front Garden
 Rear Garden
 Outbuilding

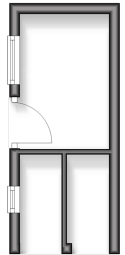
Ground Floor
 Approx. 44.0 sq. metres (473.4 sq. feet)



First Floor
 Approx. 40.4 sq. metres (434.5 sq. feet)



Outbuilding
 Approx. 7.4 sq. metres (79.2 sq. feet)



Call Chatham - 01634 841243 ■ wardsofkent.co.uk

■ Through a Homewise Home For Life Plan people aged 60+ can secure this property for up to 59% less, by purchasing a Lifetime Lease



10430962/20260413/AP/BC