



Meadowsweet Road | Kirkby | Liverpool | L32 1BT

Offers In The Region Of £188,000



Meadowsweet Road | Kirkby  
Liverpool | L32 1BT  
Offers In The Region Of £188,000

Situated in the St Kevins area of Kirkby, this delightful town house offers a perfect blend of modern living and comfort. Sold with sitting tenant, this would make an ideal investment opportunity.

Upon entering, you are greeted by a well-appointed reception room, ideal for relaxation or entertaining guests. The house boasts three generously sized bedrooms, ensuring that everyone has their own private space. With two bathrooms, morning routines are made easy, accommodating the needs of a busy household.

The location is particularly appealing, offering a friendly community atmosphere while being

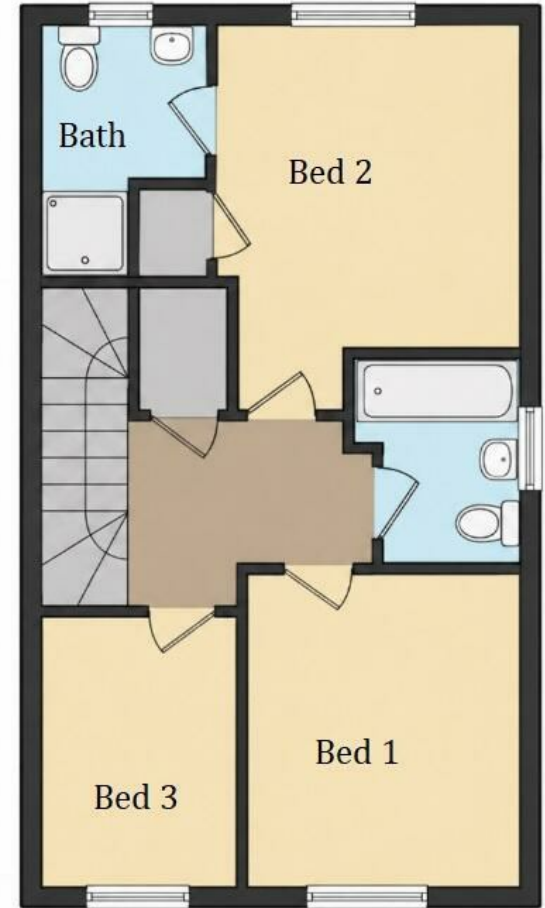
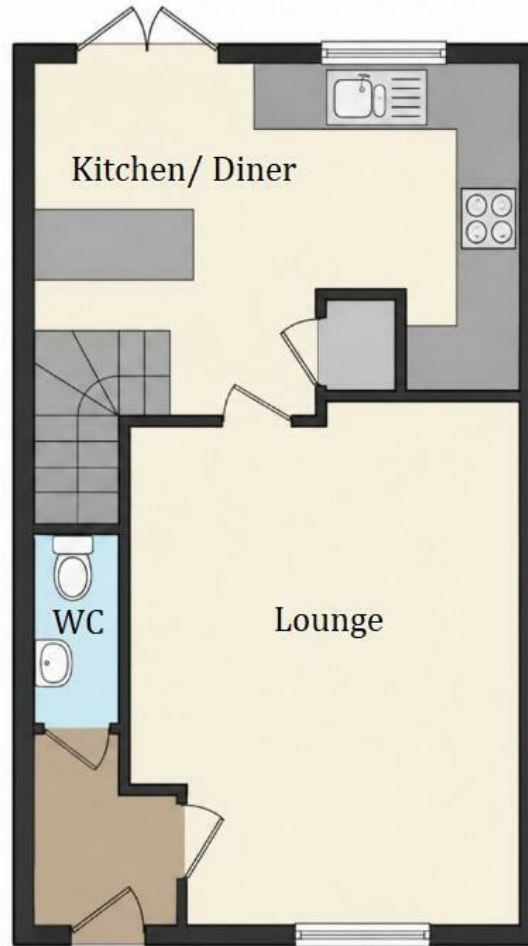
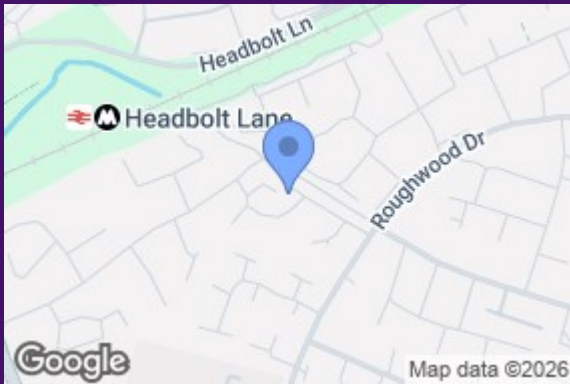
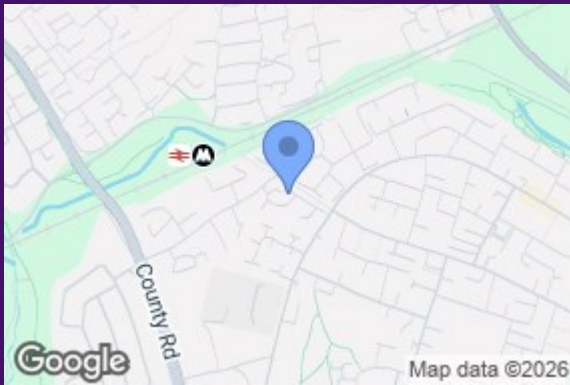
- 3 spacious bedrooms
- 2 modern bathrooms
- Cosy reception room
- Terraced house style
- Built in 2010
- 807 sq ft living space
- Located in Kirkby, Liverpool
- Close to local amenities
- Easy access to transport links
- Viewing recommended











Council Tax Band **B**    EPC Rating **C**

Energy Efficiency Rating		Current	Potential
Very energy efficient - lower running costs			
(92 plus)	<b>A</b>		
(81-91)	<b>B</b>		
(69-80)	<b>C</b>	<b>79</b>	
(55-68)	<b>D</b>		
(39-54)	<b>E</b>		
(21-38)	<b>F</b>		
(1-20)	<b>G</b>		
Not energy efficient - higher running costs			
England & Wales		EU Directive 2002/91/EC	

14 Park Brow Drive  
 Kirkby  
 Merseyside  
 L32 6QP  
 0151 289 8585  
 jodie@dorankennedy.co.uk