

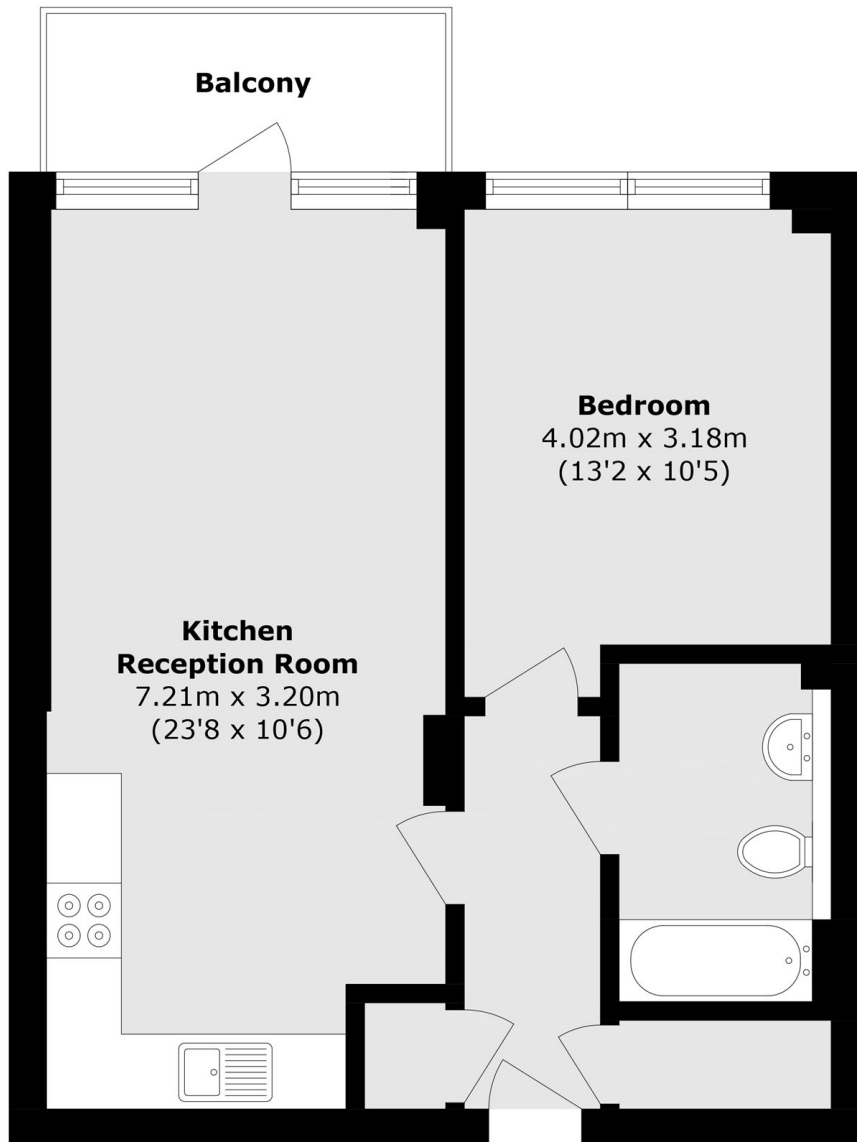


IONA TOWER, E14

£300,000

A one bedroom apartment located on the eleventh floor of the popular Iona Tower. This property features an open plan kitchen/living room with access to a private balcony and space to dine, a good sized double bedroom, built in storage throughout and a family bathroom.

- One Double Bedroom
- Private Balcony
- Modern Appliances
- Great Transport Links
- Built In Storage
- Wooden Flooring



Total area (approx.): 45.0 sq. m (484.3 sq. ft)
Balcony area (approx.): 4.0 sq. m (43.0 sq. ft)

LiFE RESIDENTIAL

36 Millharbour, London, E14

9JS

Sales: 020 3668 1033

Lettings: 020 3668 1030

Energy Rating: B. We aim to make our particulars both accurate and reliable. However they are not guaranteed; nor do they form part of an offer or contract. If you require clarification on any points then please contact us, especially if you're traveling some distance to view. Please note that appliances and heating systems have not been tested and therefore no warranties can be given as to their good working order.