

29 Wentworth Park Avenue, Birmingham, B17 9QU

£575,000

Hadleigh Estate Agents are delighted to offer this spacious and versatile four bedroom semi-detached family home on Wentworth Park Avenue. Set over three well-proportioned floors, the home has neutral décor throughout making it ideal for modern living, further benefitting from being within walking distance to Harborne High Street and sold with no upward chain.

The ground floor comprises two reception rooms, a modern fitted kitchen with underfloor heating and a convenient downstairs WC. The first floor offers three bedrooms alongside a family bathroom, while the second floor boasts a generous master bedroom complete with en-suite shower room.

Externally, the property benefits from driveway parking for multiple vehicles, a large double garage to the rear and a substantial private garden, making it an excellent choice for families seeking both space and practicality.

Entrance Hallway

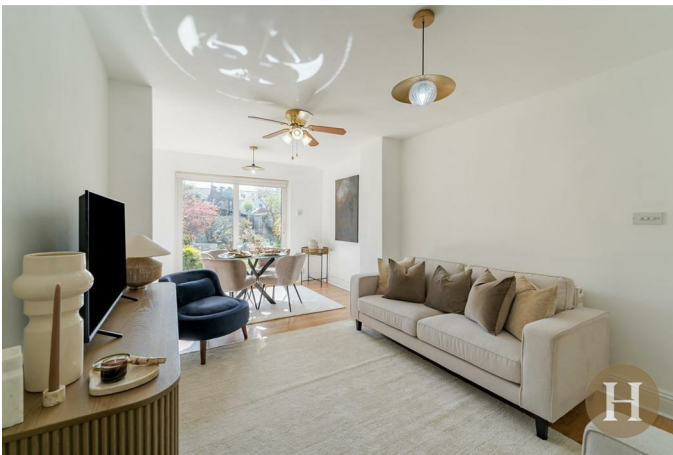
With double glazed window to the right, under stair storage and access to guest WC, lounge, living room and kitchen

Lounge



Spacious lounge with bay window, including a feature fireplace with carpeted flooring, ceiling light point and central heating radiator

Living/Dining Room



A bright and airy reception room with wooden laminate flooring and sliding glass patio doors providing access to the rear garden. Featuring a ceiling fan light, two ceiling pendants and central heating radiators.

Kitchen



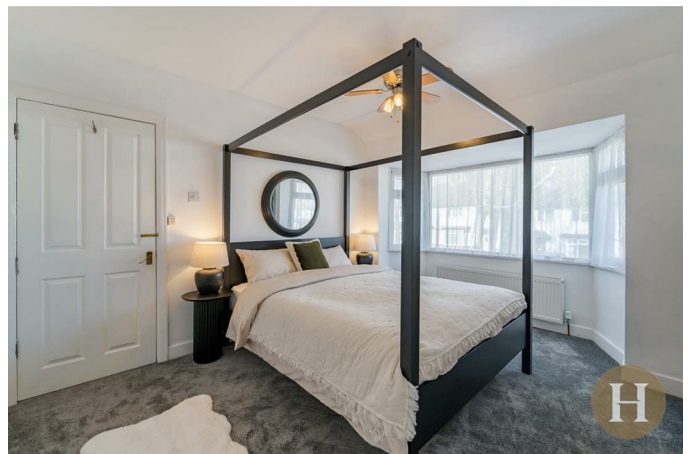
Modern fitted kitchen diner benefitting from underfloor heating and ample storage, as well as integrated appliances- namely oven, microwave, gas hob and dishwasher. Wooden laminate throughout with large French doors allowing garden access and a flood of natural light.

Guest WC



Guest WC providing low level flush WC, hand wash basin and ceiling light point.

Bedroom Two



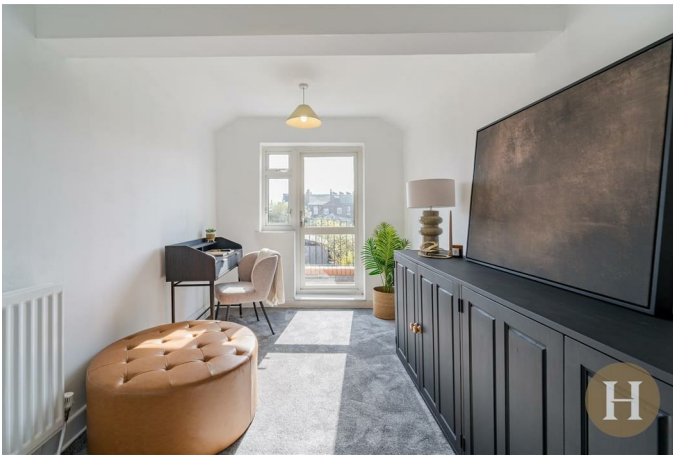
Large double room with bay window to front elevation, complete with carpeted flooring, ceiling fan light fitting and central heating radiator.

Bedroom Three



Further double room overlooking the rear garden, benefitting from carpeted flooring, ceiling light fitting and central heating radiator.

Bedroom Four



The fourth bedroom provides access to the balcony, overlooking the rear garden. The room provides built-in storage cupboards and is completed with carpeted flooring, ceiling light point and central heating radiator.

Bathroom



Modern family bathroom offering a fitted shower over bath. Low level flush WC, hand wash basin, tiled flooring and partially tiled walls, with double glazed window to front elevation.

Master Bedroom



Large master suite comprising walk-in wardrobe room, double glazed window the rear elevation, carpeted flooring and central heating radiator. Access to en-suite

Ensuite



Partially tiled en-suite with low level flush WC and hand wash basin. Mains walk in shower cubicle, central heating radiator and ceiling spotlights.

Garden



Private rear garden with paved patio areas, laid grass and mature shrubs.

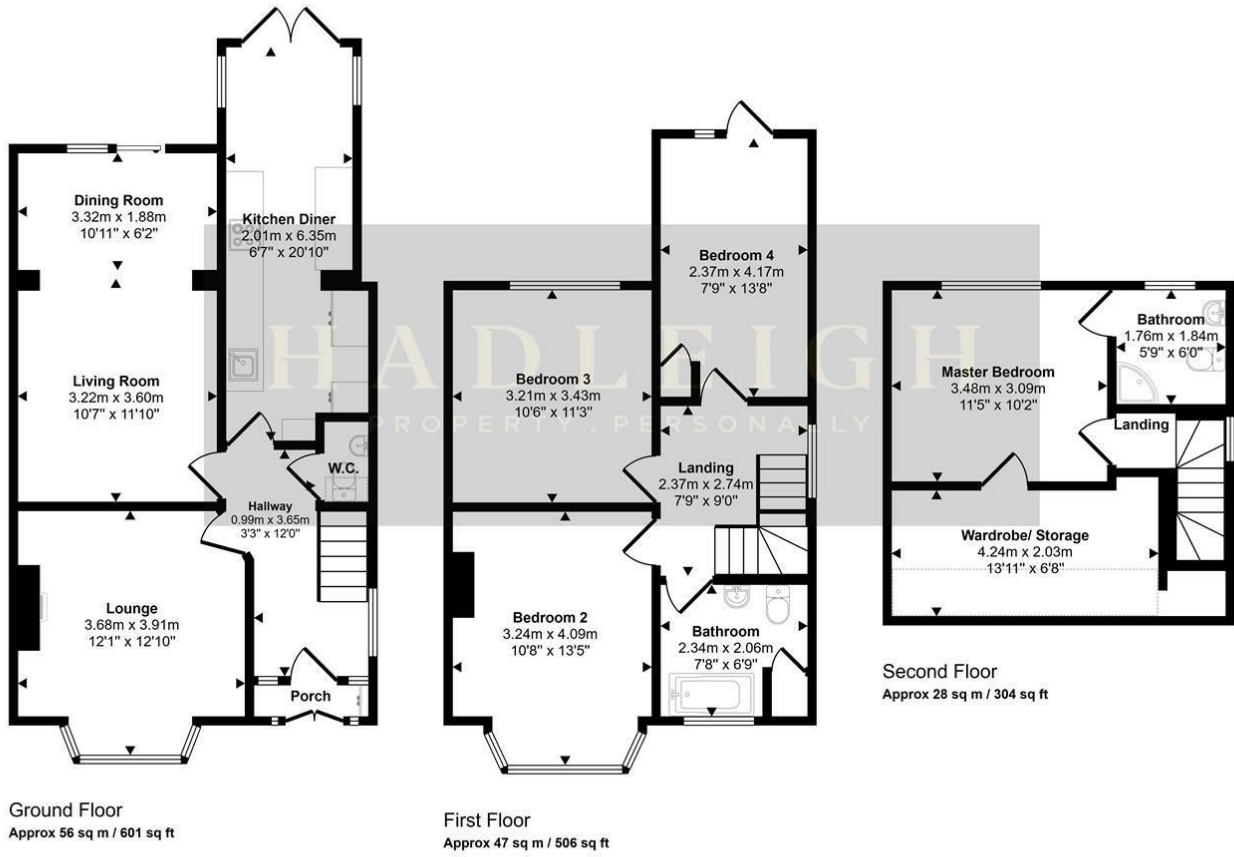
Garage



Up and over electric garage door, accessed from rear private road, allowing for parking and ample storage

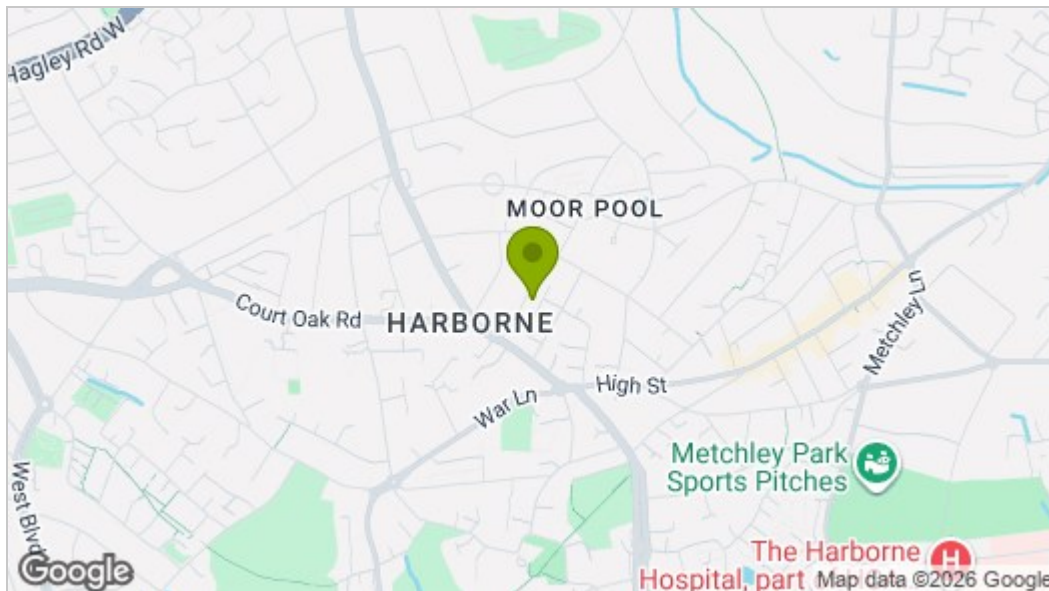
Floor Plan

Approx Gross Internal Area
131 sq m / 1412 sq ft

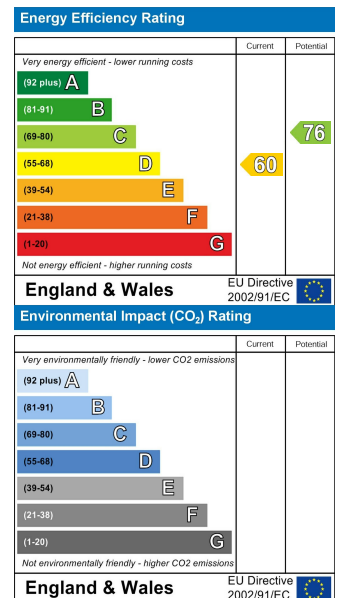


This floorplan is only for illustrative purposes and is not to scale. Measurements of rooms, doors, windows, and any items are approximate and no responsibility is taken for any error, omission or mis-statement. Icons of items such as bathroom suites are representations only and may not look like the real items. Made with Made Snappy 360.

Area Map



Energy Efficiency Graph



These particulars, whilst believed to be accurate are set out as a general outline only for guidance and do not constitute any part of an offer or contract. Intending purchasers should not rely on them as statements of representation of fact, but must satisfy themselves by inspection or otherwise as to their accuracy. No person in this firm's employment has the authority to make or give any representation or warranty in respect of the property.