



Guide Price
£210,000

Leasehold

1x  1x  1x 

Mineral Street, London,
SE18

OVER 60?

Secure this property
for up to **59% less!**

Wards
Helping you move forwards



Main features

- Ground floor
- 125 Year lease from 2004
- Balcony
- Gas central heating
- Walking distance to Plumstead train station

Accommodation

GROUND FLOOR

Entrance Hall

Bedroom 1: 13'0 x 8'10 (3.97m x 2.69m)

Bathroom

Kitchen: 9'8 x 6'11 (2.95m x 2.11m)

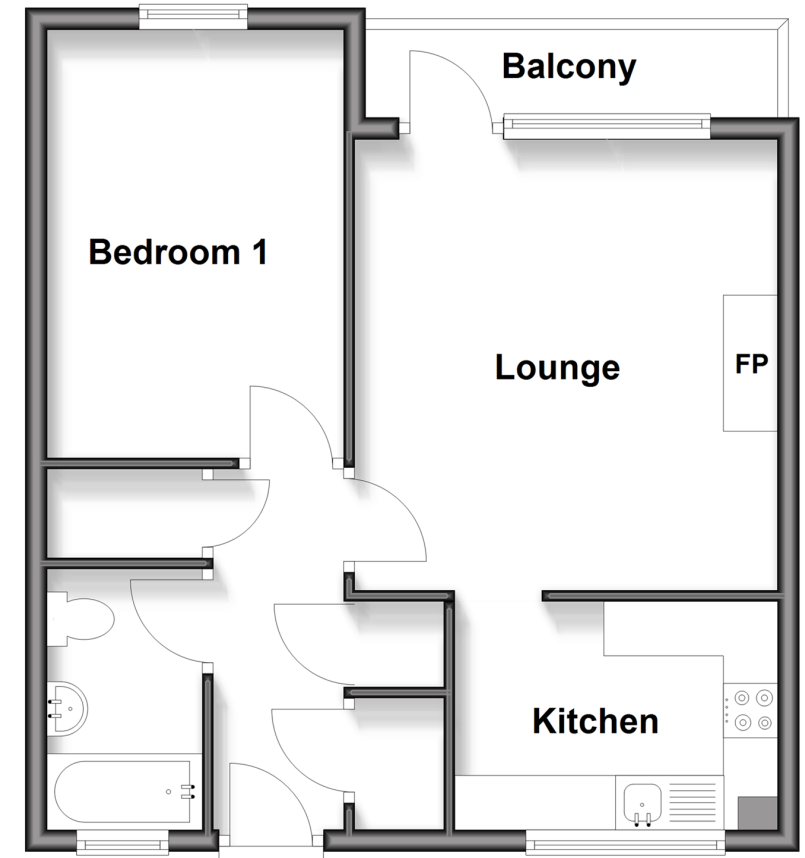
Lounge: 13'7 x 12'10 (4.14m x 3.91m)

OUTSIDE

Balcony

Ground Floor

Approx. 45.5 sq. metres (489.8 sq. feet)



Call Welling - 020 8301 6679 ■ wardsof Kent.co.uk

- Legal advice should be taken to verify fixtures/fittings, planning, alterations and/or lease details
- Appliances & services are untested, dimensions are approximate and floor plans are not to scale
- Through a Homewise Home For Life Plan people aged 60+ can secure this property for up to 59% less, by purchasing a Lifetime Lease



15009418/20260111/RL/LK