



Almorah Road, N1

£1,000,000

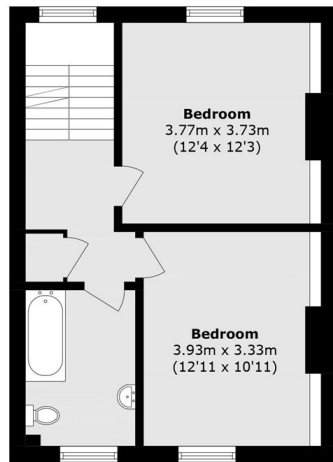
A three bedroom maisonette set on a tree-lined street in East Canonbury. This Victorian terrace property benefits from a private entrance, a large private garden, and three generously sized bedrooms arranged over the upper three floors.

Set in the heart of the East Canonbury conservation area, Almorah Road is a tree lined street with convenient access to a range of local amenities. The famous De Bevoir Deli is just around the corner, and Rosemary Gardens is just at the end of the road for green space. Essex Road (Great Northern) station, and multiple bus routes along New North Road offer links across London and into The City.

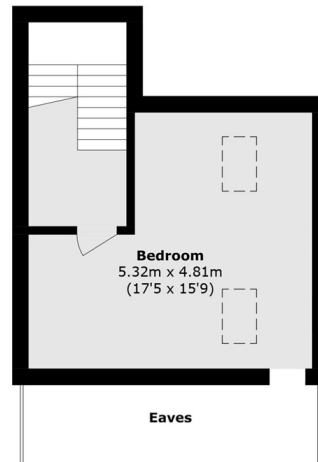
Features

- Three Bedrooms
- Private Garden
- Upper Maisonette
- Share of Freehold
- Chain Free
- Refurbishment Opportunity

Almorah Road, London, N1



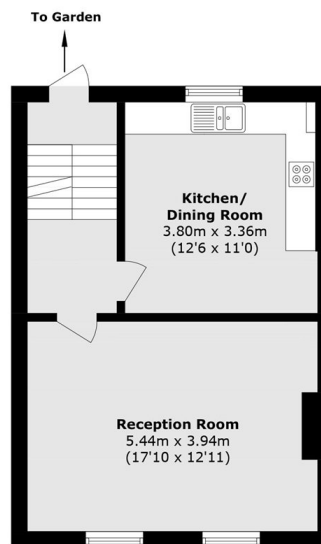
Second Floor



Third Floor



Ground Floor



First Floor

Total area (approx.): 122.0 sq. m (1313.0 sq. ft)
(Excluding Eaves)